

Exterior decorative luminaire.

Luminaire characteristics:

MODEL	POWER (W)	OPTIC	LUMENS (lm)*	EFFICACY (lm/W)*	MAX CANDELA (cd)*
ITYPH-S	2W	Diffusing light	47.5	24	44
ITYPH-K					

*For 3000K, 80CRI

Source:

White LED
2700K: 80CRI,
3000K: 80CRI,
3500K: 80CRI,
4000K: 80CRI.

Lumen maintenance:

80% of initial lumens at 50 000 hours (L80 B10)
T77°F (25°C)
80% of initial lumens at 40 000 hours (L80 B10)
T104°F (40°C) (LM-80)

Optics:

Diffusing light.

Material:

Body: UV resistant polycarbonate tubular diffuser with internal PMMA optic
Base: stainless steel
Spike: thermoplastic

Mounting:

Base mounted.
To be installed in a 1 5/16" (23mm) hole in any rigid material up to 3/16" (5mm) thick. Suitable for both ceiling and ground surfaces, indoors or outdoors. An optional mounting base is available for ground surface installation only (see installation accessories).
Spike mounted.
Landscape installation with garden spike.

Electrical:

See remote power supply options on page 5.
Requirement for one (1) fixture: 1.6W, 500mA.

Dimming:

Leading (Triac) and trailing edge (ELV) (120V), down to 10%. 0-10V (120-277V), down to 0.1%.
See dimmable remote options. on page 5.

Finish:

Standard finish



Stainless steel.
The spike-mounted version as a black wet location junction box and black spike.

Weight:

Typha surface: 2.24lb (1.01kg)
Typha spike: 2.59lb (1.17kg)

Warranty:

5 year limited warranty.

Ratings:

Typha surface: IP66, IK07
Typha spike: IP67, IK07


Certification:



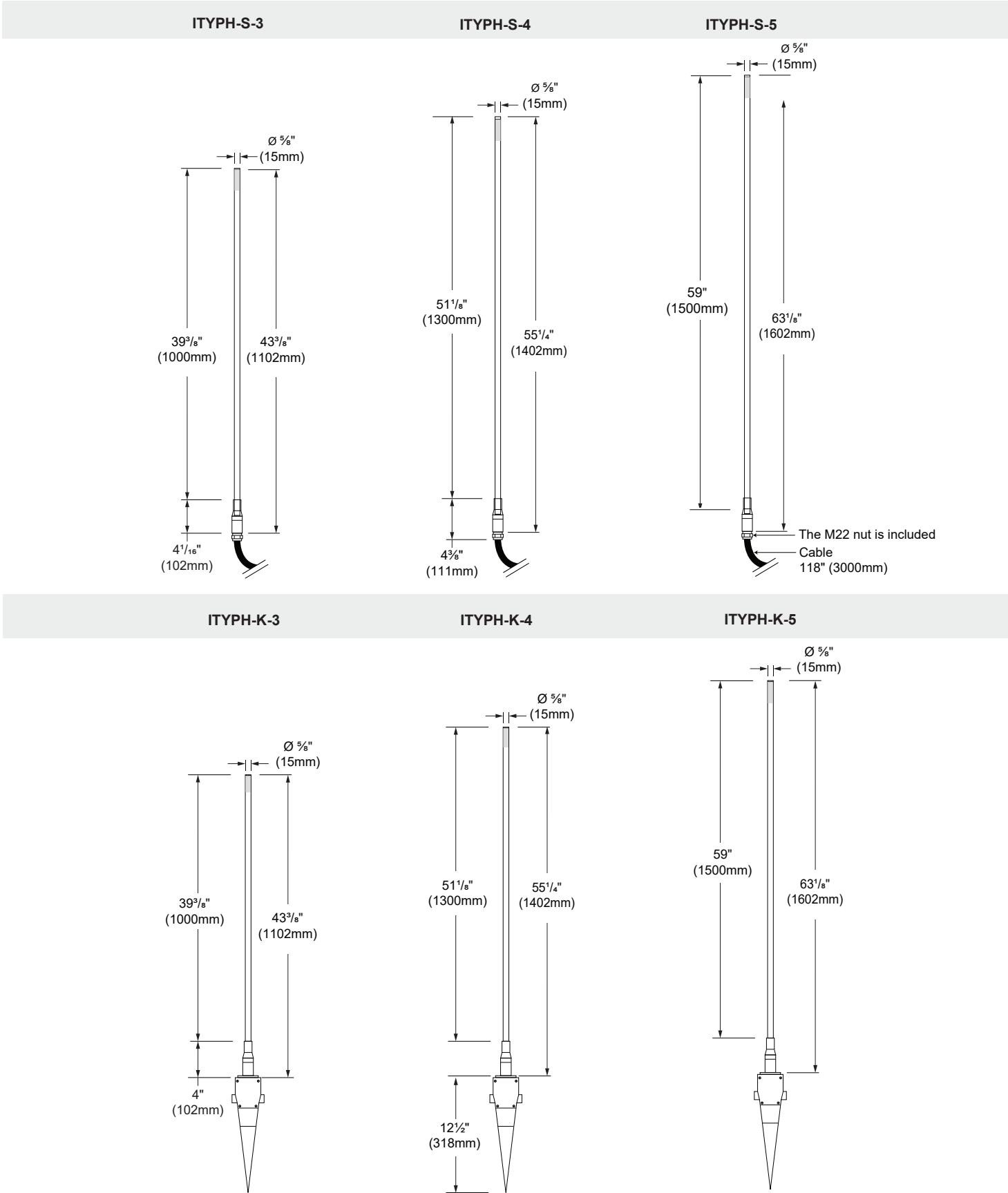
cULus listed

ORDERING INFO



PRODUCT CODE					
MODEL	MOUNTING	SIZE	LED	VOLTAGE	FINISH
ITYPH Typha	S Surface	3 3.28' (1000mm)	827 2700K 80CRI	REM Remote	13 Stainless steel 
	K Spike	4 4.26' (1300mm)	830 3000K 80CRI		
		5 4.92' (1500mm)	835 3500K 80CRI		
			840 4000K 80CRI		

DIMENSIONS



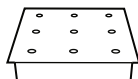
BASE MOUNTED INSTALLATION

(TO BE ORDERED SEPARATELY)

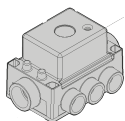
For available configurations and details on installation, consult the instruction sheet.

Typha can be installed individually or in a cluster configuration. The base can accommodate up to 9 Typha elements and is powered by a remote power supply (to be ordered separately). It can be fastened to hard surfaces such as stone, wood or simply buried into the ground.

- ☐ **IT415-13** Multiple support base.
Max 9 fixtures.
For ground only.
Dim: 19 $\frac{3}{4}$ "x19 $\frac{3}{4}$ "x5"
(500x500x126mm)
Stainless steel.

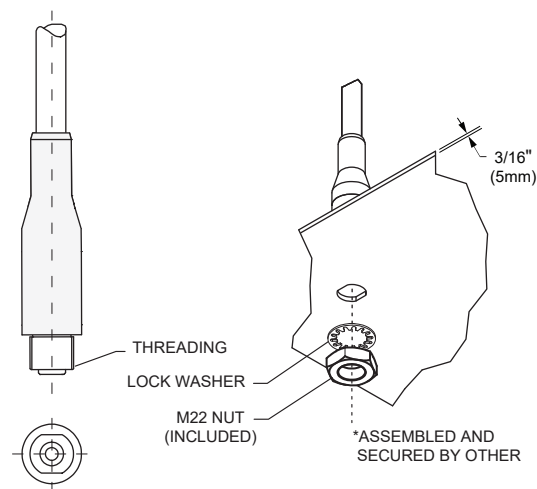


- ☐ **IB915-02** 3 fixture serial IP68 connection box.
Dim: 5 $\frac{3}{16}$ "x3 $\frac{1}{4}$ "x2 $\frac{3}{4}$ "
(135x82x70mm).
Black plastic.

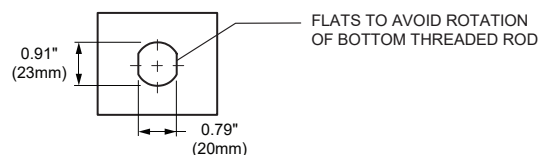


ALTERNATE BASE MOUNTED INSTALLATION

Typha can also be mounted into any hard material up to $\frac{3}{16}$ " (5mm) thick. M22 stainless steel nut and lock washer included. Comes with 118" (3000mm) of cable. For ceiling or floor.



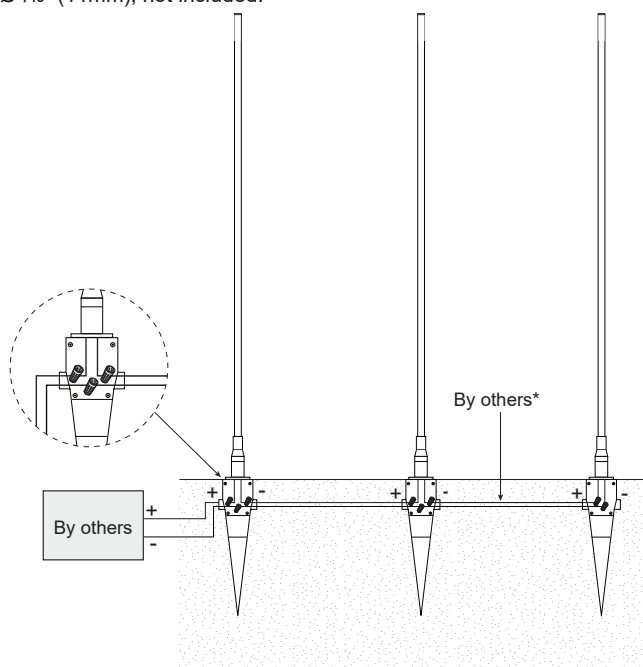
CUT OUT



SPIKE MOUNTED INSTALLATION

Typha settles directly into the soil and connects in series.

*Cable type: Outdoor burial type 2/18AWG Ø $\frac{1}{4}$ " (6mm) to Ø $\frac{7}{16}$ " (11mm), not included.

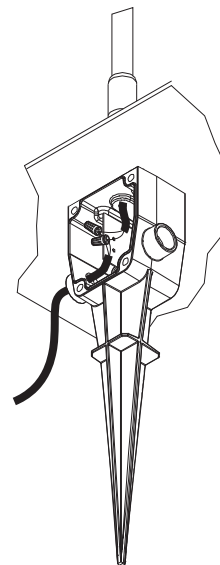


SPIKE MOUNTED CONNECTIONS

The cables enter through the holes of the fixture's junction box, and the connection is made inside.

Cable grippers included.

For use with cable type 2/18AWG Ø $\frac{1}{4}$ " (6mm) to $\frac{7}{16}$ " (11mm).



REMOTE LED DRIVER OPTIONS (TO BE ORDERED SEPARATELY)

OUTDOOR RATED Driver box model	Max distance*	Min-max units
		Requirement per fixture 1.6W, 3.2V, 500mA
4548-0500-006-UNV-ND	100ft (30m)	2 - 4
4548-0500-020-UNV-ND	240ft (73m)	5 - 12
4549-0500-027-UNV-SD10	300ft (91m)	1 - 15
4549-0500-050-UNV-SD10 (2 OUTPUT)		1-28, 14/OUTPUT
4549-0500-100-UNV-SD10 (4 OUTPUT)		1-56, 14/OUTPUT
4548-0500-025-120-LTE	175ft (53m)	5 - 14

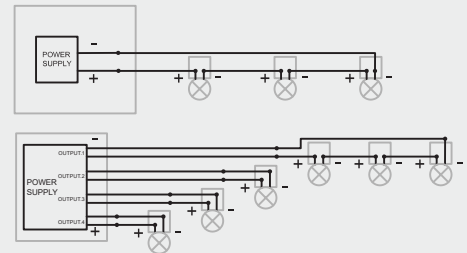
*Max distance cable calculated for 2V drop with 18AWG cable.
Contact customer service for longer remote distance.

DRIVER BOX MODEL DESCRIPTION

MODEL	CONSTANT CURRENT	WATTAGE	VOLTAGE	DIMMING PROTOCOL
4548 6" x 4.5 x 3" (152 x 114 x 76mm)	0500 500mA	006 to 100 6W to 100W	UNV 120-277V	ND No dimming
4549 14" x 5" x 3" (356 x 127 x 76mm)				SD10 0-10V ELDOLEDSOLOdrive (down to 0.1%) LTE Leading edge and trailing edge (ELV and TRIAC) (down to 10%)

WIRING DIAGRAMS

Multiple luminaires must be connected in series

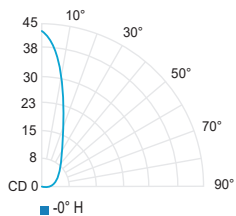


PHOTOMETRIC DATA

CCT (K)	CRI	TOTAL POWER* (W)	OPTIC	LUMENS (lm)	EFFICACY (lm / W)	MAX CANDELA (cd)	BUG	MODEL
3000K	80	2W	Diffusing light	47.5	24	44	B0 U2 G0	ITYPH-S
				47.5	24	44	B0 U2 G0	ITYPH-K

*Power can vary with the selected driver.

Diffusing light (3000K, 80CRI)



CCT options	2700K	3000K	3500K	4000K
CRI options	80CRI	80CRI	80CRI	80CRI
Multiplier	0.8	0.95	0.95	1

Use multiplier table for other CCT and CRI output data. Efficacy based on IESNA LM-79 test reports.