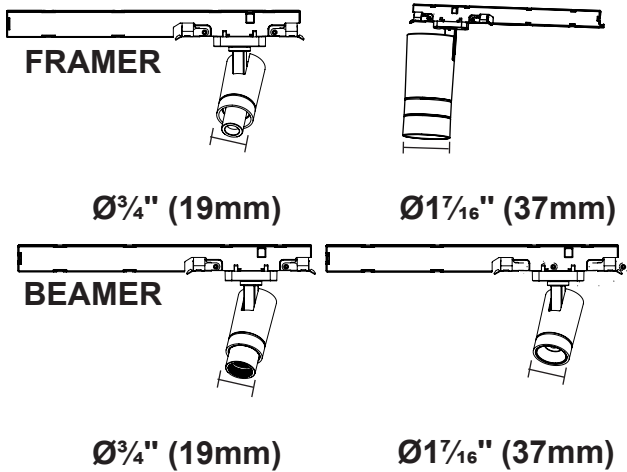
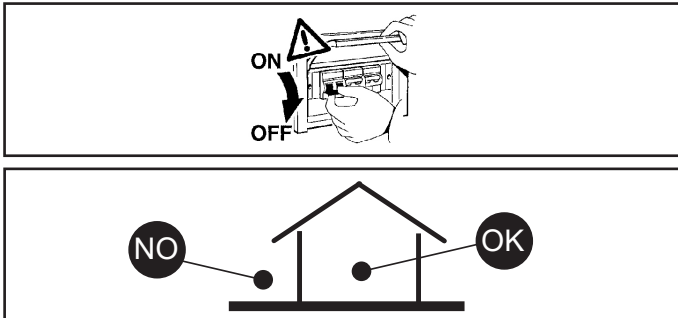


PALCO FOR FILORAIL 48V



- FR Attention:**
La sécurité de l'appareil n'est garantie qu'en cas d'utilisation correcte des instructions suivantes; il faut par conséquent les conserver.
- EN Warning:**
The safety of this fixture is guaranteed only if you comply with these instructions; remember to conserve in a safe place.
- IT Attenzione:**
La sicurezza dell'apparecchio e' garantita solo con l'uso appropriato delle seguenti istruzioni; pertanto e' necessario conservarle.
- ES Atencion:**
La seguridad del aparato se garantiza solo cumpliendo cuidadosamente las siguientes instrucciones; por ello, es necesario conservarlas.

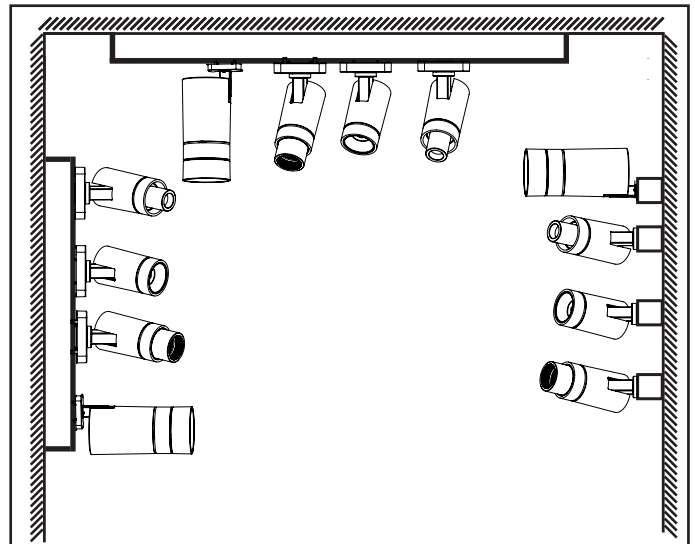


- FR N.B.:** Lors de l'installation du système veuillez respecter rigoureusement les normes en vigueur en la matière.
- EN N.B.:** When installing the system, strictly comply with all regulations on installation in force.
- IT N.B.:** Durante l'installazione del sistema rispettare scrupolosamente le norme impiantistiche vigenti.
- ES N.B.:** Durante la instalación del sistema respetar e scrupolosamente las normas de instalación vigentes.

- FR** LISEZ TOUTES CES INSTRUCTIONS D'INSTALLATION AVANT D'INSTALLER LE SYSTÈME DE RAIL ; CONSERVEZ CES INSTRUCTIONS ET RÉFÉREZ-VOUS À ELLES LORSQUE DES AJOUTS OU DES MODIFICATIONS SONT APPORTÉS À LA CONFIGURATION DU RAIL.
- EN** READ ALL OF THESE INSTALLATION INSTRUCTIONS BEFORE INSTALLING THE TRACK SYSTEM; SAVE THESE INSTRUCTIONS AND REFER TO THEM WHEN ADDITIONS TO OR CHANGES IN THE TRACK CONFIGURATION ARE MADE.
- IT** LEGGERE TUTTE LE PRESENTI ISTRUZIONI DI INSTALLAZIONE PRIMA DI INSTALLARE IL SISTEMA DI BINARI; CONSERVARE QUESTE ISTRUZIONI E FARVI CONSULTO QUANDO SI APPORTANO AGGIUNTE O MODIFICHE ALLA CONFIGURAZIONE DEI BINARI.
- ES** LEA TODAS ESTAS INSTRUCCIONES DE INSTALACIÓN ANTES DE INSTALAR EL SISTEMA DE RIELES; GUARDE ESTAS INSTRUCCIONES Y CONSÚSELAS CUANDO SE REALICEN ADICIONES O CAMBIOS EN LA CONFIGURACIÓN DE LOS RIELES.

- FR** Le fonctionnement des produits n'est garanti qu'en cas d'utilisation de rails et accessoires iGuzzini
- EN** Correct product operation is only guaranteed if iGuzzini tracks and accessories are used.
- IT** IT funzionamento dei prodotti è garantito solo con l'utilizzo di binari ed accessori iGuzzini
- ES** El funcionamiento de los productos se garantiza solamente si se utilizan ralles y accesorios iGuzzini.

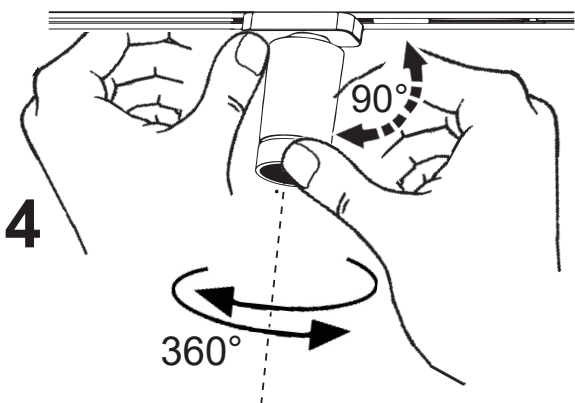
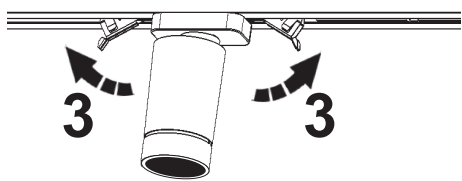
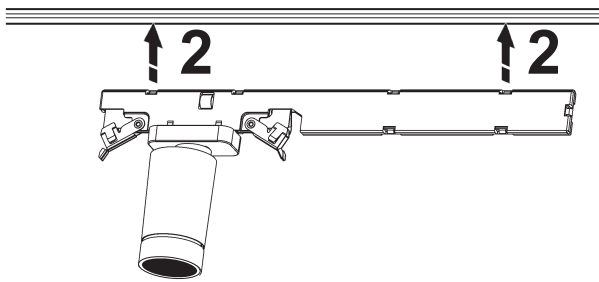
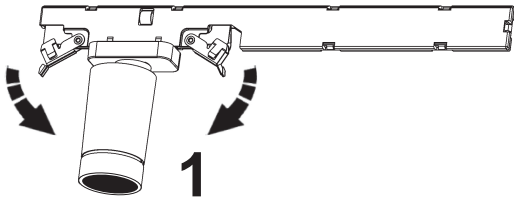
OPTIC	
BEAMER	Ø3/4" 19mm
FRAMER	Ø3/4" 19mm
SPOT	Ø3/4" -19mm Ø1 7/16" -37mm
MEDIUM	Ø3/4" -19mm Ø1 7/16" -37mm
WIDE FLOOD	Ø1 7/16" -37mm



- FR** Pour les positions d'installation, se conformer aux positions illustrées ; contacter la société iGuzzini en cas de nécessité.
- EN** All installation positions must comply with those illustrated. In the event of any doubt, contact iGuzzini.
- IT** Per le posizioni di installazione, attenersi a quelle illustrate, eventualmente contattare la iGuzzini.
- ES** Respetar las posiciones de instalación ilustradas y, en caso de duda, contactar con iGuzzini.

INSTALLATION

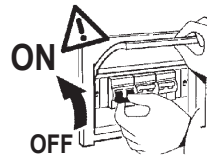
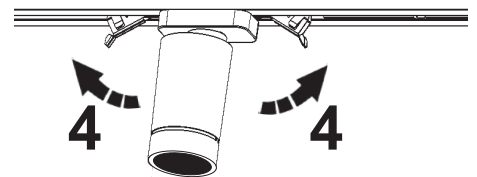
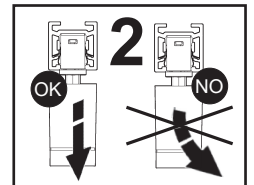
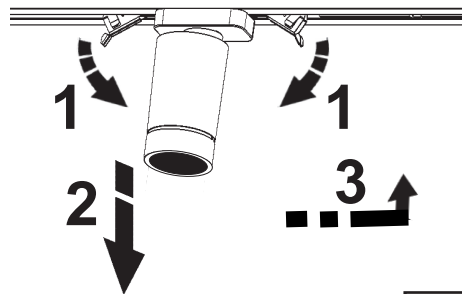
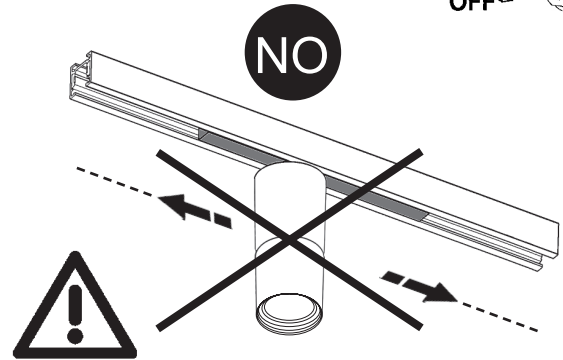
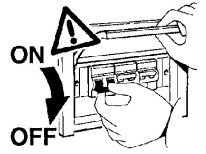
IPLC-FR-19-SP
IPLC-FR-19-MD



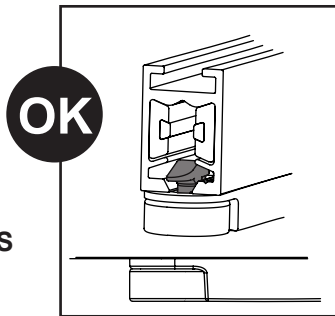
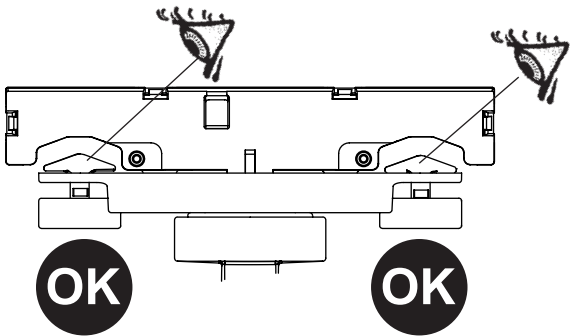
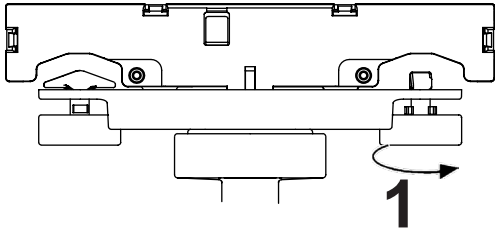
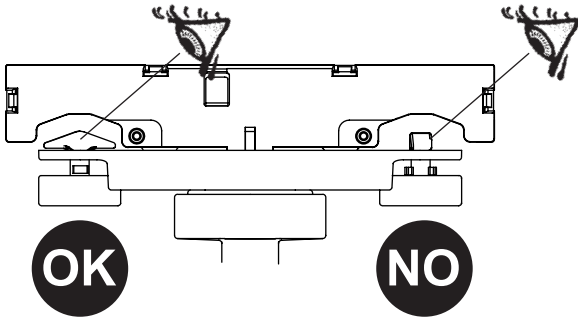
- FR Maintenir l'adaptateur bloqué sur le rail pendant l'orientation
- EN Keep the adapter locked on the track during positioning
- IT Tenere l'adattatore bloccato sul binario durante l'orientamento.
- ES Mantener el adaptador bloqueado en el rail durante la orientación.

CHANGE POSITION

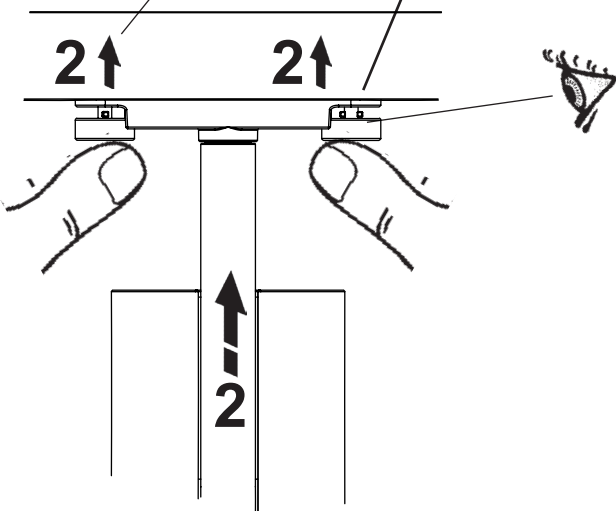
IPLC-FR-19-SP
IPLC-FR-19-MD



IPLC-FR-19-SP
IPLC-FR-19-MD



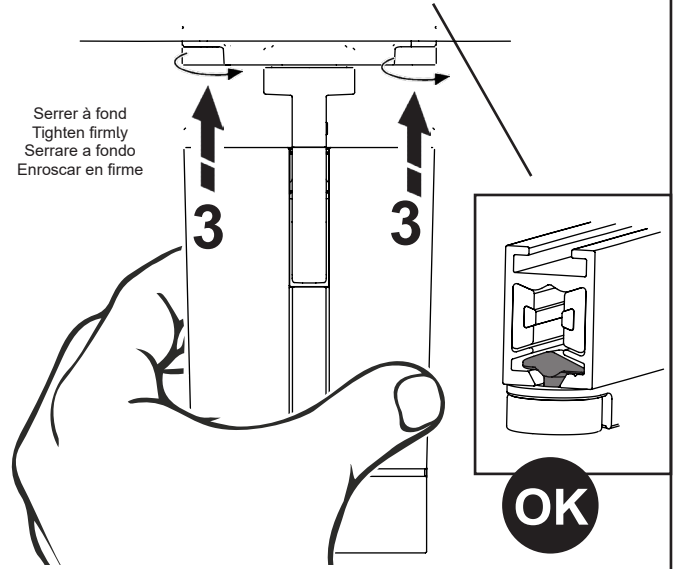
FILORAIL TRACKS



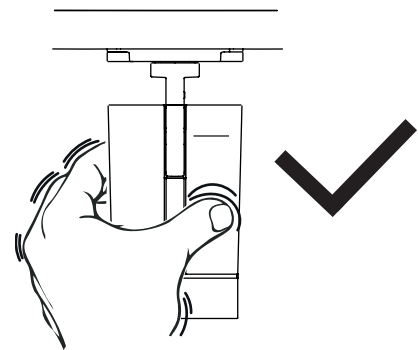
FILORAIL TRACKS

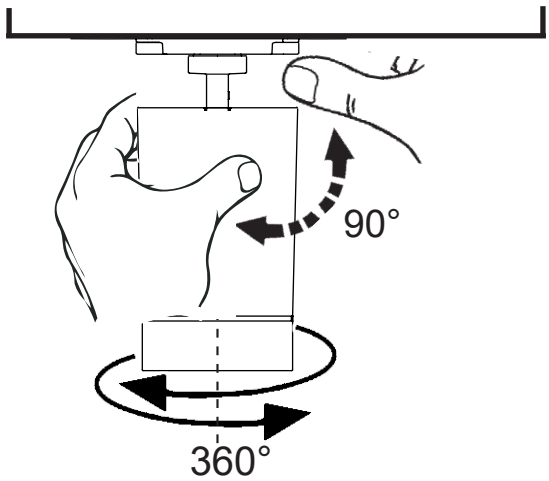


Serrer à fond
Tighten firmly
Serrare a fondo
Enroscar en firme



CHECK THE FIXING

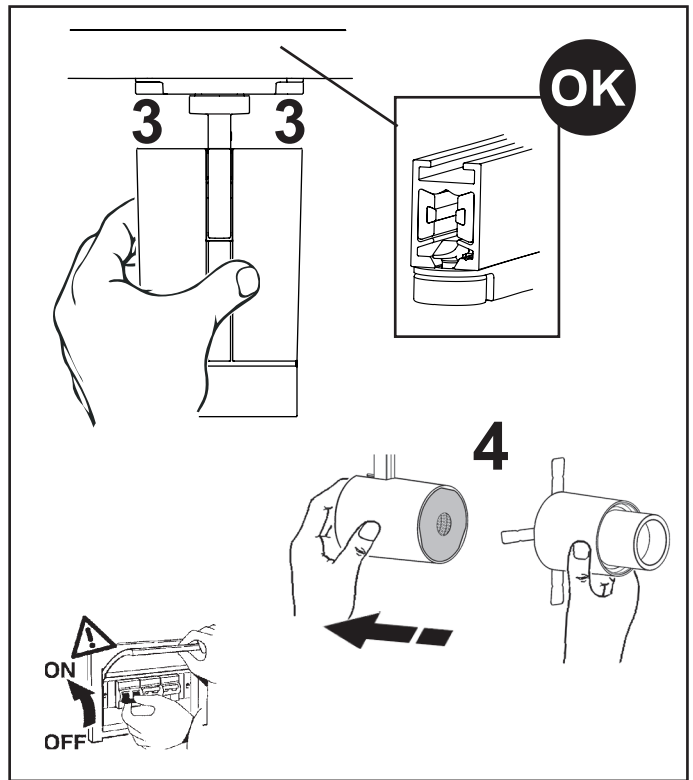
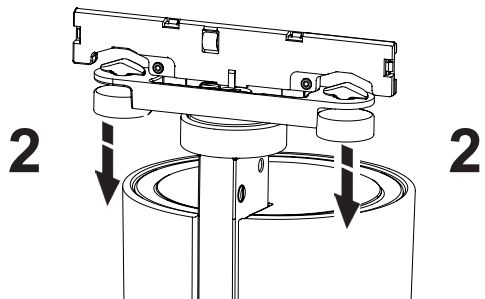
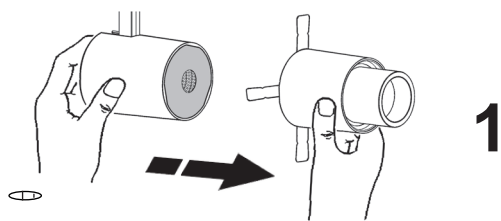
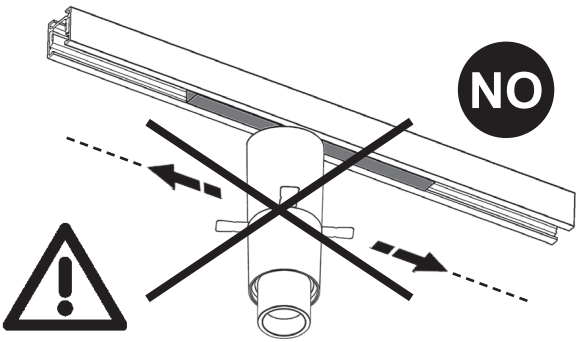
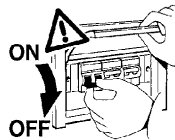




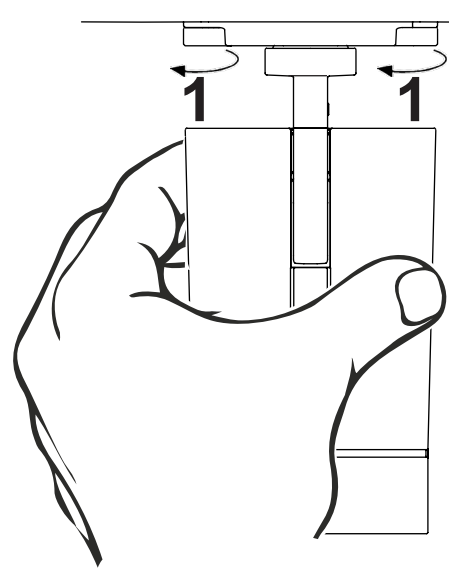
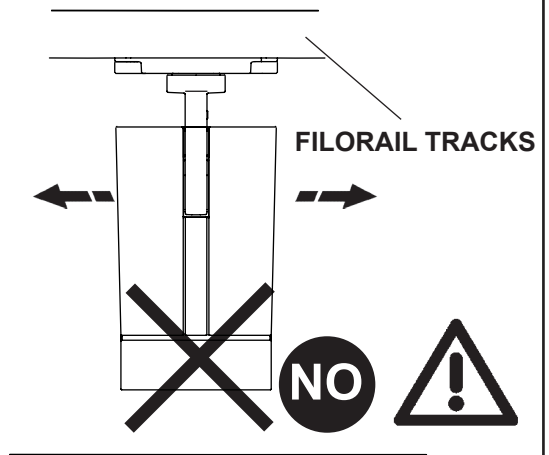
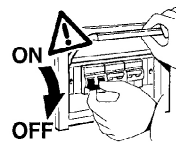
FR Maintenir l'adaptateur bloqué sur le rail pendant l'orientation
 EN Keep the adapter locked on the track during positioning
 IT Tenere l'adattatore bloccato sul binario durante l'orientamento.
 ES Mantener el adaptador bloqueado en el rail durante la orientación.

CHANGE POSITION

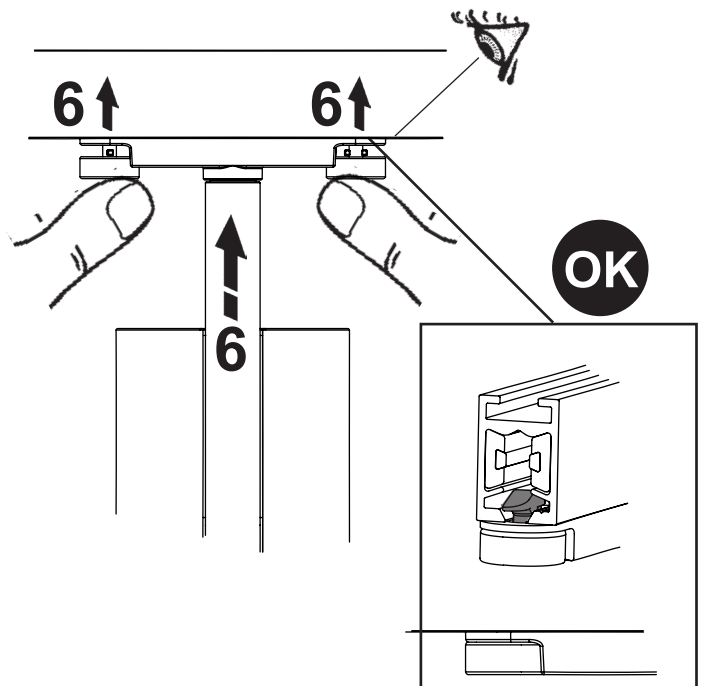
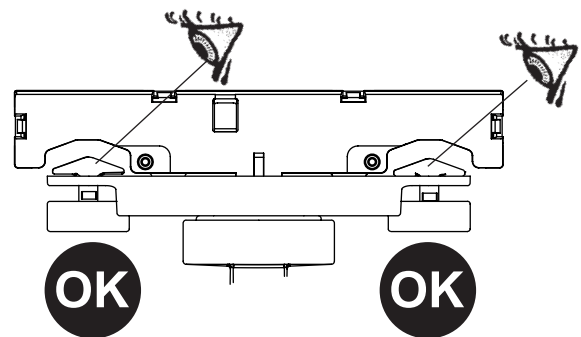
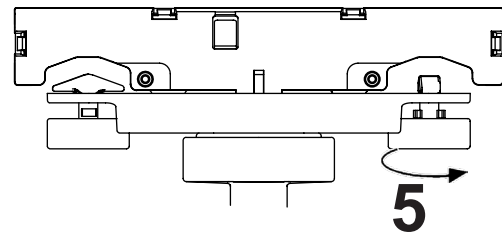
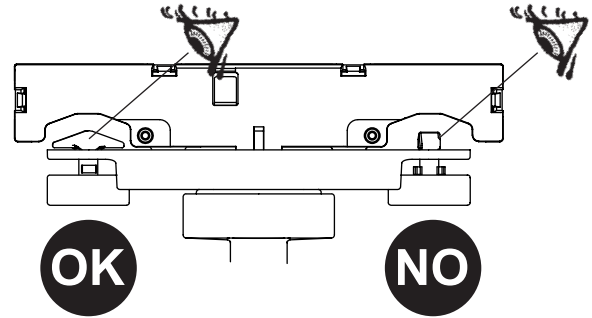
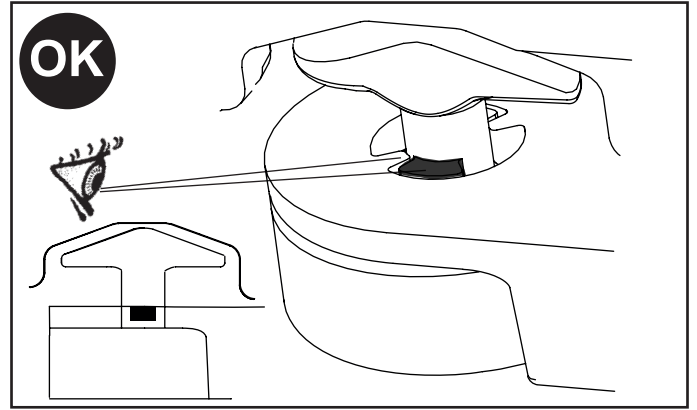
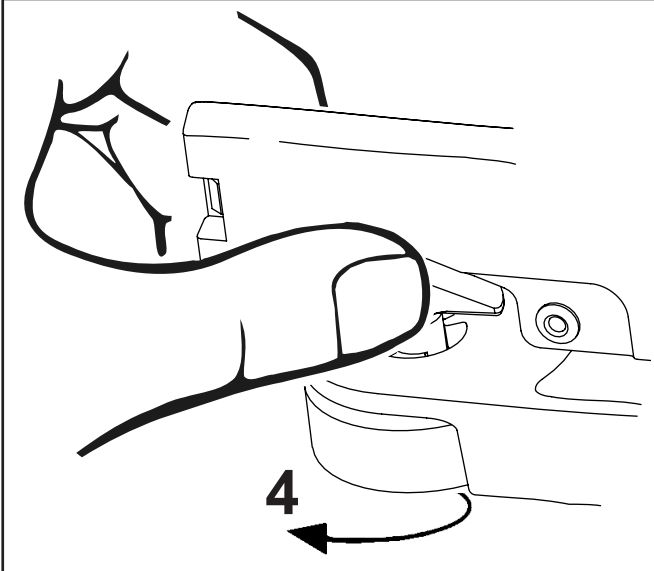
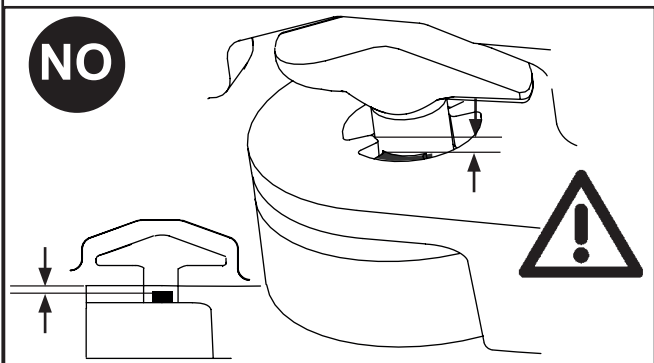
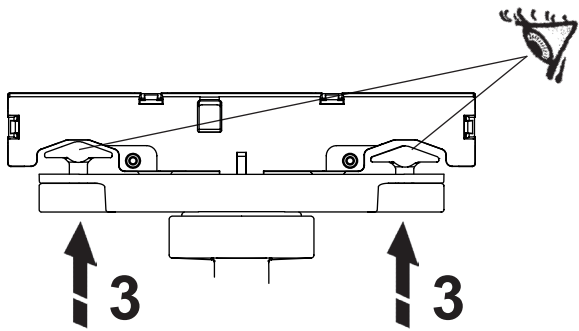
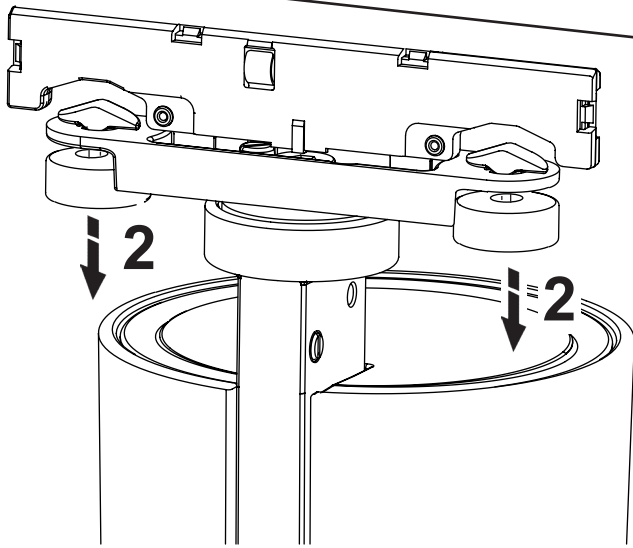
IPLC-FR-19-FR



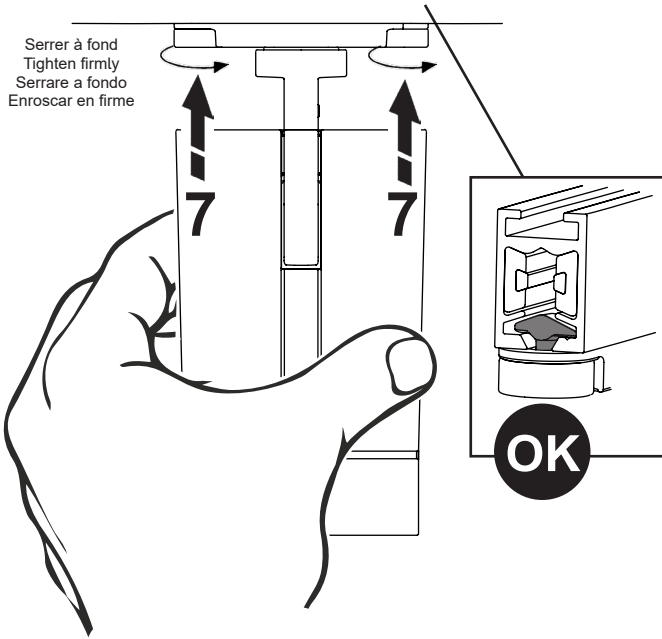
IPLC-FR-19-BE



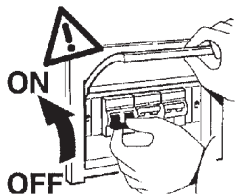
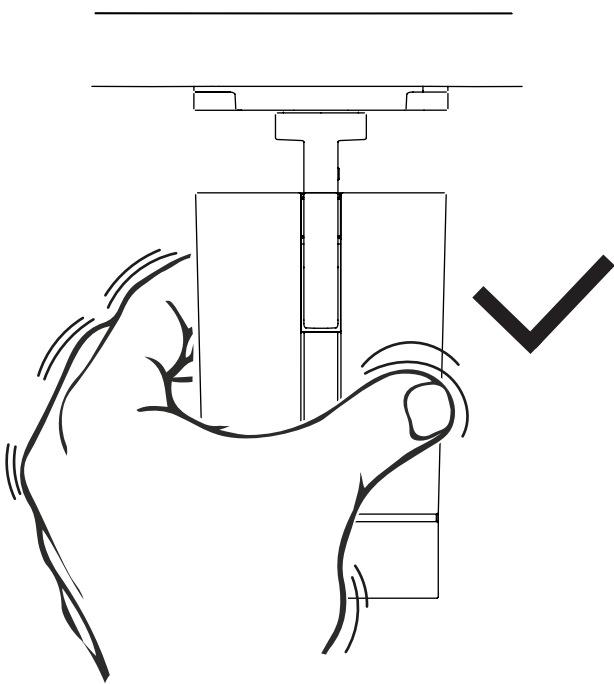
FILORAIL TRACKS



Serrer à fond
Tighten firmly
Serrare a fondo
Enroscar en firme

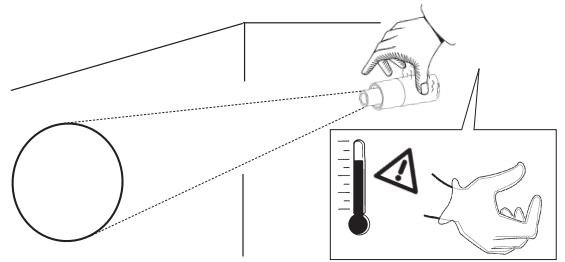


CHECK THE FIXING

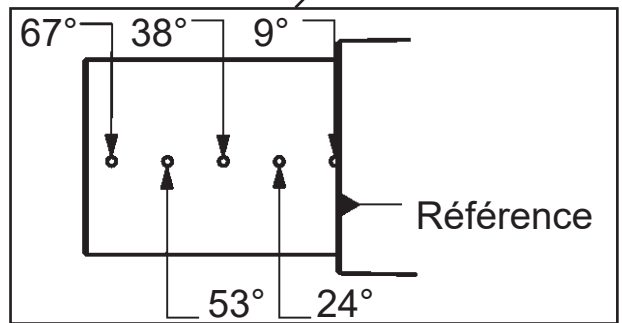
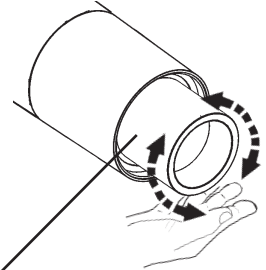


FR À installer uniquement en dehors du volume d'accessibilité
EN To be installed only outside the accessible space
IT Da installare solo al di fuori del volume di accessibilità
ES Para instalar sólo fuera del volumen de accesibilidad

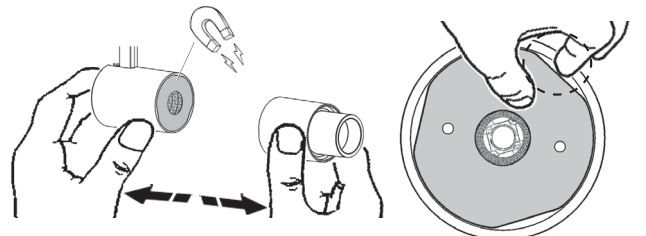
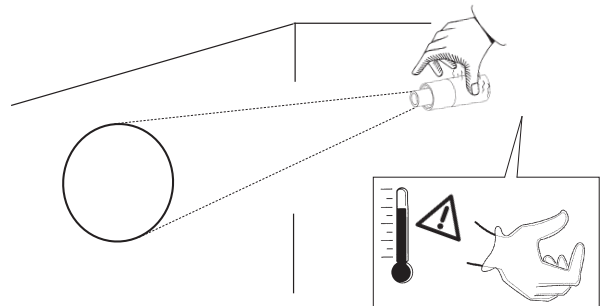
ORIENTATION DU GOBO - AIMING A GOBO PUNTAMENTO GOBO - ENFOQUE GOBO

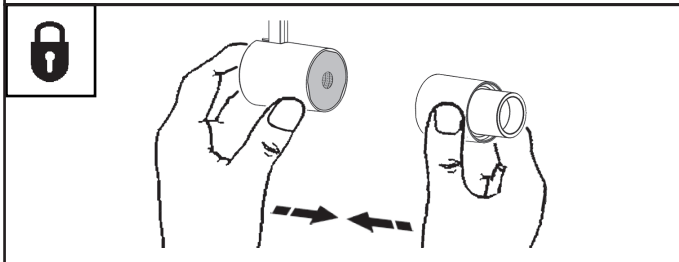
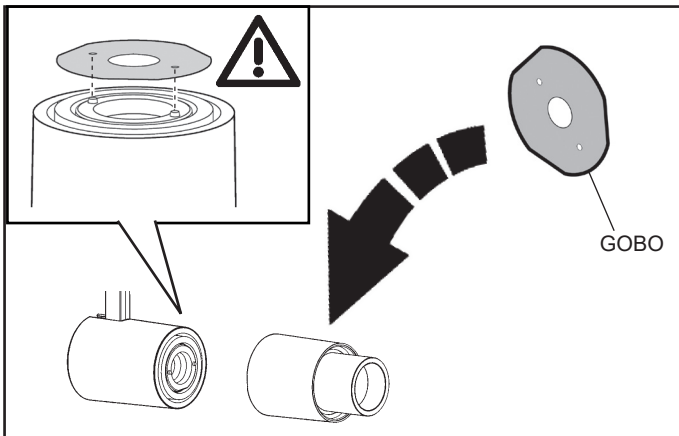


RÉGLAGE DE LA FOCALISATION
FOCUSING ADJUSTMENT
REGOLAZIONE DEL FOCUSING
REGULACIÓN DEL ENFOQUE



FR Effectuer la mise au point 30 minutes après avoir allumé le produit.
EN Carry out aiming 30 minutes after product power up.
IT Eseguire il puntamento dopo 30 minuti dall'accensione del prodotto.
ES Orientar a los 30 minutos de haber encendido la luminaria.



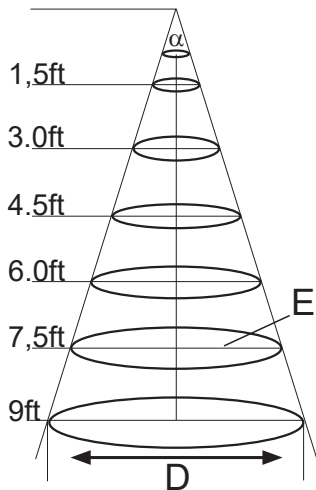


GOBO Ø1/16" - 2mm		
α=9°		
E (fcd) 3000K CRI90	D (ft)	
1.5ft	90.6	0.2
3.0ft	22.7	0.4
4.5ft	10.1	0.7
6.0ft	5.67	0.9
7.5ft	3.36	1.1
9.0ft	2.52	1.3

GOBO Ø3/16" - 4mm		
α=17°		
E (fcd) 3000K CRI90	D (ft)	
1.5ft	100	0.4
3.0ft	25	0.9
4.5ft	11.1	1.3
6.0ft	6.26	1.7
7.5ft	4.01	2.2
9.0ft	2.78	2.6

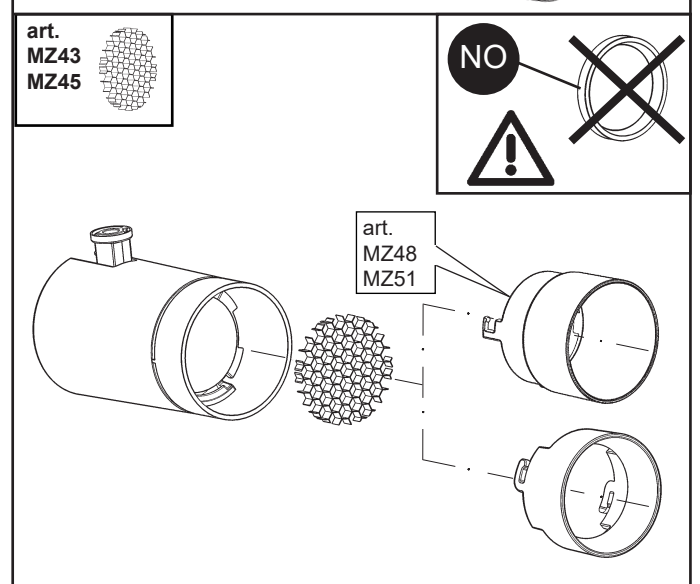
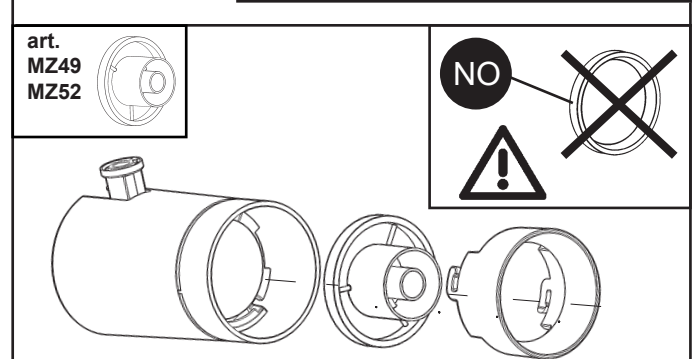
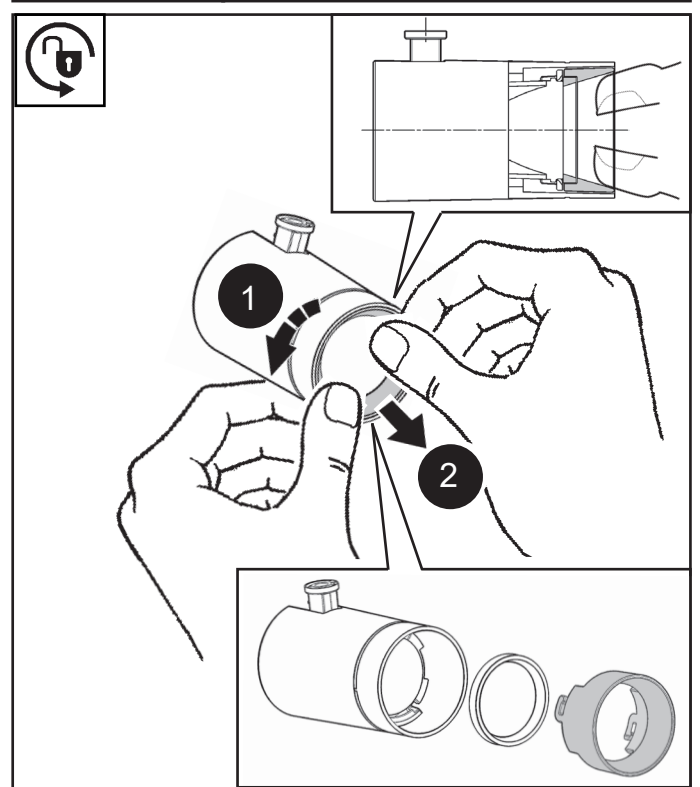
GOBO Ø1/8" - 3mm		
α=13°		
E (fcd) 3000K CRI90	D (ft)	
1.5ft	85.8	0.3
3.0ft	21.5	0.7
4.5ft	9.53	1.0
6.0ft	5.36	1.30
7.5ft	3.43	1.6
9.0ft	2.83	2.0

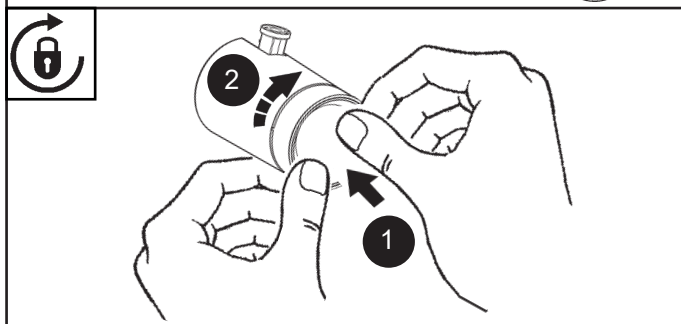
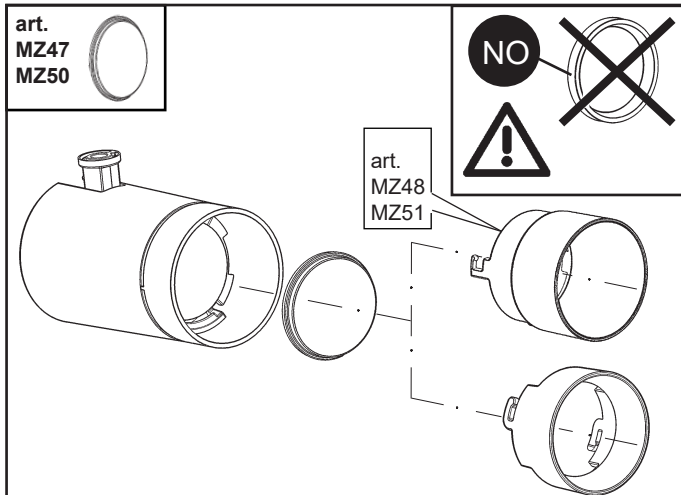
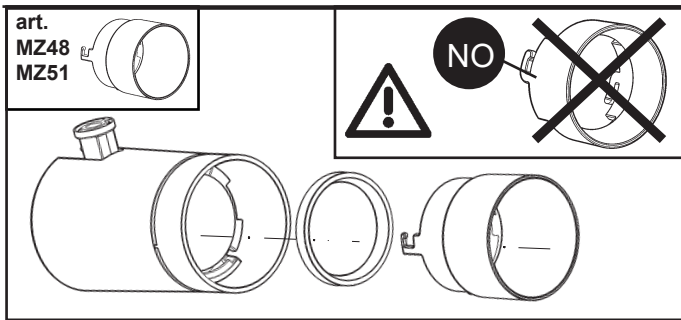
GOBO Ø3/16" - 5mm		
α=22°		
E (fcd) 3000K CRI90	D (ft)	
1.5ft	101	0.5
3.0ft	25.4	0.9
4.5ft	11.3	1.4
6.0ft	6.34	1.8
7.5ft	4.06	2.3
9.0ft	2.82	2.8



CCT options	2700K	3000K	3500K	4000K
CRI options	90CRI	90CRI	90CRI	90CRI
Multiplier	0.95	1.00	0.95	1.21

+ Art.											
PRODUCT	SPOT		MEDIUM		WIDE		FLOOD				
	Ø	3/4" - 19mm	1 1/16" - 37mm	MZ49	MZ52	MZ48	MZ51	MZ43	MZ45	MZ47	MZ50





FR N.B.: Pour procéder au remplacement de la LED, adressez-vous à la société iGuzzini.

EN N.B.: For information on LED replacement please contact iGuzzini.

IT N.B.: Per la sostituzione del LED contattare l'azienda iGuzzini.

ES NOTA: Para sustituir el LED llame a la empresa iGuzzini.



FR En cas de cassure du verre, ne pas utiliser le produit et contacter aussitôt le fabricant pour son remplacement.

EN Should the glass break, the product cannot be used. Contact the manufacturer about its replacement.

IT In caso di rottura del vetro il prodotto non può essere utilizzato, contattare il costruttore per la sua sostituzione.

ES En caso de ruptura del cristal no utilizar el producto y contactar el fabricante para la sustitución.

