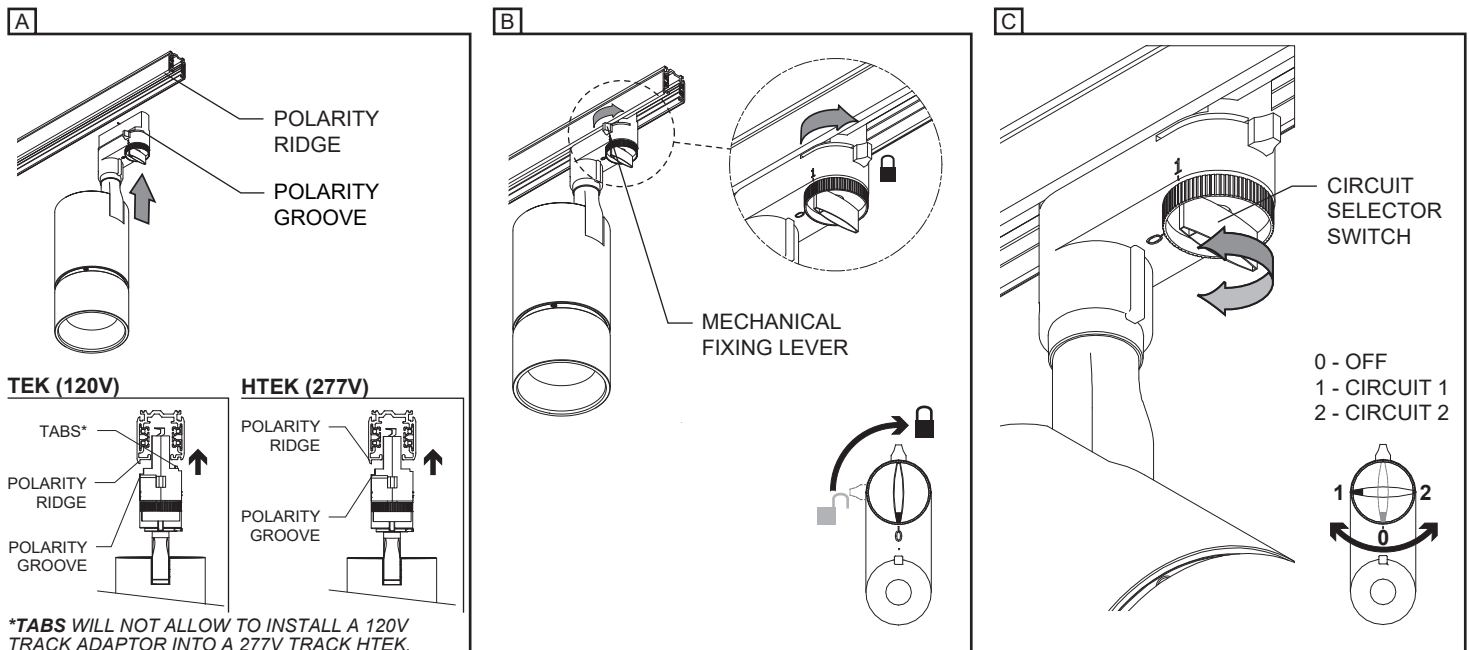


**IMPORTANT** - READ CAREFULLY BEFORE INSTALLING FIXTURE. RETAIN THESE INSTRUCTIONS FOR FUTURE REFERENCE.  
THIS PRODUCT MUST BE INSTALLED IN ACCORDANCE WITH THE NATIONAL ELECTRICAL CODE AND ALL APPLICABLE LOCAL CODES, BY A PERSON FAMILIAR WITH THE CONSTRUCTION AND OPERATION OF THE PRODUCT, AND THE HAZARDS INVOLVED. PROPER GROUNDING IS REQUIRED FOR SAFETY.

## INSTALLING PROJECTOR ON TWO CIRCUIT TRACK (120V OR 277V)

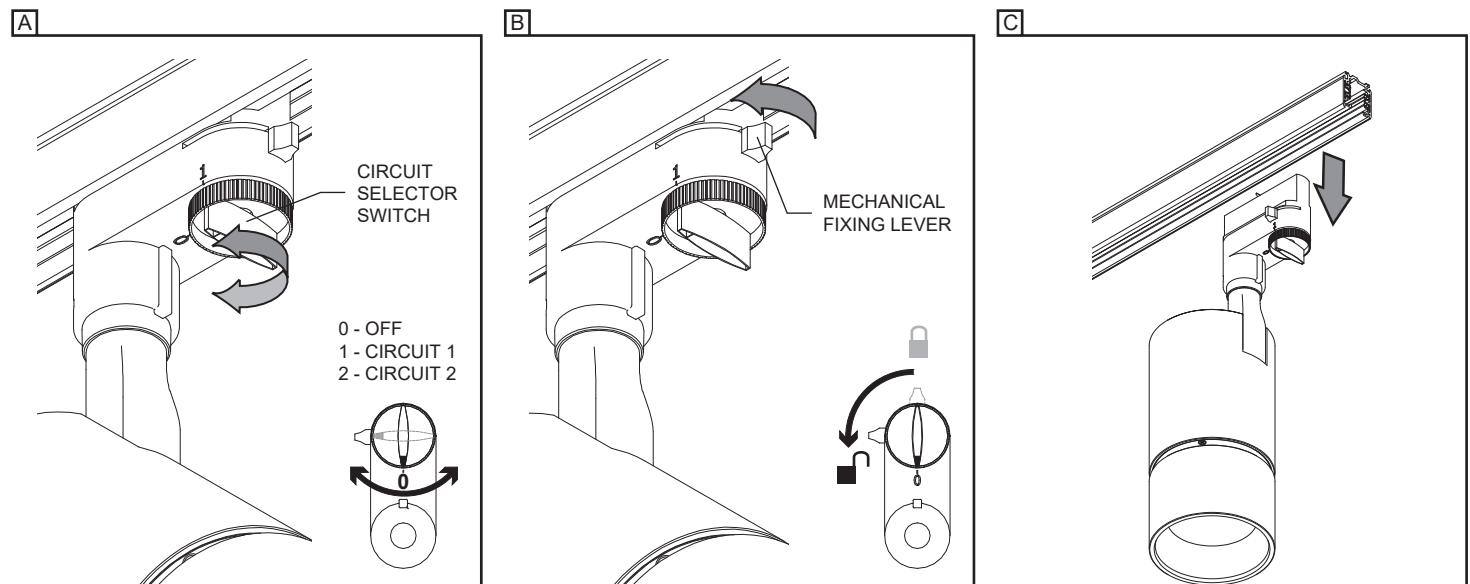
FOR USE WITH **TEK SERIES** (120V) TRACK SYSTEM - OR **HTEK SERIES** (277V) TRACK SYSTEM ONLY.

- A- INSERT THE PROJECTOR TRACK ADAPTOR WITH THE POLARITY GROOVE TOWARDS THE POLARITY RIDGE ON THE TRACK AND PUSH INTO THE TRACK UNTIL IT SNAPS INTO PLACE.  
B- TURN THE MECHANICAL FIXING LEVER TO LOCK THE PROJECTOR INTO THE TRACK.  
C- SELECT THE DESIRED CIRCUIT WITH THE CIRCUIT SELECTOR SWITCH.



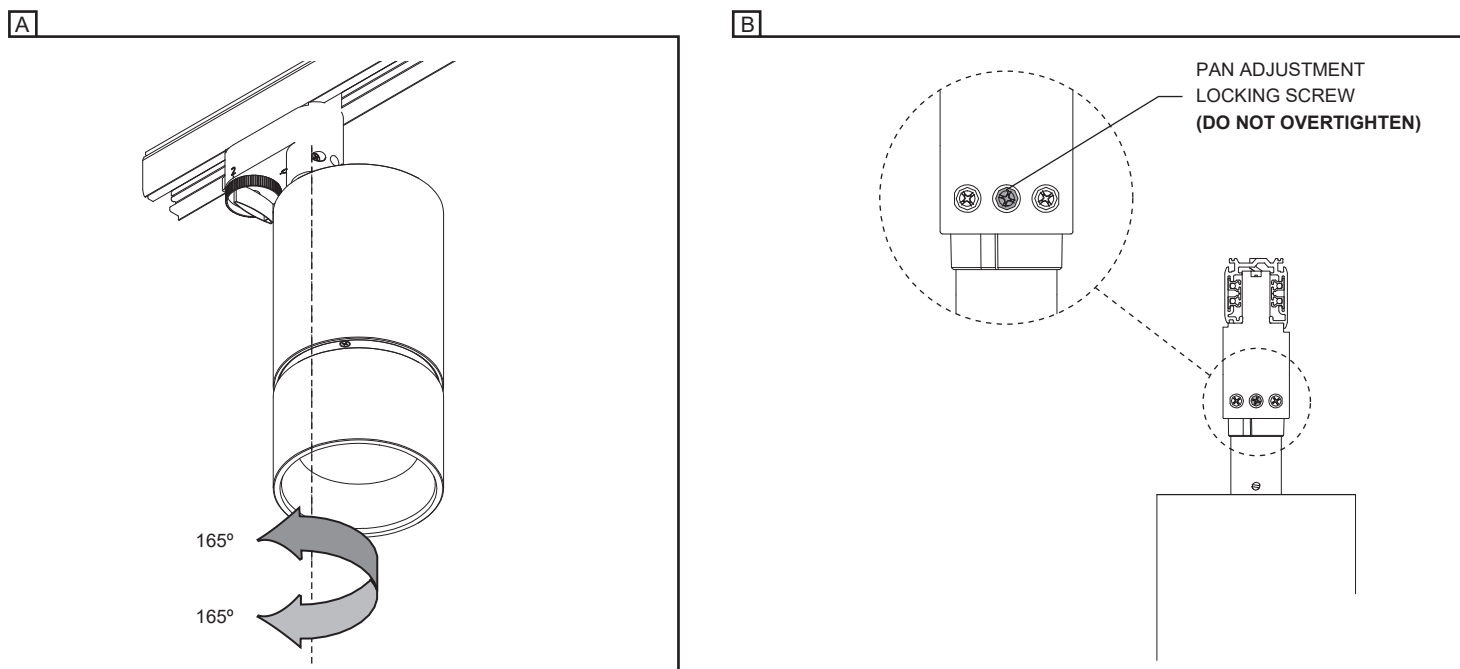
## REMOVING PROJECTOR FROM TRACK TEK / HTEK (1790)

- A- TO REMOVE THE PROJECTOR FROM TRACK, SELECT 0-POSITION (**OFF**) ON THE CIRCUIT SELECTOR SWITCH.  
B- TURN THE MECHANICAL FIXING LEVER AS SHOWN TO **UNLOCK** THE PROJECTOR FROM THE TRACK.  
C- PULL FIRST FROM THE FIXING LEVER END TO REMOVE THE PROJECTOR FROM THE TRACK.



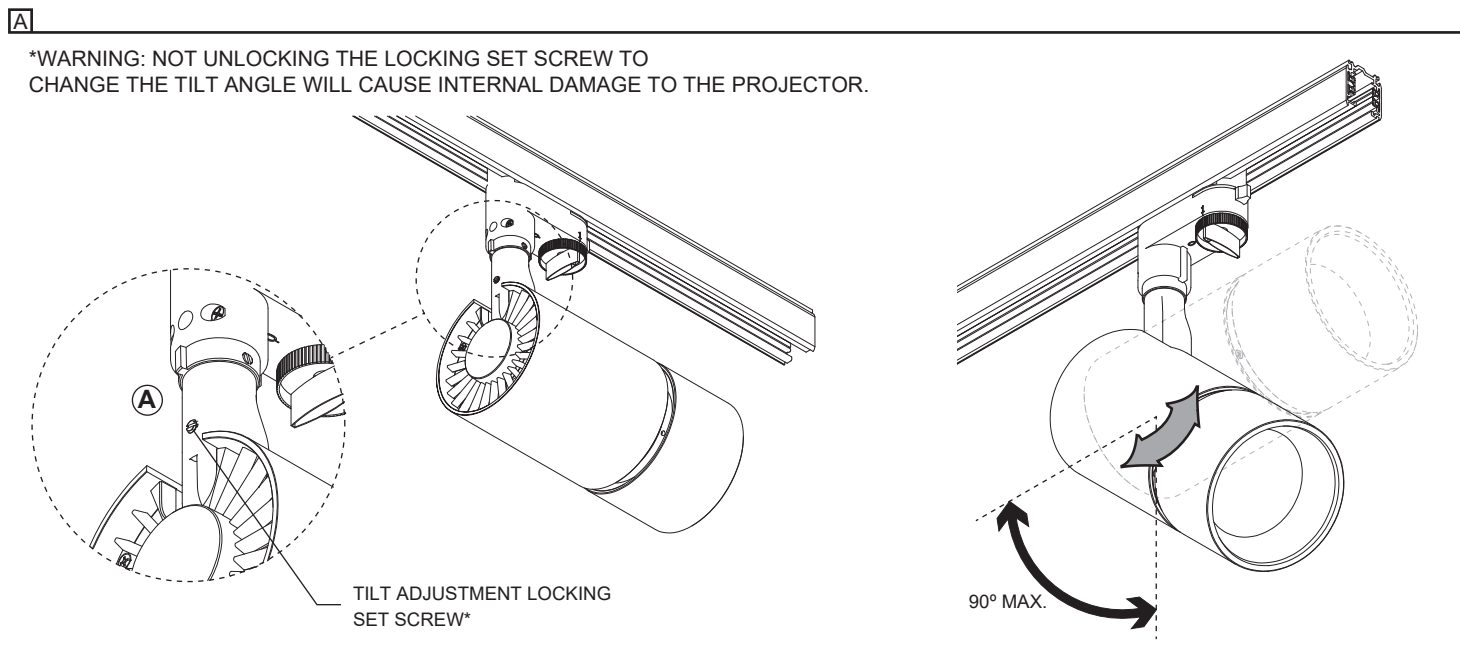
## PAN ANGLE POSITION (1790)

- A- ADJUST THE DESIRED PAN POSITION. (MAXIMUM OF 330° AXIAL ROTATION).  
B- LOCK THE POSITION WITH THE PAN ADJUSTMENT LOCKING SCREW.



## TILT ANGLE POSITION (1790)

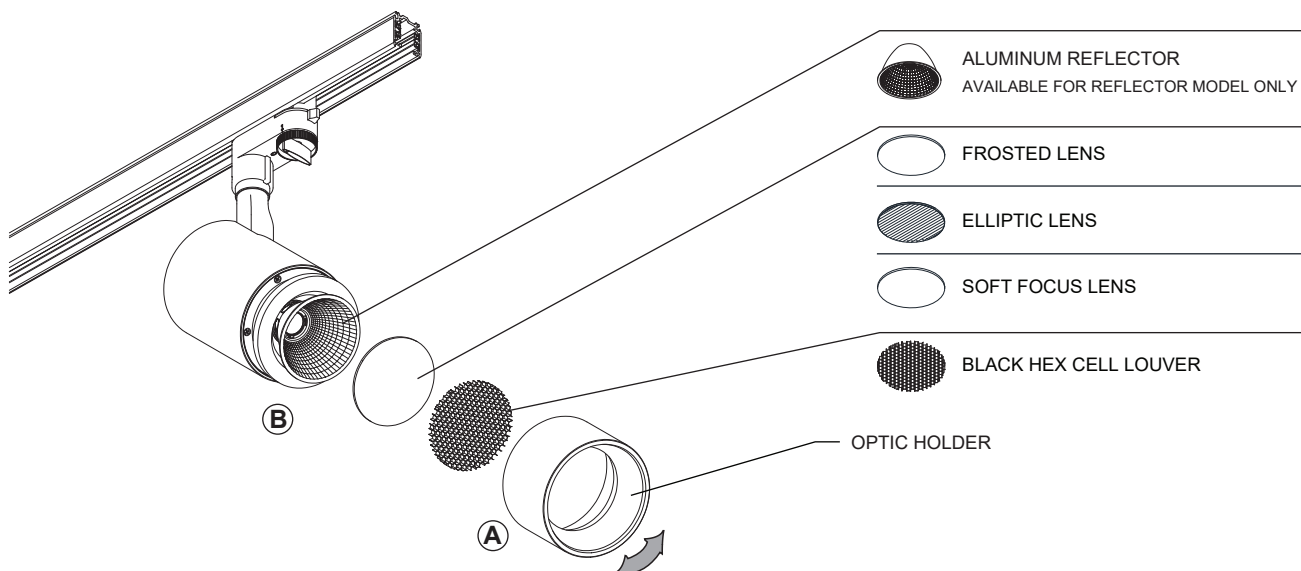
- A- ADJUST THE DESIRED POSITION AND LOCK WITH THE LOCKING SET SCREW USING A SLOT SCREW DRIVER.  
(MAXIMUM OF 90° AXIAL ROTATION)



## REPLACING OPTIC FOR REFLECTOR MODELS

- A- UNSCREW THE OPTIC HOLDER TO ACCESS THE REFLECTOR.  
B- REPLACE THE REFLECTOR AND RE-INSTALL THE OPTIC HOLDER BACK IN PLACE.

A + B



## ACCESSORIES

- A- UNSCREW THE OPTIC HOLDER  
B- PLACE ACCESSORY BETWEEN THE OPTIC HOLDER AND THE ACCESSORY HOLDER  
C- RE-INSTALL THE OPTIC HOLDER BACK IN PLACE.

A + B + C

