

TRIM / TRIMLESS MODEL : LOG3 - R/S- T/L - NC/RF

IMPORTANT - READ CAREFULLY BEFORE INSTALLING FIXTURE. RETAIN THESE INSTRUCTIONS FOR FUTURE REFERENCE.

THIS PRODUCT MUST BE INSTALLED IN ACCORDANCE WITH THE NATIONAL ELECTRICAL CODE AND ALL APPLICABLE LOCAL CODES, BY A PERSON FAMILIAR WITH THE CONSTRUCTION AND OPERATION OF THE PRODUCT, AND THE HAZARDS INVOLVED. PROPER GROUNDING IS REQUIRED FOR SAFETY.

⚠ DISCONNECT THE MAIN LINE BEFORE WIRING SECONDARY CONNECTORS.

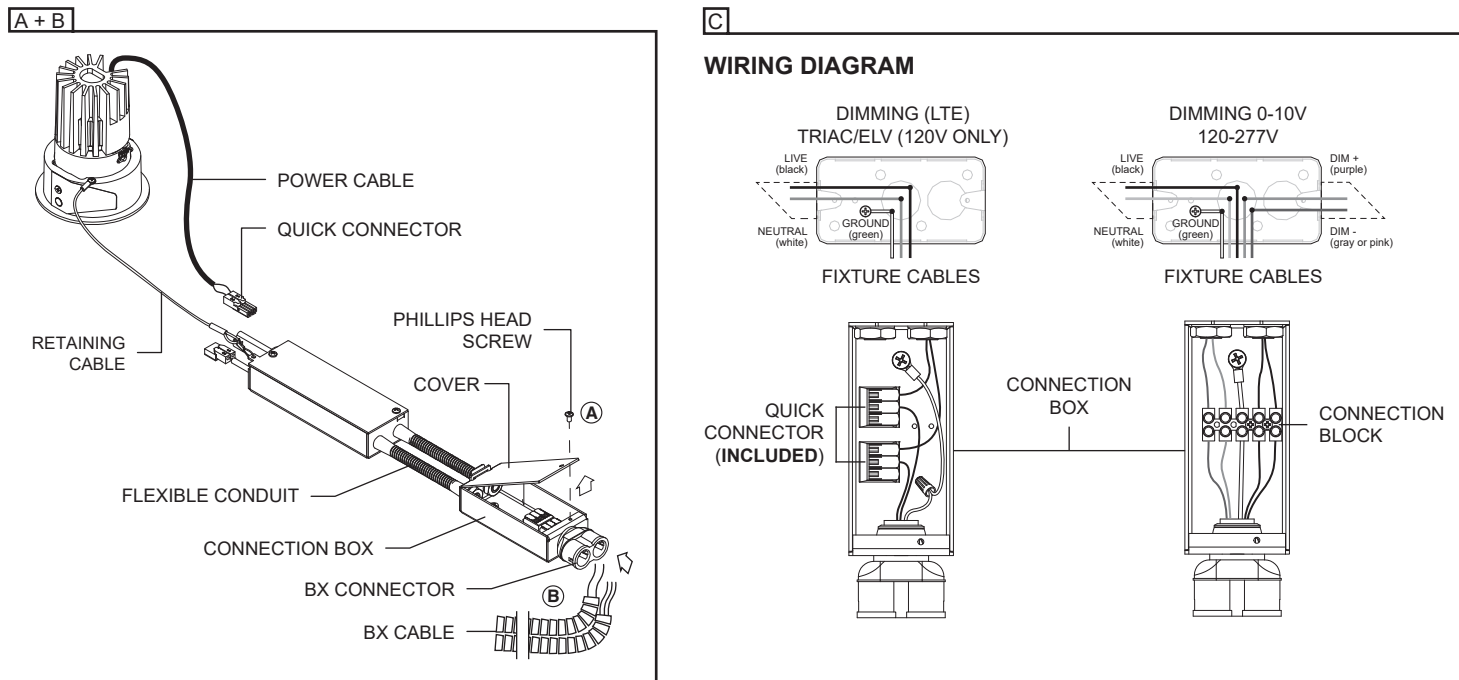
TRIM - NEW CONSTRUCTION WITH PLASTER FRAME (NC) / REMODEL (RF) INTEGRAL DRIVER (120 / 277V) DIMMING TRIAC/ELV - 0-10V

A- REMOVE THE PHILLIPS HEAD SCREW (INCLUDED) OF THE CONNECTION HOUSING AND REMOVE COVER.

B- INSTALL BX CABLES (BY OTHERS) WITH 6" OF WIRE IN THE CONNECTION BOX.

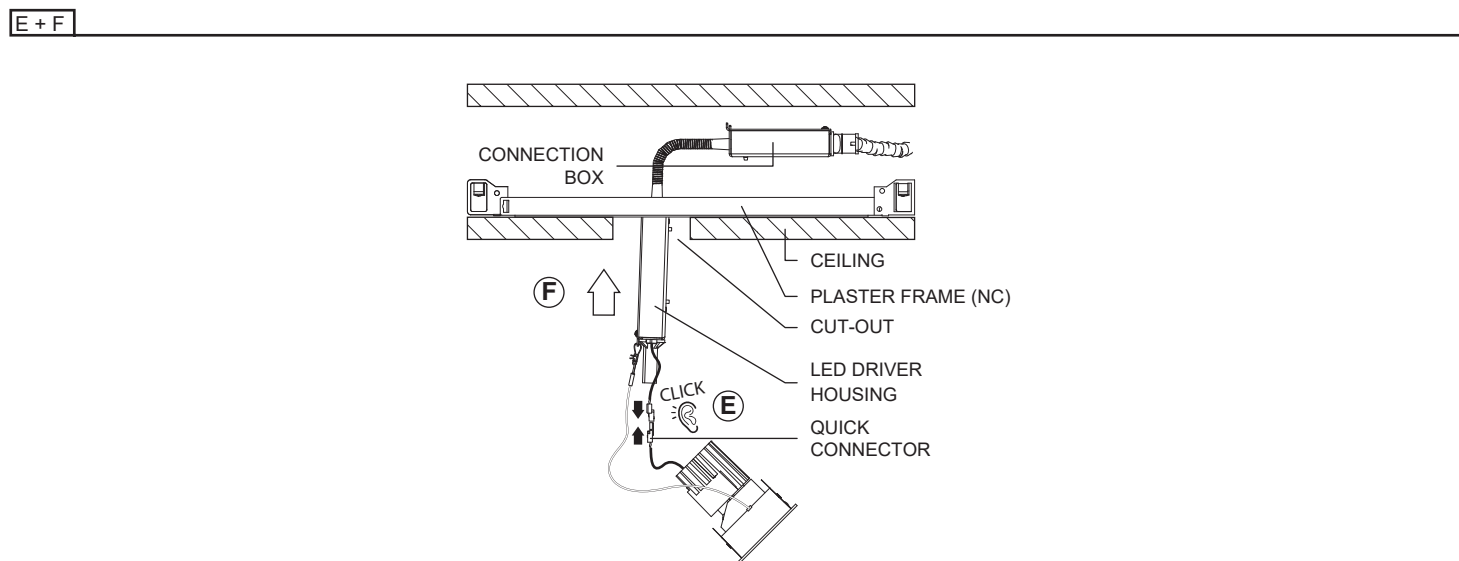
C- MAKE ALL NECESSARY CONNECTIONS (SEE WIRING DIAGRAM). * DAISY CHAIN CONNECTIONS NOT POSSIBLE FOR 0-10V DIMMING.

D- CLOSE CONNECTION BOX COVER AND SECURE WITH THE PHILLIPS HEAD SCREW.



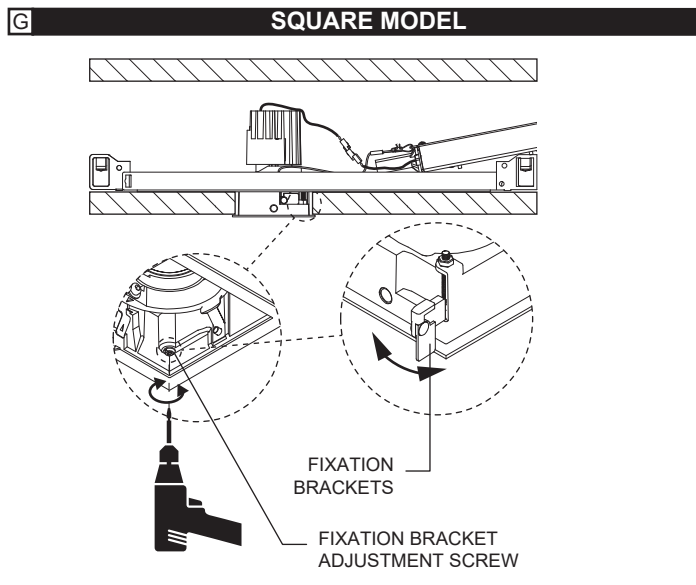
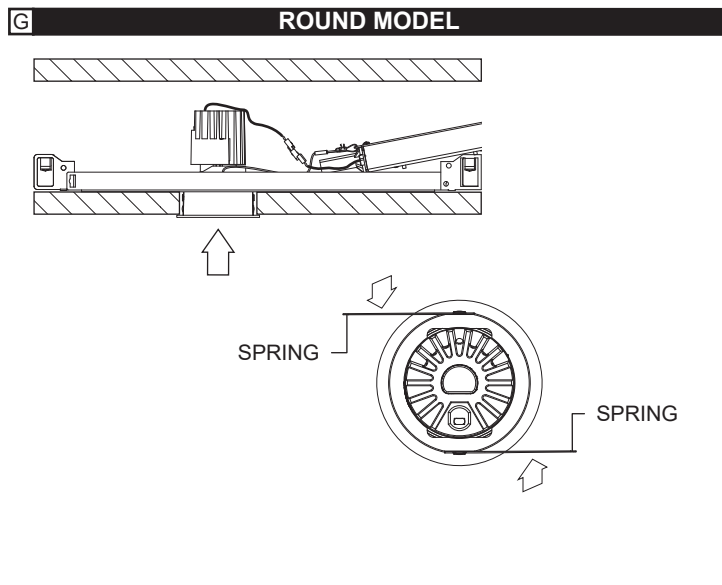
E- CONNECT THE FIXTURE TO THE DRIVER USING THE QUICK CONNECTOR.

F- STARTING WITH THE CONNECTION BOX, CAREFULLY INSERT THE ASSEMBLY THROUGHT THE CUT-OUT.



G- BEND AND HOLD SPRINGS AGAINST FIXTURE BODY AND ROTATE IN SPECIFIED DIRECTION (SEE BELOW) WHILE PUSHING UPWARD TO INSERT THE FIXTURE INTO THE CEILING.

G- INSERT FIXTURE INTO THE CEILING. TO SECURE THE FIXTURE INSIDE THE CEILING, SCREW THE FIXATION BRACKET ADJUSTMENT SCREW (2) WITH A DRILL (RECOMMENDED). FIXATION BRACKETS WILL OPEN AUTOMATICALLY WHILE SCREWING.



TRIMLESS - NEW CONSTRUCTION WITH PLASTER FRAME (NC) / REMODEL (RF)

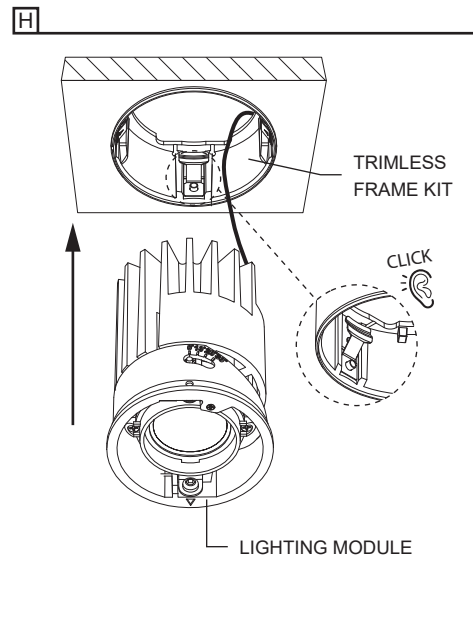
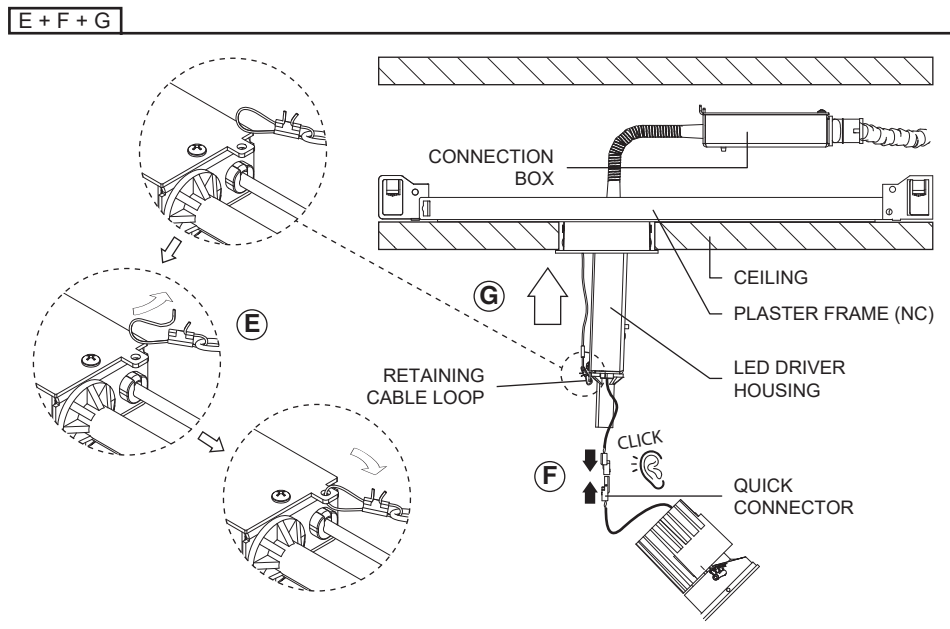
* FOLLOWING STEPS **A** TO **D** FROM PREVIOUS PAGE:

E- HOOK THE RETAINING CABLE'S LOOP ON THE LED DRIVER HOUSING.

F- CONNECT THE FIXTURE TO THE DRIVER USING THE QUICK CONNECTORS.

G- STARTING WITH THE CONNECTION BOX, CAREFULLY INSERT THE ASSEMBLY THROUGH THE FRAME KIT INTO THE CEILING.

H- INSERT LIGHTING MODULE INTO THE FRAME KIT UNTIL IT CLICKS IN PLACE.

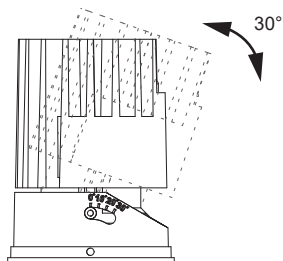


OPTICAL ADJUSTMENT AND FINAL ASSEMBLY

A- THE OPTICAL ORIENTATION CAN CHANGE FOR 30°, WITH MANUAL ADJUSTEMENT.

B- INSERT THE BAFFLE INTO THE TRIM UNTIL IT CLICKS INTO PLACE.

A



B

