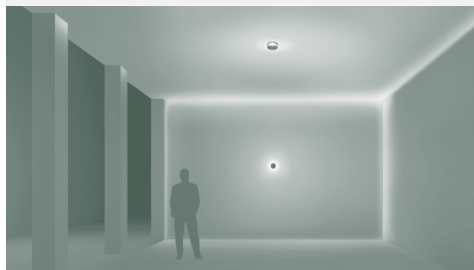
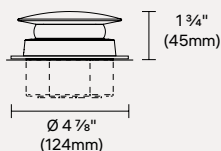


TRICK SMALL

Radial Effect - Integral

Project: _____

Type: _____



Surface mounted luminaire with 360° radial optic that emphasizes spaces with highly concentrated lines of light. Design by Dean Skira.

PHOTOMETRIC SUMMARY

Output	Size	Lumens (lm)	Efficacy (lm/W)	Max Candela (cd)
BO	S - Small	373	51	448

For 3000K, 80CRI. Consult [page 3](#) for full photometric data.

FINISH OPTIONS



Consult factory for custom finishes

OPTIC OPTIONS



Radial 360°

FEATURES

- Additional light effect available with integral driver: [180° Light Blade](#), [360° Light Blade](#) & [Wall Washer](#)
- Additional light effect available with remote driver: [180° Light Blade](#), [360° Light Blade](#), [Radial Effect](#) & [Wall Washer](#)
- Consult factory for further customization
- Full specification available [page 2](#)



ORDERING INFO

PRODUCT CODE

EXAMPLE: ITRC-S-BO-JB-830-RD360-UNV-01

MODEL	SIZE	OUTPUT	MOUNTING	LED	OPTIC	VOLTAGE	FINISH
ITRC Trick	S Small	BO Base Output (7.2 W)	JB Surface mounted junction box	830 3000K, 80CRI	RD360 Radial 360°	UNV 120-277V	01 White 02 Black 15 Gray F5 Rust Brown RAL#¹ Custom RAL

¹ Additional fees may apply for custom finish. Contact factory for details.

ACCESSORIES

To be ordered separately.

ACCESSORY CODE

EXAMPLE: IX021

ACCESSORIES
<p>IX021 3 Trick Bits Size Ø 3/8" (9mm) Height 1" (25mm)</p>
<p>IX022 3 Trick Bits Size Ø 1/2" (13mm) Height 1" (25mm)</p>

TRICK SMALL

Radial Effect - Integral

Project: _____
Type: _____

SPECIFICATIONS

LUMEN MAINTENANCE

80% of initial lumens at 100 000 hours (L80 B10) T77°F (25°C)
80% of initial lumens at 100 000 hours (L80 B10) T104°F (40°C)

OPTICS

360° radial effect.

MATERIAL

Body: Die-cast aluminum
Diffuser: PMMA lens
Hardware: Stainless steel screws

MOUNTING

Wall or ceiling mounted, to be installed on a standard octagonal 4" junction box. Floor mounting in dry location only (interior).

ELECTRICAL

Integral high efficiency LED driver, rated at 50 000 hours. 120-277V.

FINISH

Black (RAL9005), Gray (RAL9007), Rust Brown (RAL8017), and White (RAL9016) painted with a high level of weather and UV resistance. The semi-gloss finish coating is electrostatically applied durable acrylic enamel baked at high temperatures for superior color retentive finish. We provide RAL numbers that are similar, but we cannot guarantee an exact color match. For a more accurate color and gloss match, please contact customer service for a sample chip.

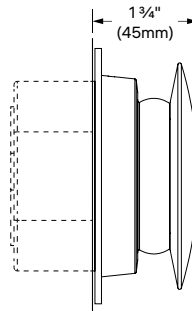
OPERATING TEMPERATURE

BO: From -30°C to 50°C (-22°F to 122°F)

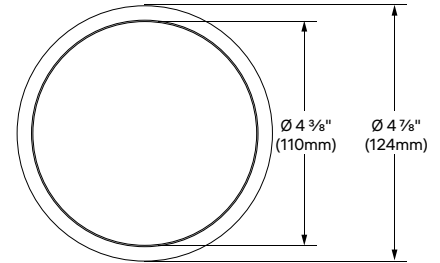
WEIGHT

0.6lb (0.27kg)

DIMENSIONS



SIDE VIEW



FRONT VIEW

FAMILY OVERVIEW

Line voltage version with integral LED drive



S - SMALL



Blade
360°



S - SMALL



Blade
180°



M - MEDIUM



Blade
180°



S - SMALL



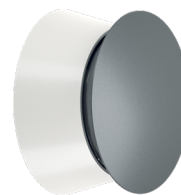
Radial
360°



M - MEDIUM



Radial
360°



L - LARGE



Radial
360°



S - SMALL



Wall
Washer



M - MEDIUM



Wall
Washer

PHOTOMETRIC DATA

CCT (K)	CRI	OUTPUT	POWER (W)	OPTIC	LUMENS (lm)	EFFICACY (lm/W)	MAX CANDELA (cd)	MODELS
3000	80	BO	7.2	360° Radial Effect	373	51	448	ITRC-S-BO-XX-830-RD360

Efficacy based on IESNA LM-79 test reports. Visit iguzzini.com/us for complete photometric data.

