

IMPORTANT - READ CAREFULLY BEFORE INSTALLING FIXTURE. RETAIN THESE INSTRUCTIONS FOR FUTURE REFERENCE.

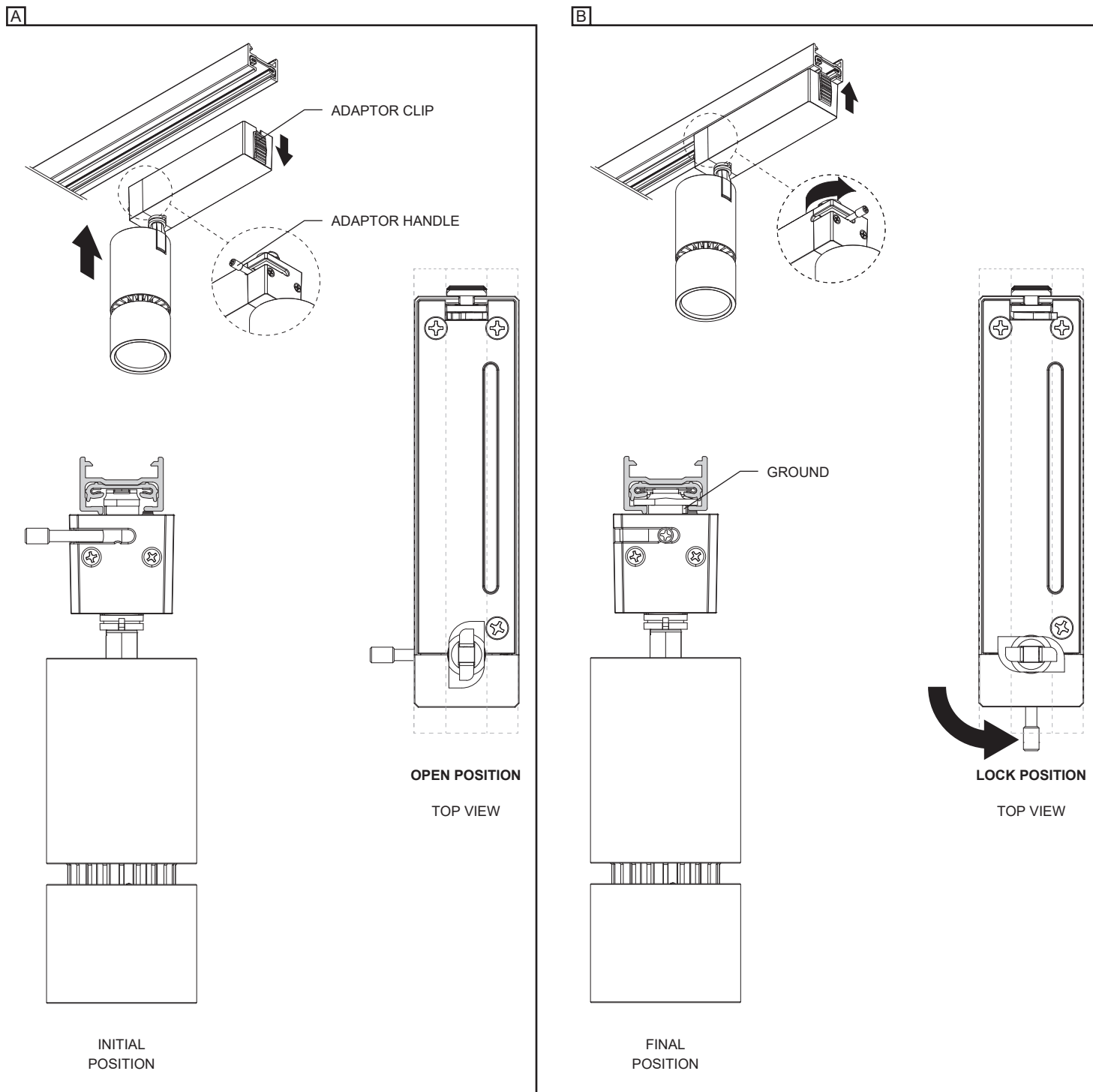
THIS PRODUCT MUST BE INSTALLED IN ACCORDANCE WITH THE NATIONAL ELECTRICAL CODE AND ALL APPLICABLE LOCAL CODES, BY A PERSON FAMILIAR WITH THE CONSTRUCTION AND OPERATION OF THE PRODUCT, AND THE HAZARDS INVOLVED. PROPER GROUNDING IS REQUIRED FOR SAFETY.

INSTALLING PROJECTOR ON ONE CIRCUIT LIGHTOLIER® LYTESPAN BASIC AND ADVENT SERIES TRACKS (120V)

FOR USE WITH **LIGHTOLIER® LYTESPAN BASIC AND ADVENT SERIES** (1 CIRCUIT) TRACK SYSTEM ONLY (120V)

A- PUSH DOWN THE ADAPTOR CLIP AND HOLD THE ADAPTOR HANDLE IN THE OPEN POSITION TO INSERT IN THE TRACK.

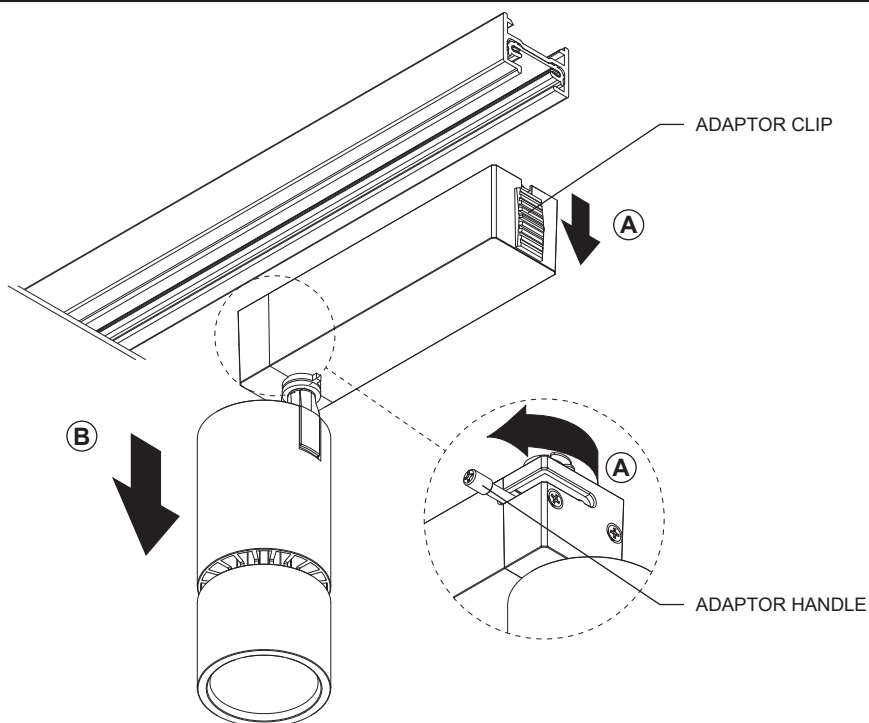
B- PLACE THE PROJECTOR IN THE TRACK AND RELEASE THE CLIP. ROTATE THE TRACK ADAPTOR HANDLE TO LOCK THE FIXTURE IN PLACE AND ALLOW ELECTRICAL BONDING.



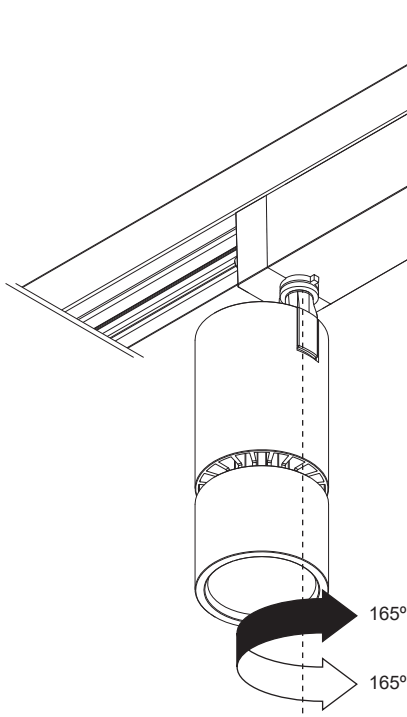
REMOVING PROJECTOR FROM ONE CIRCUIT TRACK

A- PUSH AND HOLD THE ADAPTOR CLIP DOWN. ROTATE THE ADAPTOR HOUSING HANDLE TO THE OPEN POSITION

B- REMOVE THE FIXTURE FROM THE TRACK.

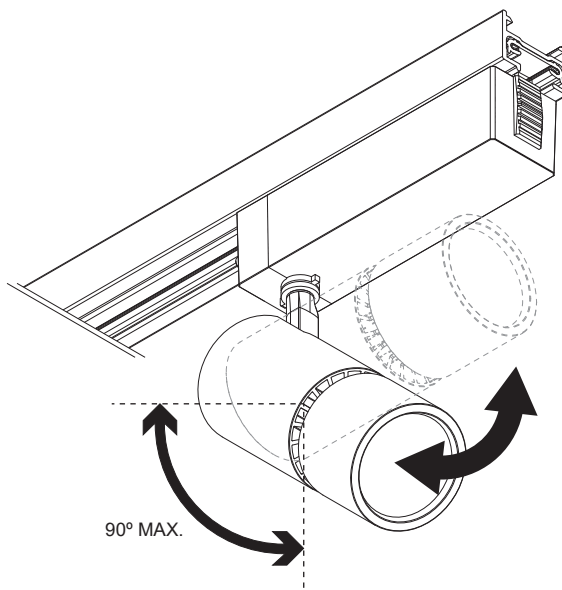
A + B**PAN ANGLE POSITION**

ADJUST THE FIXTURE TO DESIRED PAN POSITION (MAXIMUM OF 330° AXIAL ROTATION).



TILT ANGLE POSITION

ADJUST THE FIXTURE TO DESIRED TILT POSITION (MAXIMUM OF 90° AXIAL ROTATION).



REPLACING COMPONENTS FOR REFLECTOR MODELS

A - UNSCREW THE OPTIC HOLDER TO ACCESS THE COMPONENTS.

B - REPLACE THE REFLECTOR AND RE-INSTALL THE OPTIC HOLDER BACK IN PLACE.

A + B

