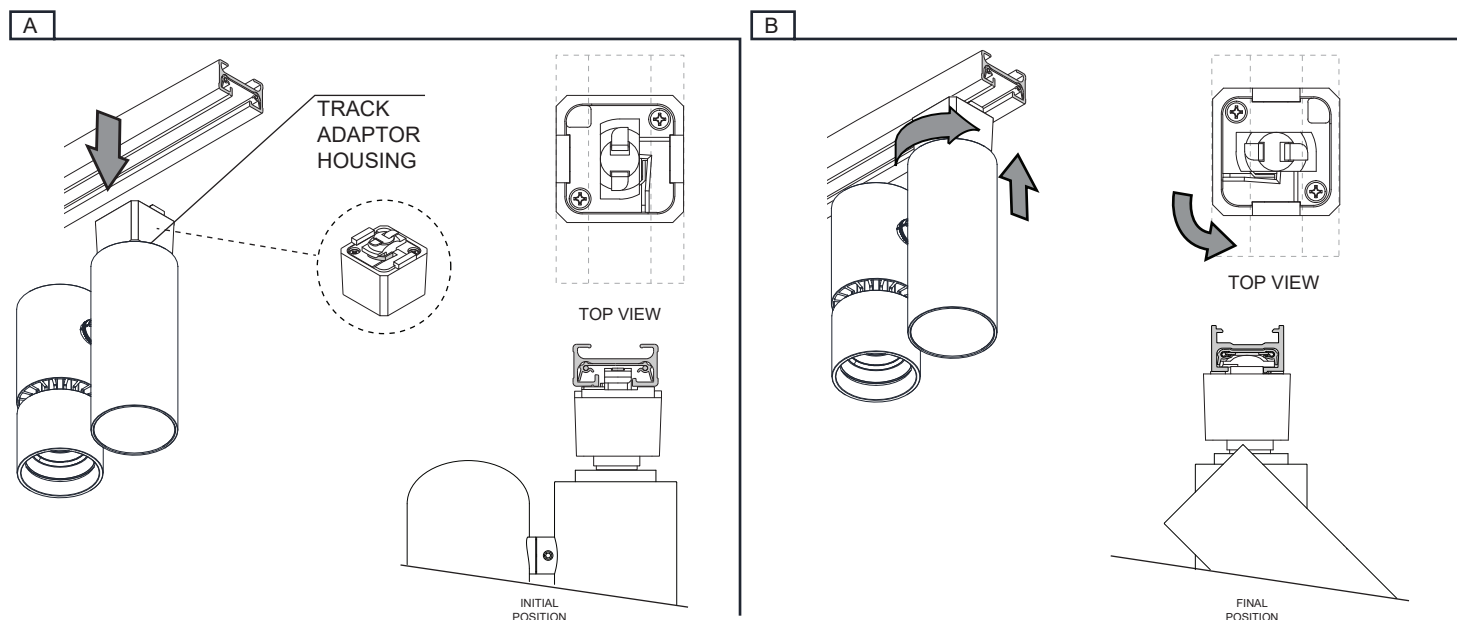


IMPORTANT - READ CAREFULLY BEFORE INSTALLING FIXTURE. RETAIN THESE INSTRUCTIONS FOR FUTURE REFERENCE.
THIS PRODUCT MUST BE INSTALLED IN ACCORDANCE WITH THE NATIONAL ELECTRICAL CODE AND ALL APPLICABLE LOCAL CODES, BY A PERSON FAMILIAR WITH THE CONSTRUCTION AND OPERATION OF THE PRODUCT, AND THE HAZARDS INVOLVED. PROPER GROUNDING IS REQUIRED FOR SAFETY.

INSTALLING PROJECTOR ON ONE CIRCUIT TRACK (120V)

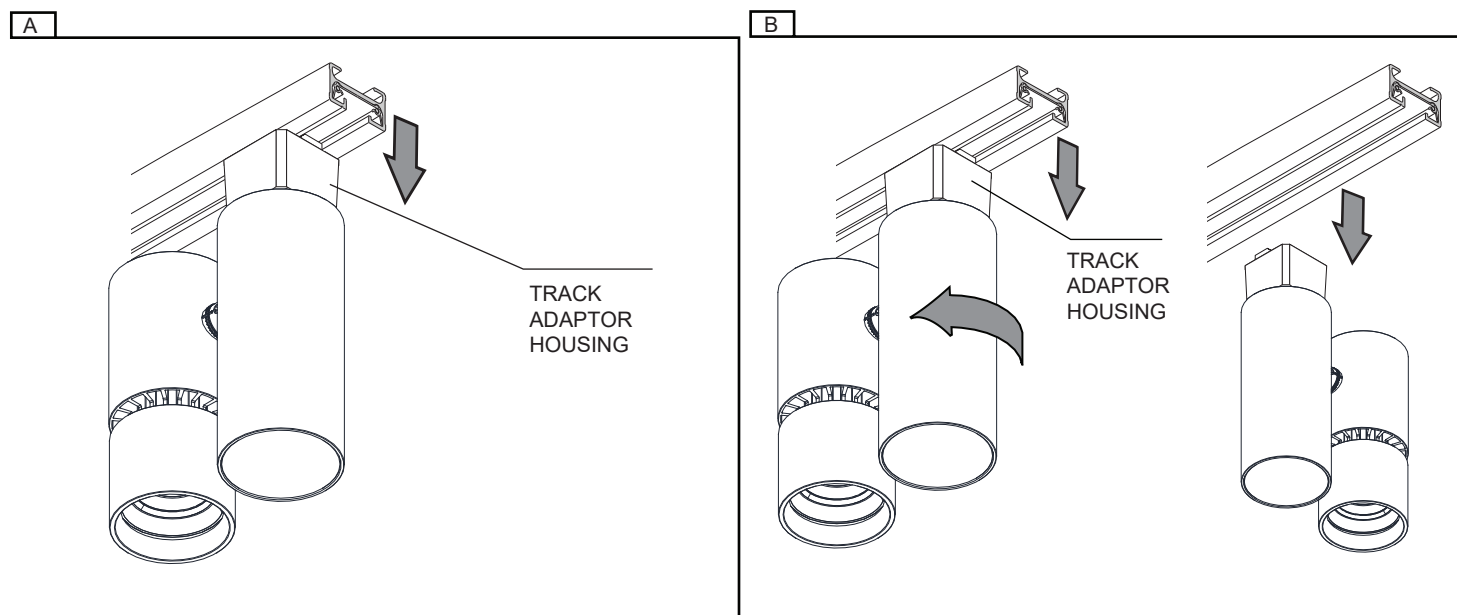
FOR USE WITH LIGHTOLIER'S LYTESPAN BASIC SERIES TRACK SYSTEM ONLY (120V)

- A - PULL THE ADAPTOR HOUSING DOWN TO INSERT IN THE TRACK FOLLOWING INITIAL POSITION SHOWN BELOW.
B - PUSH THE PROJECTOR INTO TRACK AND ROTATE THE TRACK ADAPTOR A QUARTER TURN IN THE PROPER DIRECTION IN ORDER TO ALLOW ELECTRICAL BOUNDING. MAKE SURE THE ADAPTOR IS LOCKED IN PLACE, FOLLOWING FINAL POSITION SHOWN BELOW.



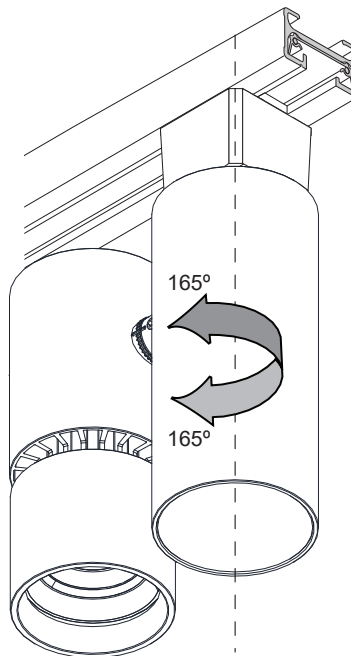
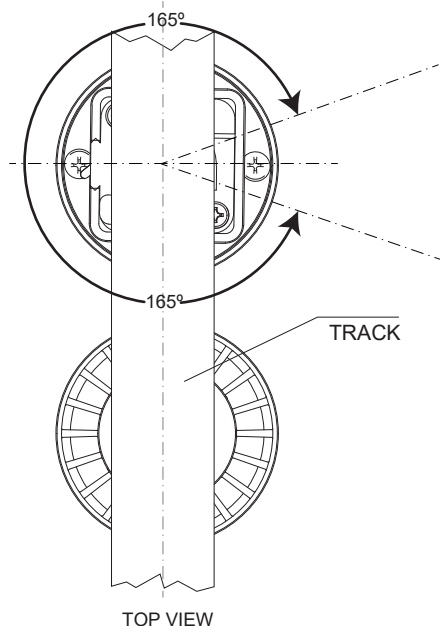
REMOVING PROJECTOR FROM TRACK

- A - PULL DOWN THE TRACK ADAPTOR HOUSING TO UNLOCK IT FROM THE TRACK SLOT.
B - HOLDING THE TRACK ADAPTOR HOUSING DOWN, ROTATE A QUARTER TURN IN ANY DIRECTION AND PULL DOWN THE PROJECTOR TO REMOVE IT FROM THE TRACK.



PAN ANGLE POSITION

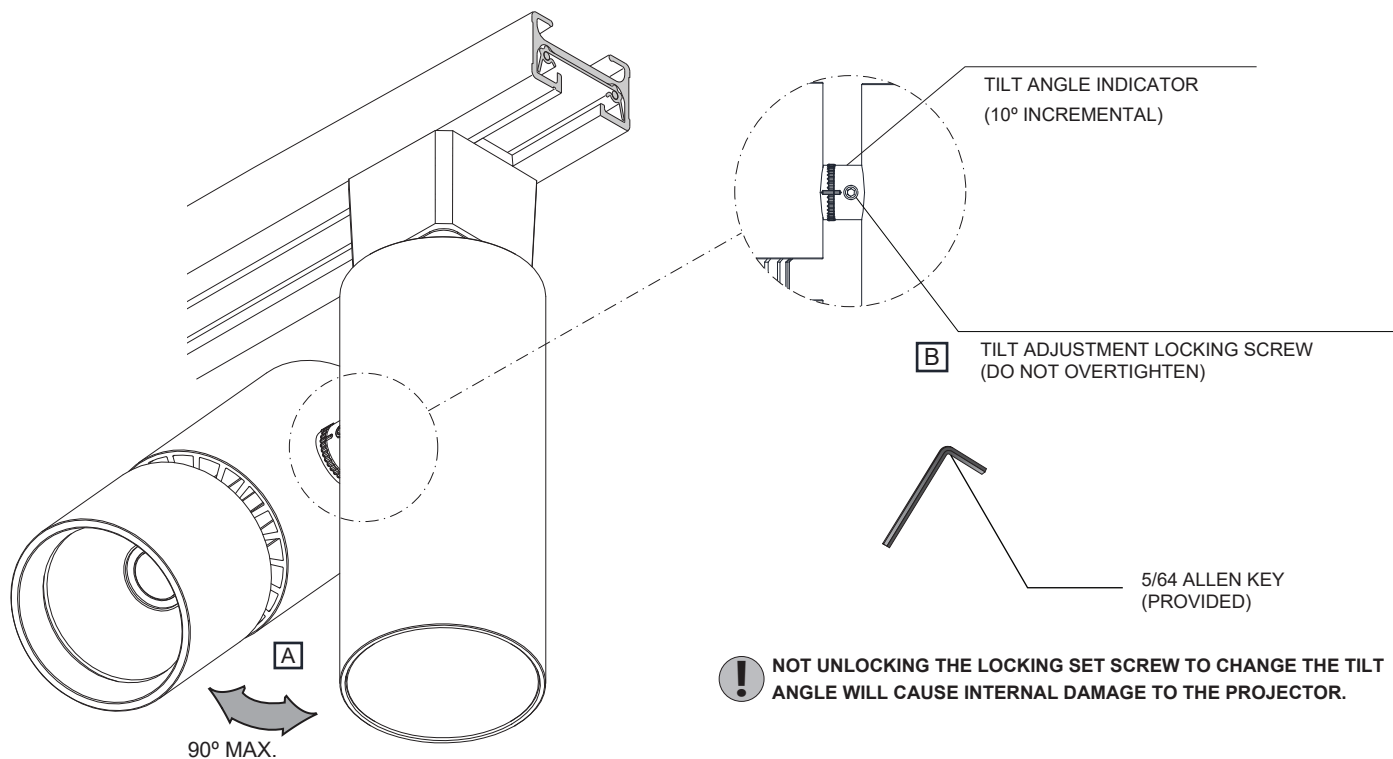
SET THE DESIRED PAN POSITION (MAXIMUM OF 330° AXIAL ROTATION).



TILT ANGLE POSITION

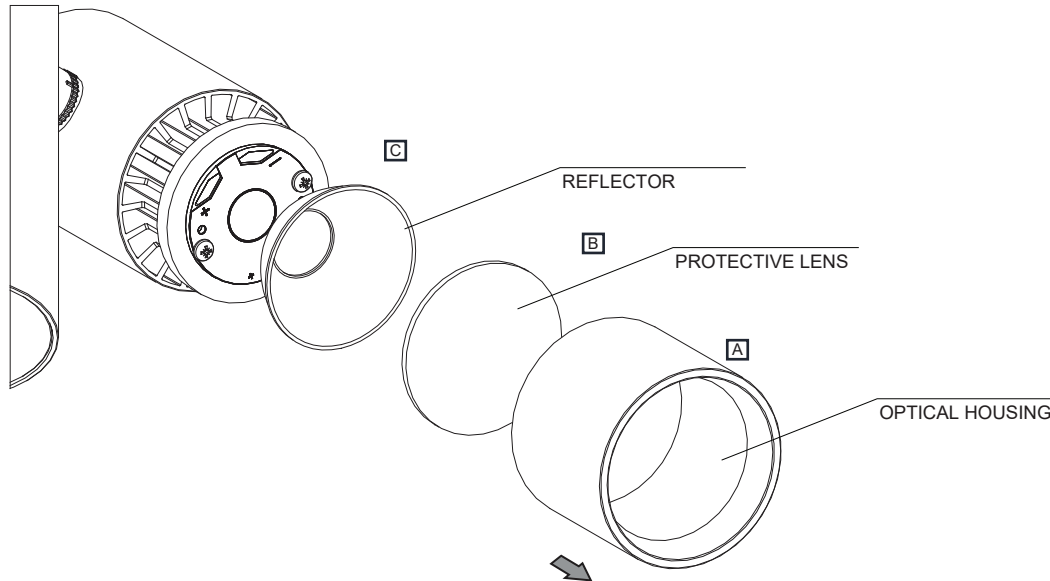
A- SET THE DESIRED TILT POSITION (MAXIMUM OF 90° AXIAL ROTATION).

B- LOCK THE POSITION WITH THE TILT ADJUSTMENT LOCKING SCREW, USING THE 5/64 ALLEN KEY PROVIDED.



REPLACING OPTIC FOR REFLECTOR MODELS

- A- REMOVE OPTICAL HOUSING BY ROTATING COUNTERCLOCKWISE.
B- LEAVE THE PROTECTIVE LENS IN THE OPTICAL HOUSING.
C- REMOVE OLD REFLECTOR AND INSERT THE NEW ONE INTO THE OPTICAL HOUSING.
D- RE-INSTALL THE PROTECTIVE LENS, OPTICAL HOUSING AND REFLECTOR TOGETHER BY ROTATING CLOCKWISE.



ACCESSORIES

- A- TO REPLACE OR ADD AN ACCESSORY, REMOVE OPTICAL HOUSING BY ROTATING IT COUNTERCLOCKWISE.
B- INSERT ONE OR MORE ACCESSORIES INTO THE OPTIC HOUSING.
C- RE-INSTALL THE ACCESSORIES AND OPTICAL HOUSING TOGETHER BY ROTATING CLOCKWISE.
(A MAXIMUM OF 3 ACCESSORIES IN COMBINATION)

