

Project name: _____

Type: _____



Shape is a surface mounted accent light creating uniform light on the outer edge of windows producing charming light effects on residential, public, historical and artistic facades. Miniaturization, versatility and high performances are the typical characteristics of this product which is able to illuminate wide openings with a minimum energy consumption.

Luminaire characteristics:

Power input: 5W

Lumens: 180 or 210 lm

Luminaire efficacy: 36 or 42 lm/W

Source: White LED (LM-80 tested)

3000K: 80CRI,

4000K: 70CRI.

Lumen maintenance: 70% of initial lumens at 50 000 hours (L70) LM-79 tested.

Optics: 170° Blade light Effect.

Mounting: Surface mounted using anchoring screws. Supplied with 3' long cable whip. See mounting options on page 2.

Material

Body: Die-cast aluminum with high corrosion resistance.

Hardware: Stainless steel screws (not visible).

Diffuser: Clear polycarbonate.

Electrical: See remote power supply options on page 3.

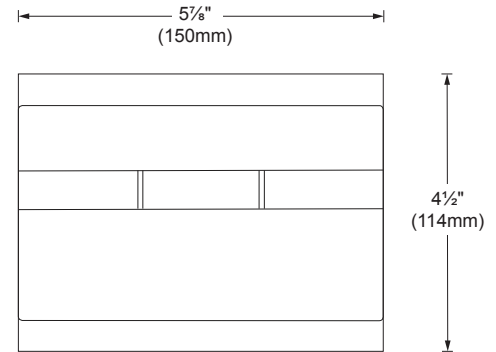
Finish: White or Aluminum gray.

Weight: 1.1lbs (0.5kg).

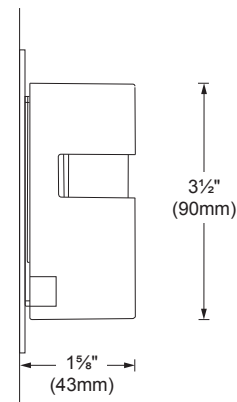
Warranty: 5 year limited warranty.

Certification: cULus listed for wet location.

Ratings: IP65, IK10.



FRONT VIEW



SIDE VIEW

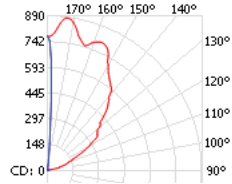
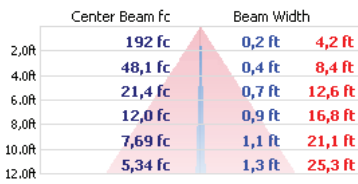
Project name: _____

Type: _____

TECHNICAL DATA

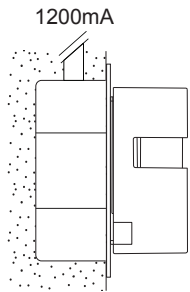
Nominal data, refer to IES files for absolute data.

LOAD (W)	CCT (K)	CRI	OPTIC	LUMENS (lm)	EFFICACY (lm / w)	MAX CANDELA (cd)	MODELS
5W	3000K	80	Blade light effect	180	36	880	S.6420W
	4000K	70		210	42	970	S.6420N

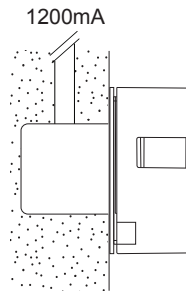


3000K - 80 CRI - 10° x 170° blade effect

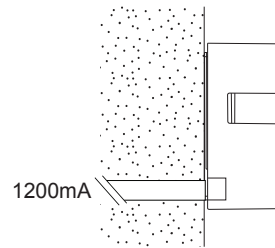
MOUNTING OPTIONS



JB-REM - 4" junction box with remote power supply. Mounting adapter plate for junction box installation. Min 1½" (38mm) deep.



J2-REM - 2" junction box with remote power supply. Mounting adapter plate for junction box installation. Min 1¼" (48mm) deep.



FW-REM - Fixture whip to remote power supply. Installed directly to surface with recessed pipe, exposed cable or electrical conduit.

Project name: _____

Type: _____

ORDERING INFO

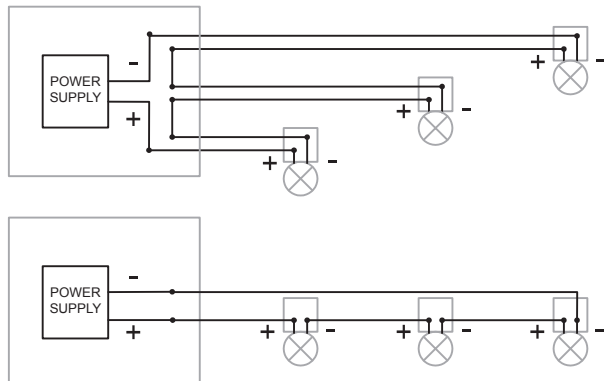
MODEL	MOUNTING	ELECTRICAL	FINISH
<p>MODEL</p> <p><input type="radio"/> S.6420W - 3000K, 80CRI</p> <p><input type="radio"/> S.6420N - 4000K, 70CRI</p>	<p>MOUNTING</p> <p><input type="radio"/> JB - Surface mounted with junction box</p> <p><input type="radio"/> J2 - Surface mounted with single gang box</p> <p><input type="radio"/> FW - Surface mounted with fixture whip</p>	<p>ELECTRICAL</p> <p><input type="radio"/> REM - remote</p>	<p>FINISH</p> <p><input type="radio"/> 01 - White</p> <p><input type="radio"/> 14 - Aluminum gray</p>
<p>REMOTE POWER SUPPLY OPTIONS (TO BE ORDERED SEPARATELY) Requirement for one (1) fixture: 4.7W, 1200mA</p> <p><input type="radio"/> 4450-1200-030-UNV-ED10 <input type="radio"/> 4549-1200-030-UNV-ED10</p> <p><input type="radio"/> 4450-1200-050-UNV-ED10 <input type="radio"/> 4549-1200-050-UNV-ED10</p>			

REMOTE POWER SUPPLY OPTIONS (TO BE ORDERED SEPARATELY)

Watts	Min-Max	Voltage	Rated	Dimming protocol	Box dimensions	Max distance 18AWG	Code
30	1-6	120-277V	Indoor	0-10V ELDOLED ECOdrive	8" X 8" X 4" (203 X 203 X 102mm)	72ft (22m)	4450-1200-030-UNV-ED10
50	1-10	120-277V	Indoor	0-10V ELDOLED ECOdrive	8" X 8" X 4" (203 X 203 X 102mm)	72ft (22m)	4450-1200-050-UNV-ED10
30	1-6	120-277V	Outdoor	0-10V ELDOLED ECOdrive	14" X 5" X 3" (356 X 127 X 76mm)	72ft (22m)	4549-1200-030-UNV-ED10
50	1-10	120-277V	Outdoor	0-10V ELDOLED ECOdrive	14" X 5" X 3" (356 X 127 X 76mm)	72ft (22m)	4549-1200-050-UNV-ED10

WIRING DIAGRAMS

*Multiple luminaires must be connected in series (home run or fixture chain)



DUE TO CONTINUOUS IMPROVEMENTS, THE INFORMATION HEREIN MAY BE CHANGED WITHOUT NOTICE.

LAST UPDATE: JUNE 13, 2018

JP - R3