

IMPORTANT - READ CAREFULLY BEFORE INSTALLING FIXTURE. RETAIN THESE INSTRUCTIONS FOR FUTURE REFERENCE.
THIS PRODUCT MUST BE INSTALLED IN ACCORDANCE WITH THE NATIONAL ELECTRICAL CODE AND ALL APPLICABLE LOCAL CODES, BY A PERSON FAMILIAR WITH THE CONSTRUCTION AND OPERATION OF THE PRODUCT, AND THE HAZARDS INVOLVED. PROPER GROUNDING IS REQUIRED FOR SAFETY.

INSTALLING PROJECTOR ON 2 CIRCUIT TRACK TEK/HTEK (CEILING OR WALL)

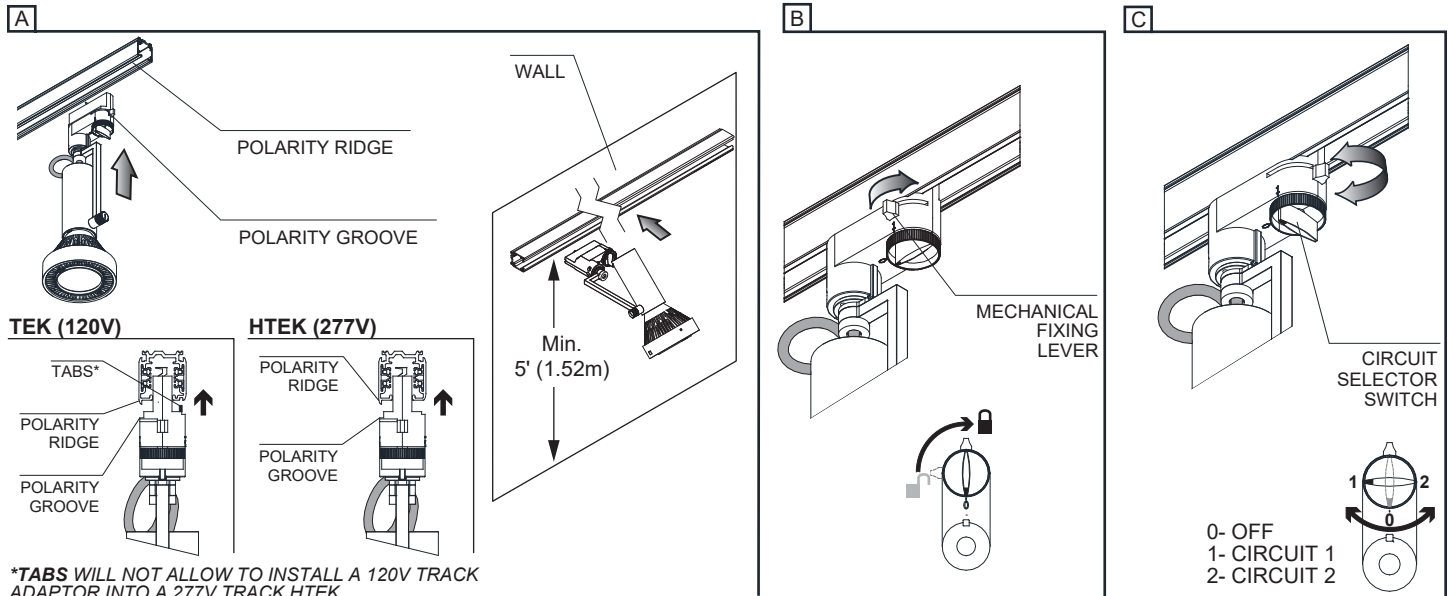
FOR USE WITH NORDIC **TEK SERIES** (120V) TRACK SYSTEM - OR NORDIC **HTEK SERIES** (277V) TRACK SYSTEM ONLY.

A- INSERT THE PROJECTOR TRACK ADAPTOR WITH THE POLARITY GROOVE TOWARDS THE POLARITY RIDGE ON THE TRACK AND PUSH INTO THE TRACK UNTIL IT SNAPS INTO PLACE.

FOR WALL INSTALLATION, MAKE SURE THE TRACK IS INSTALLED 5 FEET FROM GROUND.

B- TURN THE MECHANICAL FIXING LEVER TO **LOCK** THE PROJECTOR INTO THE TRACK.

C- SELECT THE DESIRED CIRCUIT WITH THE CIRCUIT SELECTOR SWITCH.

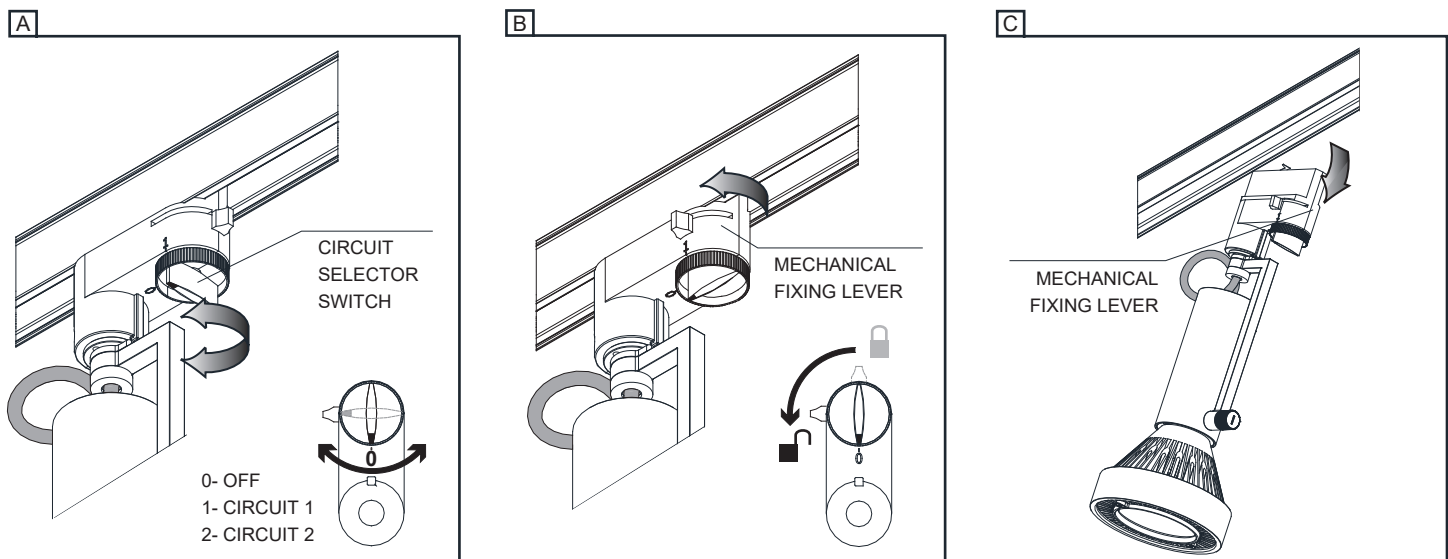


REMOVING PROJECTOR FROM TRACK

A- TO REMOVE THE PROJECTOR FROM TRACK, SELECT 0-POSITION (**OFF**) ON THE CIRCUIT SELECTOR SWITCH.

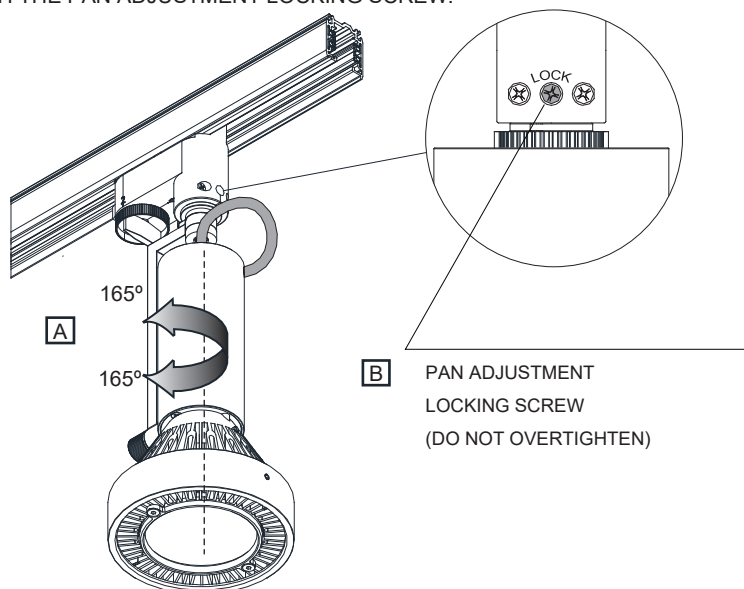
B- TURN THE MECHANICAL FIXING LEVER AS SHOWN TO **UNLOCK** THE PROJECTOR FROM THE TRACK.

C- PULL FIRST FROM THE FIXING LEVER END TO REMOVE THE PROJECTOR FROM THE TRACK.



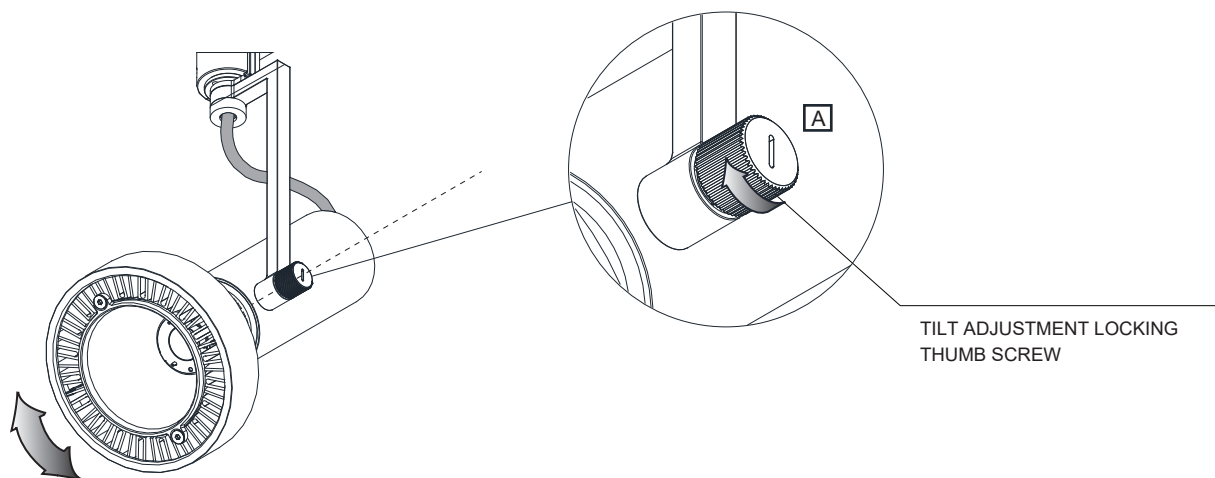
PAN ANGLE POSITION

- A- ADJUST THE DESIRED PAN POSITION. (MAXIMUM OF **330°** AXIAL ROTATION).
B- LOCK THE POSITION WITH THE PAN ADJUSTMENT LOCKING SCREW.



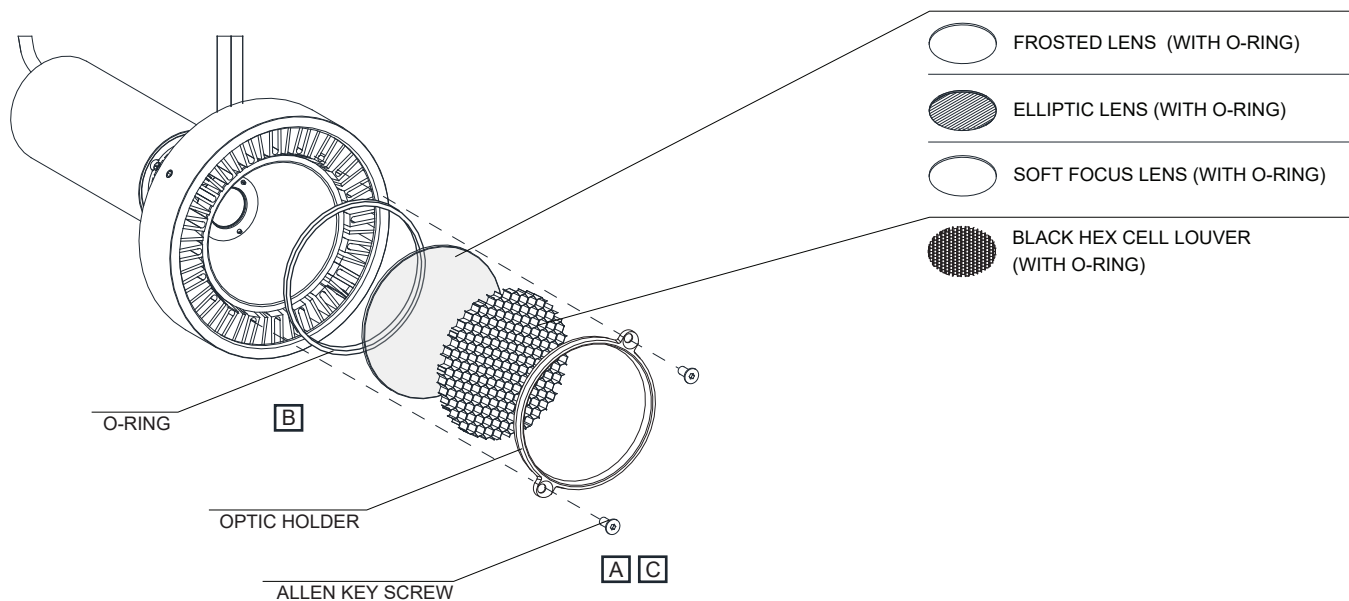
TILT ANGLE POSITION

- A- ADJUST THE DESIRED POSITION AND LOCK WITH THE LOCKING THUMB SCREW. YOU CAN USE A SLOT SCREW DRIVER FOR AN EVEN BETTER TIGHT ADJUSTMENT. (MAXIMUM OF **270°** AXIAL ROTATION)



REPLACING OPTIC

- A- UNSCREW THE TWO ALLEN KEY SCREWS TO REMOVE THE OPTIC HOLDER.
B- INSERT THE LENS OR THE LOUVER IN THE O-RING.
C- INSERT AND RE-INSTALL THE OPTIC HOLDER BACK IN PLACE.



ACCESSORIES (MAXIMUM OF TWO ACCESSORIES IN COMBINATION, REFLECTORS DO NOT COUNT AS ACCESSORY)

- A- UNSCREW THE TWO ALLEN KEY SCREWS TO REMOVE THE OPTIC HOLDER.
B- REPLACE THE REFLECTOR OR INSERT ACCESSORY AND RE-INSTALL THE OPTICAL HOLDER BACK IN PLACE.

