

Collection of pole mounted projector with minimal design for urban lighting. Suitable for a wide range of exterior architectural applications. Exceptional European build quality with high corrosion resistant finish.

Luminaire characteristics:

Power input: 16W
Lumens: 1000 lm (delivered for 3000k)
Luminaire efficacy: 60 lm/W

Source: White LED (LM-80 Tested)
3000K: 90CRI
4000K: 90CRI

Lumen maintenance: 70% of initial lumens at 50 000 hours (L70) (LM-79 tested)

Optics: Available in Narrow Spot, Narrow Flood or Elliptical with rotation around 3 axis. See details on page 2.

Material: Body: Die-cast Aluminum
Diffuser: Clear toughened glass
Hardware: Stainless steel screws and silicone gaskets

Mounting: Install on 4" (102mm) diameter pole. Supplied with 20ft of power cable.

Electrical: Integral high efficiency electronic power supply, rated at 50 000 hours, 120-277V.

Finish: White or Aluminum gray. Painted finish follows a double powder paint in 3 step process: surface treatment containing ceramic nano particles (Bonderite). Epoxy primer paint. Polyester powder paint with high resistance against UV rays and harsh weather conditions.

Weight: 4.4lb (2 kg)

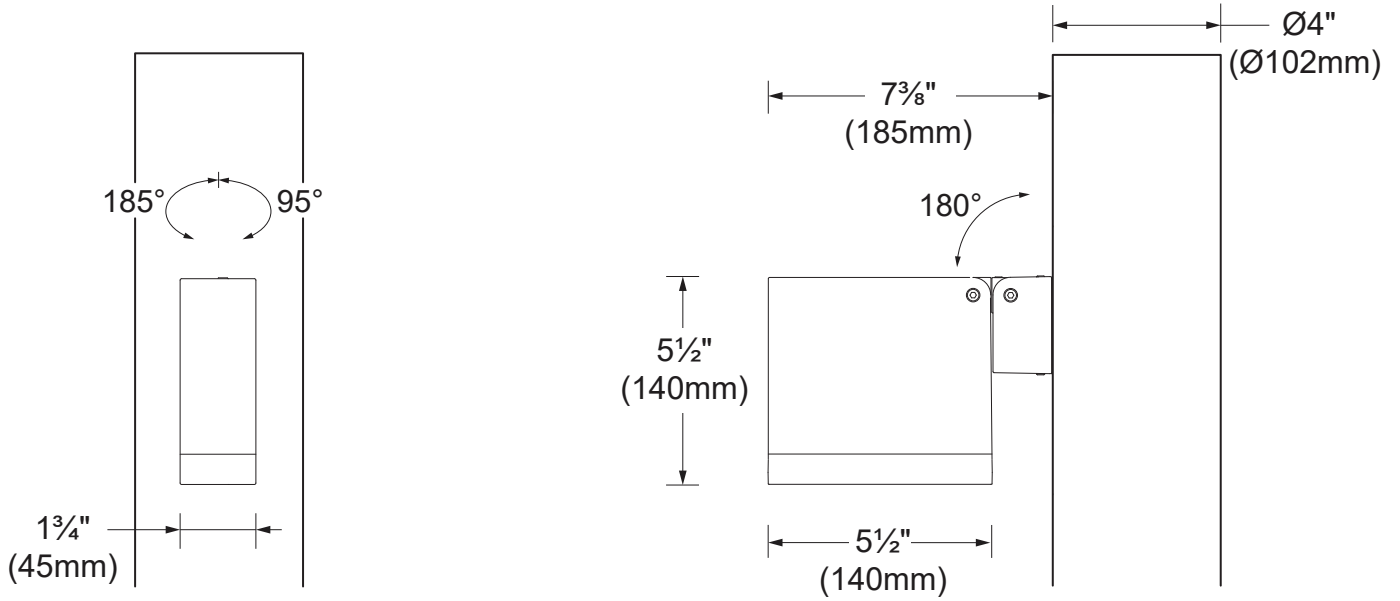
EPA: 0.25ft² (0.023m²)

Warranty: 5 year limited warranty.

Ratings: IP65, IK06

Certification:  cULus listed for wet location.

DIMENSIONS

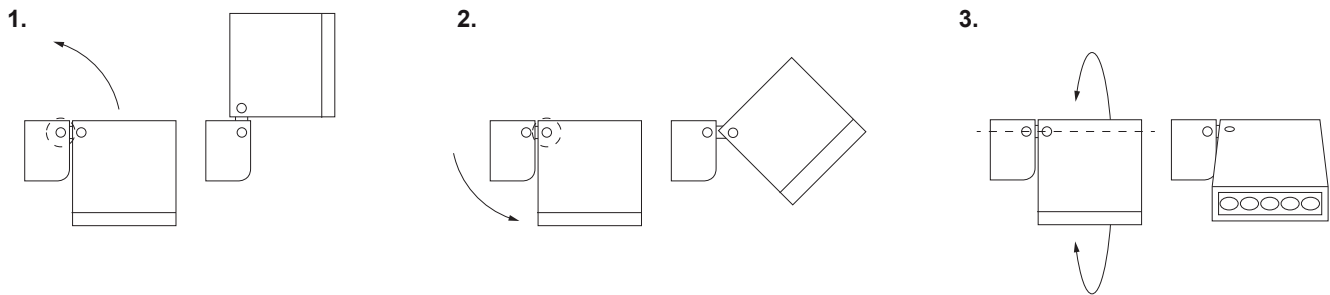


FRONT VIEW

SIDE VIEW

3 AXES ROTATION DETAIL

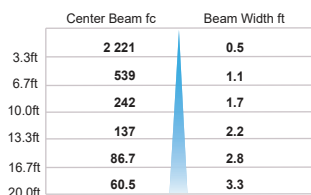
The special double joint guarantees total freedom in directing the light beam: the luminaire is able to rotate on three different axes.



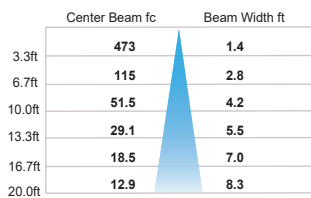
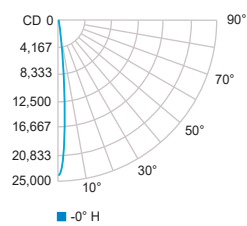
PHOTOMETRIC DATA

Visit sistimalux.com for complete photometric data.

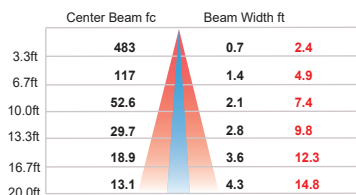
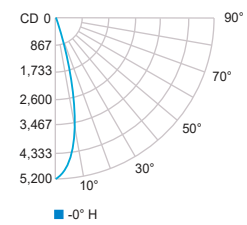
LOAD (W)	CCT (K)	CRI	OPTIC	LUMENS (lm)	EFFICACY (lm / w)	MAX CANDELA (cd)	MODELS
16W	3000K	90	Narrow Spot	1 015	63	24 185	S1530W
			Narrow Flood	950	59	5 150	S1531W
			Elliptical	950	59	5 305	S1533W



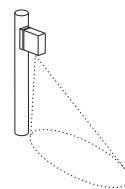
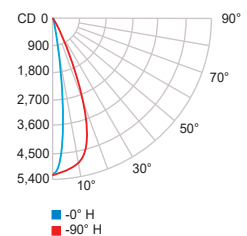
3000K - 90CRI - 10° Narrow Spot



3000K - 90CRI - 24° Narrow Flood



3000K - 90CRI - 12° x 40° Elliptical



Beam direction

POLE Ø4" (Ø 102mm)

SUPPLIED BY OTHER
CONTACT FACTORY FOR POLE DETAILS

SUPPLIED BY SISTEMALUX
CONTACT FACTORY FOR POLE SPECIFICATION

HEIGHT: _____ FT

MOUNTING HEIGHT: _____ FT

MODEL: Straight

INSTALLATION: Anchor bolts

ACCESS DOOR: Included (3' from ground)

MATERIEL: Aluminum

Galvanized steel

FINISH: 14 - Gray

Custom RAL _____

ORDERING INFO

- -
FIXTURE

MODEL

S1530W - 3000K, Narrow Spot

S1531W - 3000K, Narrow Flood

S1533W - 3000K, Elliptical

S1530N - 4000K, Narrow Spot

S1531N - 4000K, Narrow Flood

S1533N - 4000K, Elliptical

ELECTRICAL

UNV - 120-277V

FINISH

01 - White

14 - Aluminum gray