




Slim profile recessed grid ceiling luminaire provides a one or two circuit track. Available as single modules or continuous runs suitable for interior application where spot lights are required.

Material:	Body: Extruded aluminum profile with die-cast end caps. Mounting: Galvanized steel flanges.
Mounting:	Lay-in installation for grid ceilings. For 9/16" or 15/16" T-bars. Suitable for insulated ceilings.
Electrical:	One circuit: 120V with line voltage dimming capability. Two circuit: 120V or 277V with line voltage dimming capability.
Finish:	Available in white RAL9003 or black RAL9004. Track finish matches the aluminum extrusion. Gray (RAL9006) finish available on request with black track.
Weight:	1C track: 0.53 kg/ft (1.74 lbs/m) 2C track: 0.70 kg/ft (2.30 kg/m)
Warranty:	5 year limited warranty.
Ratings:	IP20 , IP00 (track)
Certification:	 cULus listed for dry location. Interior use only.

MADE IN CANADA.

ORDERING INFO

3705 - - T
FIXTURE

MODEL

3705 - Recessed grid ceiling

LENGTH

_____ 3' to 96'
Ordered by 1' increments.

TRACK

1C - One circuit track **2C** - Two circuit track

T - Track

VOLTAGE

120 - 120V **277** - 277V⁽¹⁾

FINISH⁽²⁾

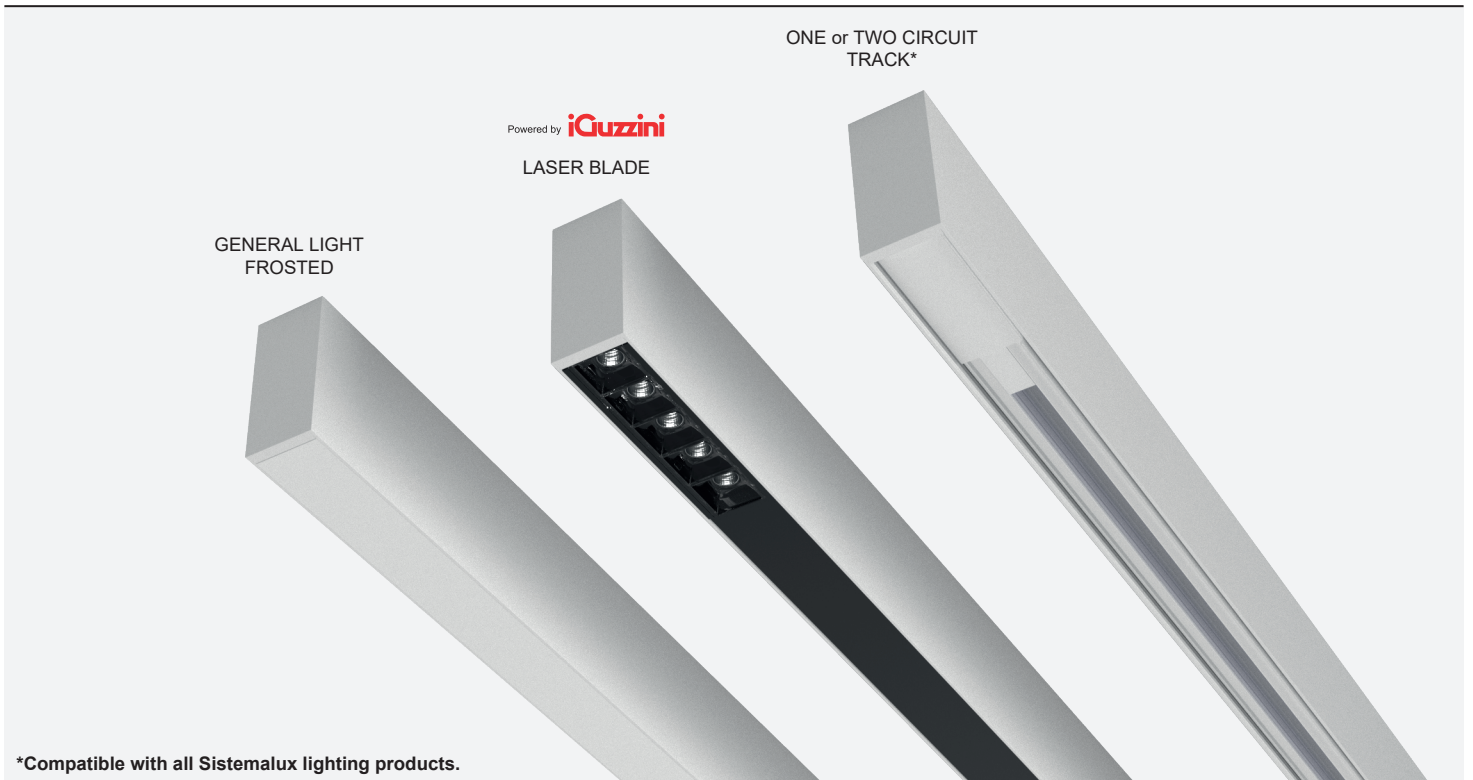
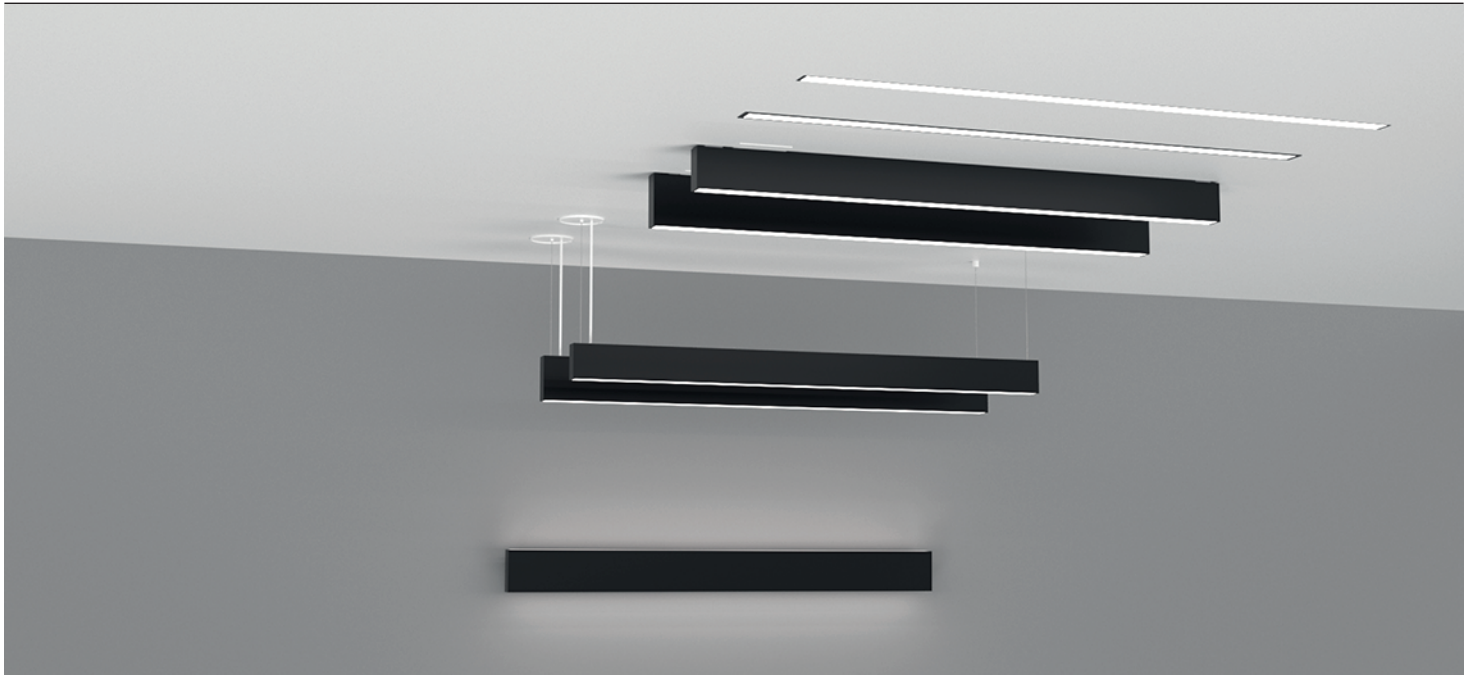
01 - White **02** - Black

⁽¹⁾ Available for two circuit track (2C) output.

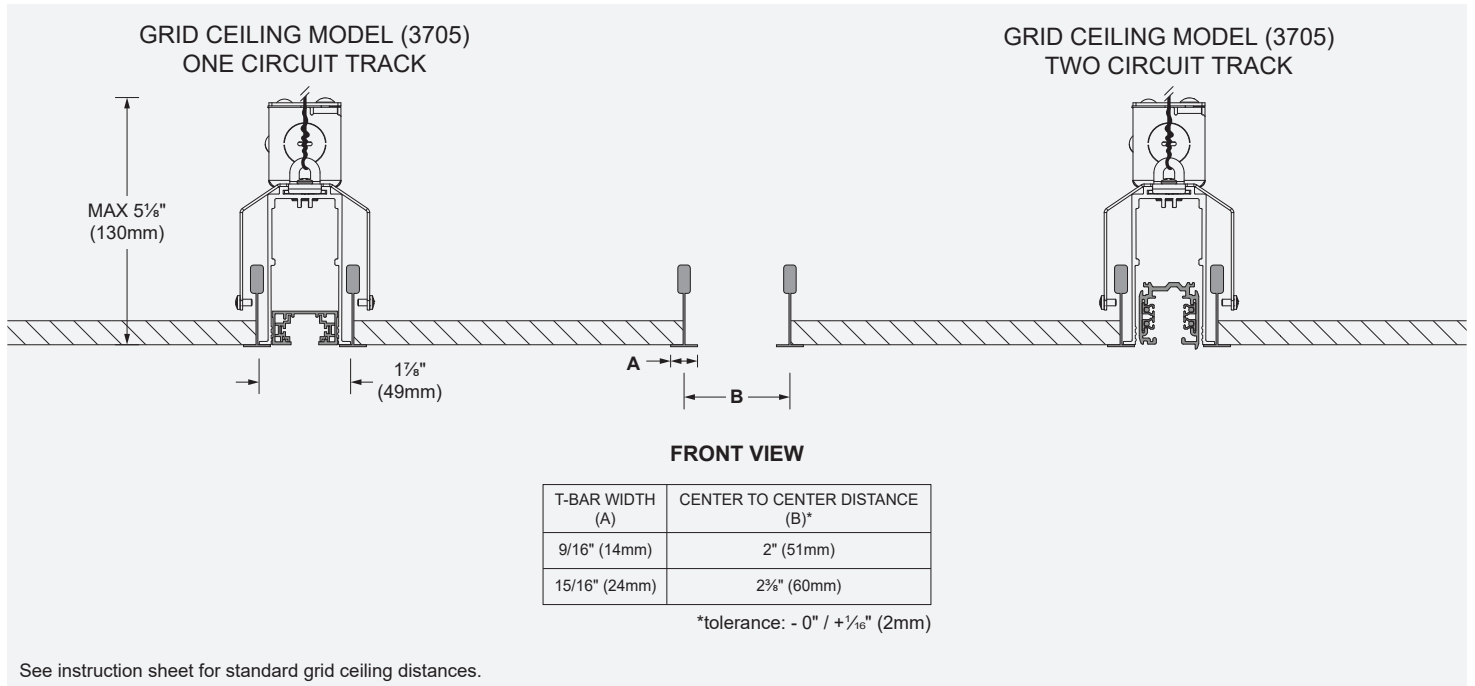
⁽²⁾ Gray finish available on request, contact customer service for more information. Track finish matches the aluminum extrusion. For gray finish, the track is provided in black.

FAMILY OVERVIEW

Linear EVO family offers a wide range of mounting and optic options for multiple applications



DIMENSIONS



LENGTHS

