

IMPORTANT - READ CAREFULLY BEFORE INSTALLING FIXTURE. RETAIN THESE INSTRUCTIONS FOR FUTURE REFERENCE.

THIS PRODUCT MUST BE INSTALLED IN ACCORDANCE WITH THE NATIONAL ELECTRICAL CODE AND ALL APPLICABLE LOCAL CODES, BY A PERSON FAMILIAR WITH THE CONSTRUCTION AND OPERATION OF THE PRODUCT, AND THE HAZARDS INVOLVED. PROPER GROUNDING IS REQUIRED FOR SAFETY.

SINGLE UNIT INSTALLATION (LENGTHS FROM 2' TO 8')

INTEGRAL DRIVER (120 / 277V)

DIMMING TRIAC/ELV (10%) OR 0-10V (1%)

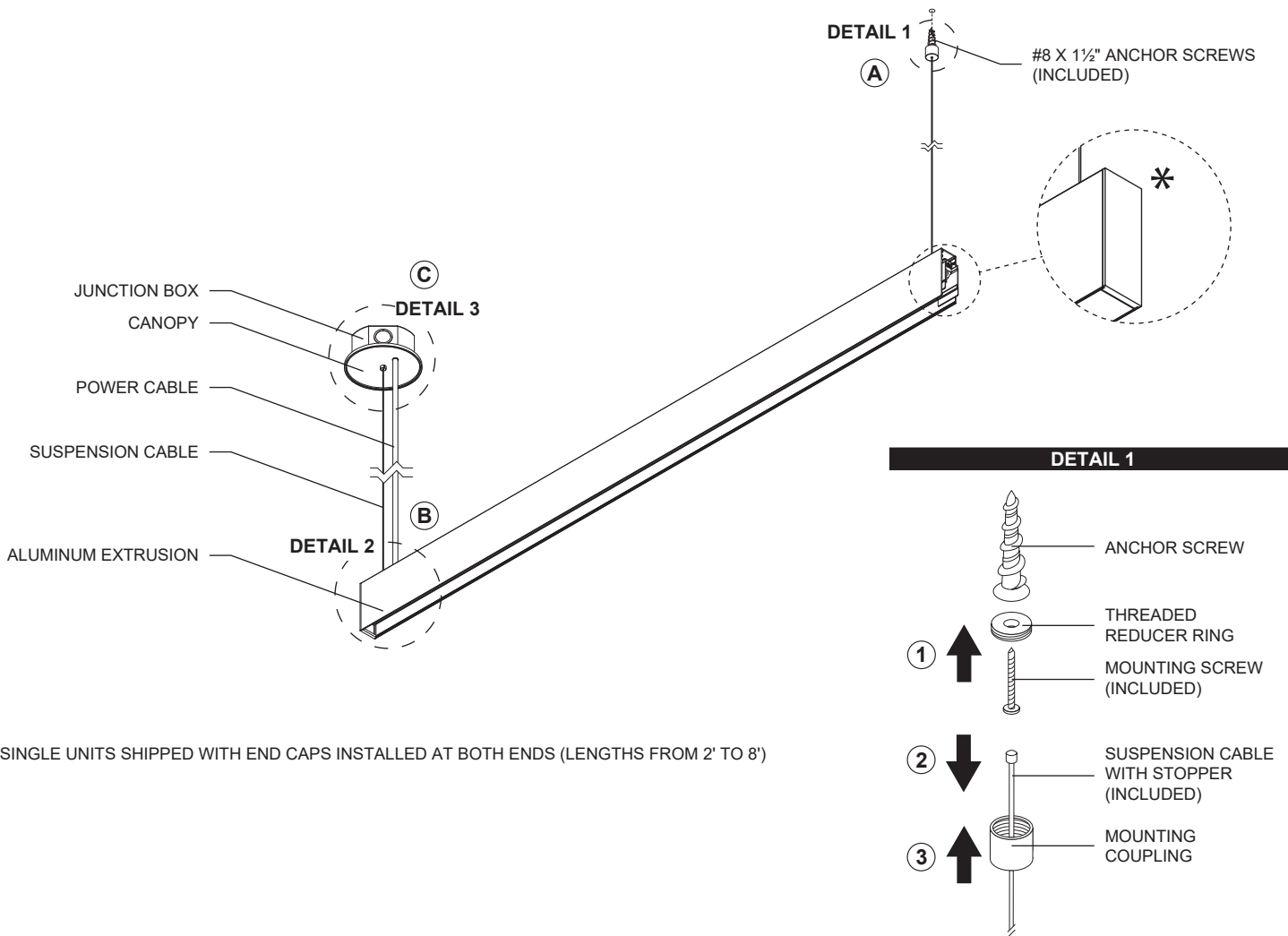
A- PREPARE CEILING WITH ANCHOR SCREWS (SEE ANCHOR DISTANCE ON P.5). **DETAIL 1:**

- 1- PASS SCREW THROUGH THREADED RING AND SECURE SCREW INTO PLASTIC ANCHOR SCREW.
- 2- PASS SUSPENSION CABLE THROUGH MOUNTING COUPLING.
- 3- FASTEN MOUNTING COUPLING TO THREADED RING.

B- FIX SUSPENSION CABLE TO ALUMINUM EXTRUSION (SEE **DETAIL 2** ON P.2).

C- CANOPY INSTALLATION AND JUNCTION BOX WIRING (SEE **DETAIL 3** ON P.3).

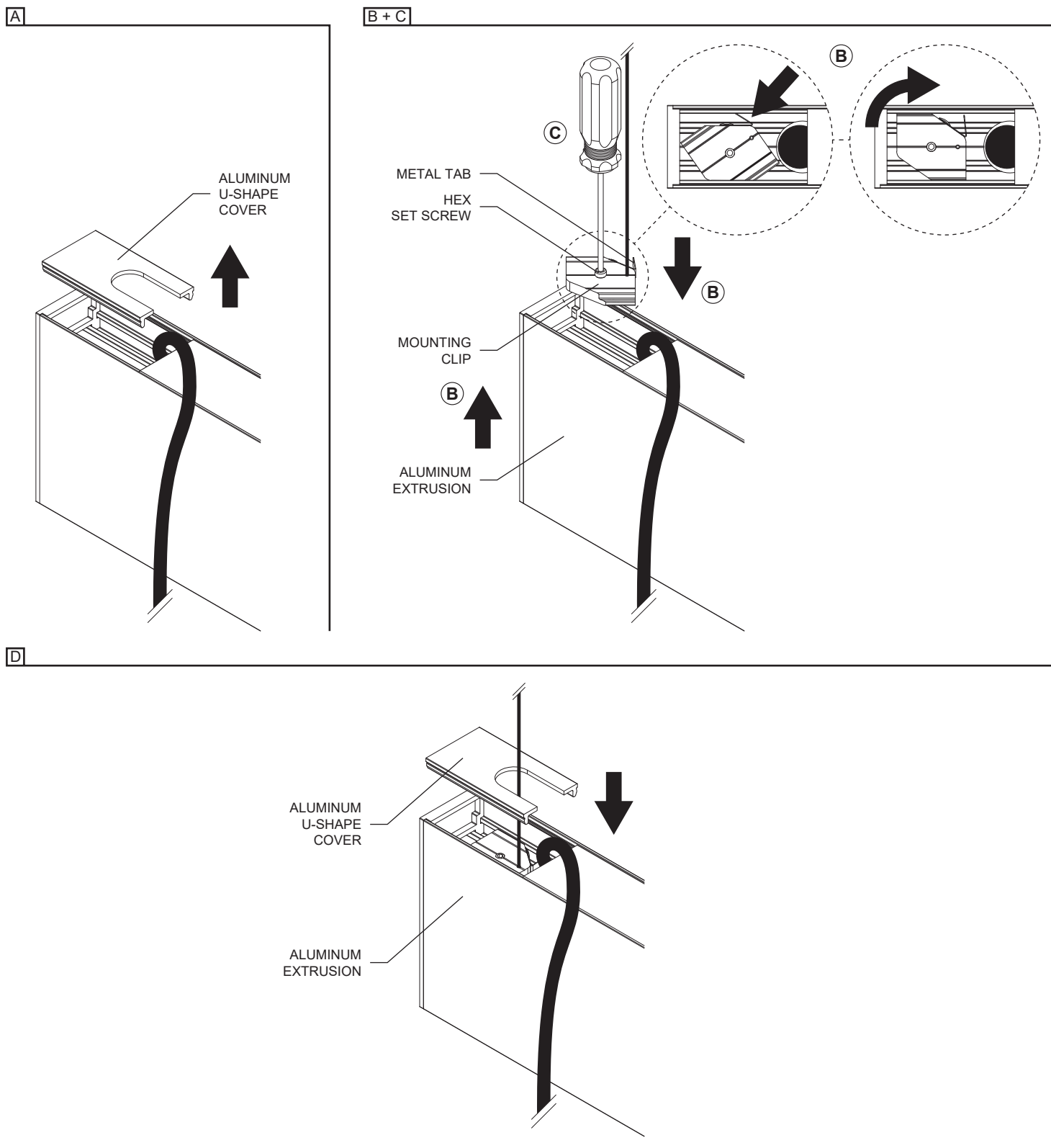
A + B + C



* SINGLE UNITS SHIPPED WITH END CAPS INSTALLED AT BOTH ENDS (LENGTHS FROM 2' TO 8')

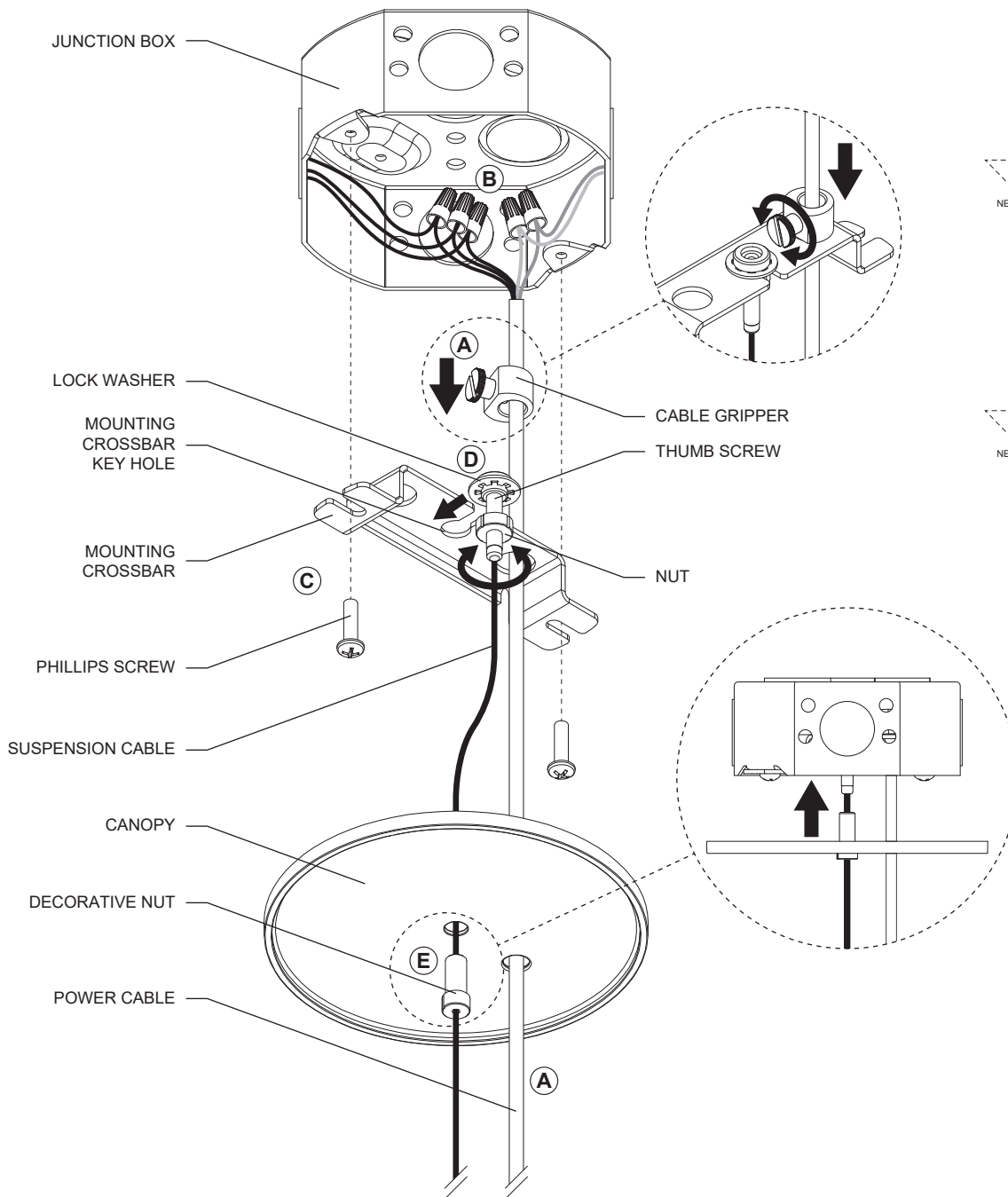
DETAIL 2 - MECHANICAL ASSEMBLY

- A- UNSNAP THE ALUMINUM U-SHAPE COVER.
- B- LIFT THE FIXTURE AND INSERT THE MOUNTING CLIP BY PUSHING IN THE METAL TAB.
ONCE THE MOUNTING CLIP IS INSERTED INTO THE ALUMINUM EXTRUSION, SPIN CLOCKWISE TO SET IT IN PLACE.
- C- FASTEN THE MOUNTING CLIP HEX SET SCREW TO PREVENT THE CLIP FROM SLIDING.
- D- SNAP THE ALUMINUM U-SHAPE COVER BACK ON THE ALUMINUM EXTRUSION.



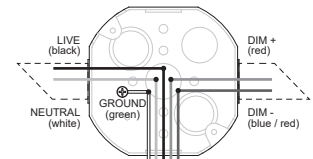
DETAIL 3 - CANOPY INSTALLATION

- A- RUN THE POWER CABLE THROUGH THE CANOPY AND THROUGH THE MOUNTING CROSSBAR HOLE. ADJUST THE CABLE LENGTH AND SECURE IT USING THE CABLE GRIPPER TO LOCK IT'S POSITION AGAINST THE MOUNTING CROSSBAR.
- B- MAKE NECESSARY WIRE CONNECTIONS (**SEE WIRING DIAGRAM**) USING TWIST CONNECTORS (**NOT INCLUDED**).
FOR DIMMING 0-10V: WIRES MUST BE RUN THROUGH A SEPARATE KNOCKOUT HOLE WHEN CONNECTING DIMMING CONTROLLER.
- C- INSTALL MOUNTING CROSSBAR USING (2) PHILLIPS SCREWS (**INCLUDED**).
- D- PASS THUMB SCREW INTO THE MOUNTING CROSSBAR KEY HOLE WITH IT'S LOCK WASHER ON TOP. HOLD SUSPENSION CABLE DOWN IN POSITION AND SECURE WITH THE PROVIDED NUT.
- E- SECURE CANOPY BY SCREWING THE CANOPY'S DECORATIVE NUT ON THE MOUNTING CROSSBAR'S THUMB SCREW.



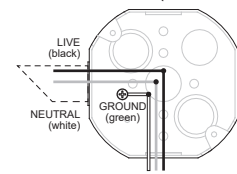
WIRING DIAGRAM*

DIMMING 120-277V
0-10V (D01)



FIXTURE CABLES

DIMMING (LTE)
TRIAC/ELV (120V ONLY)

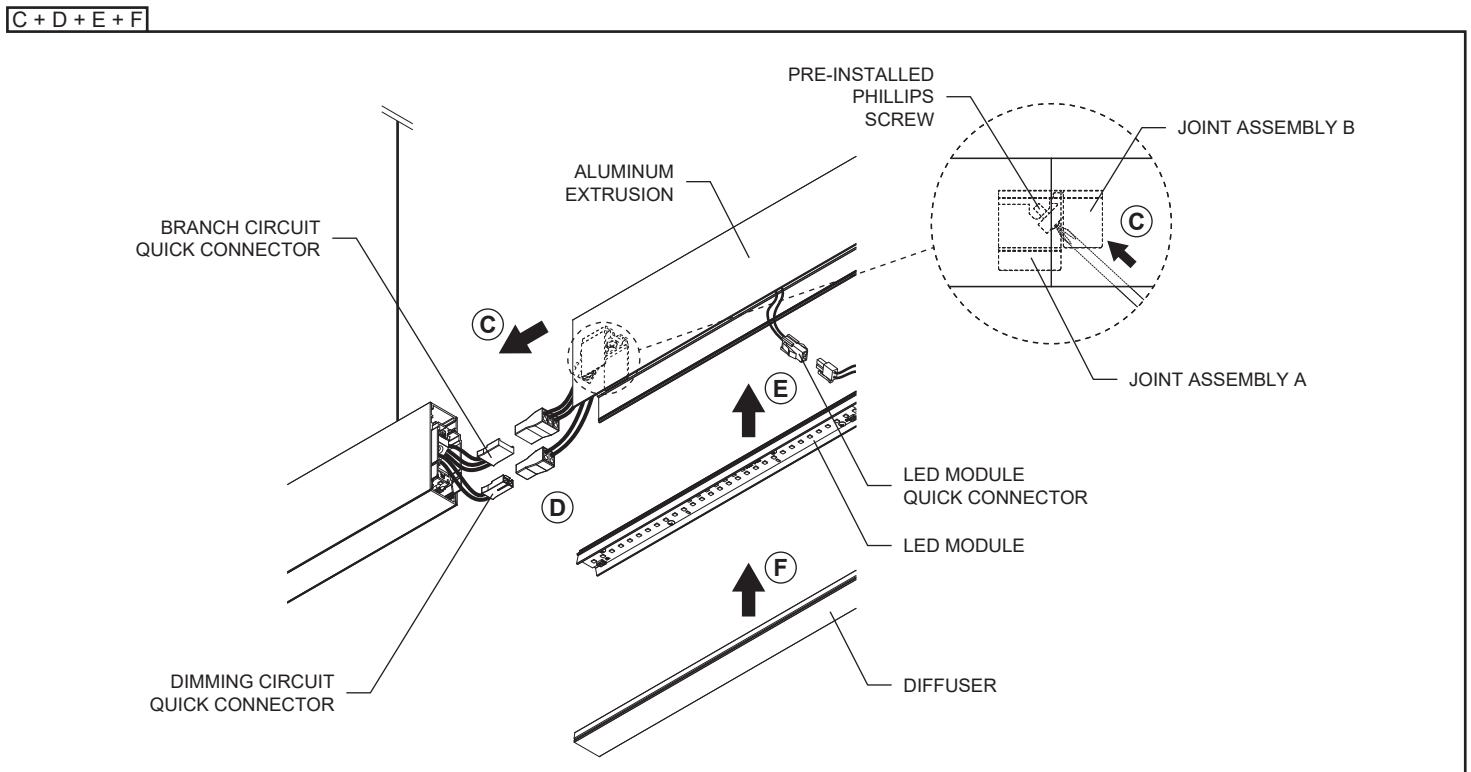
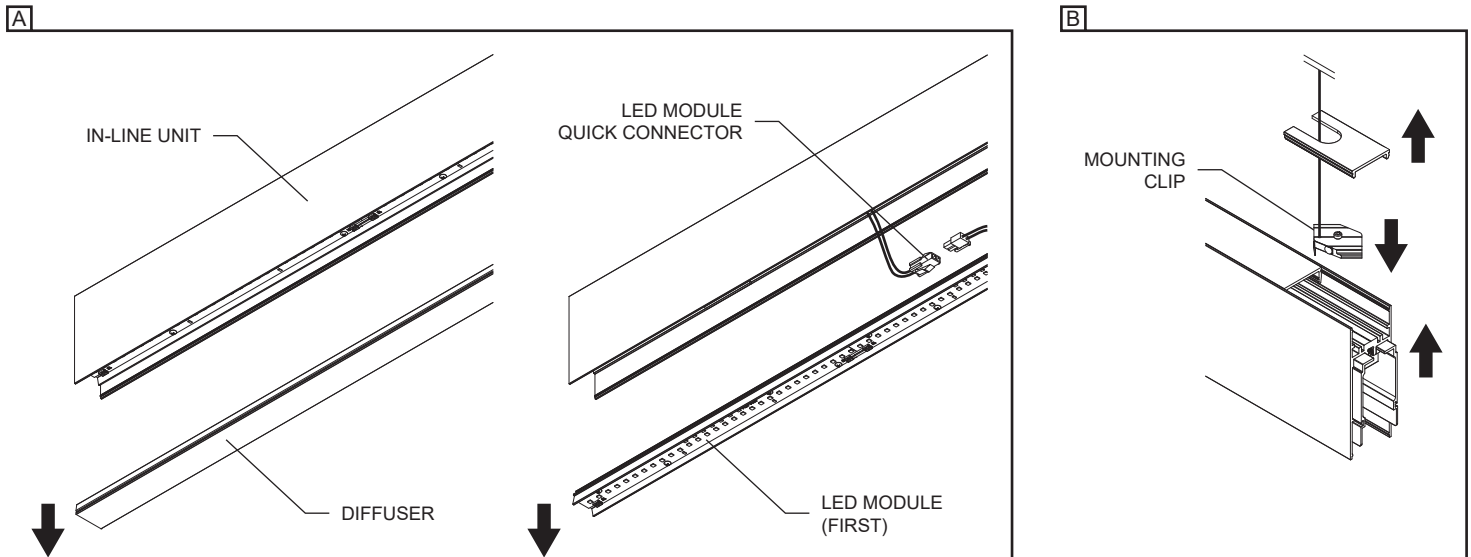


FIXTURE CABLES

*for reference only

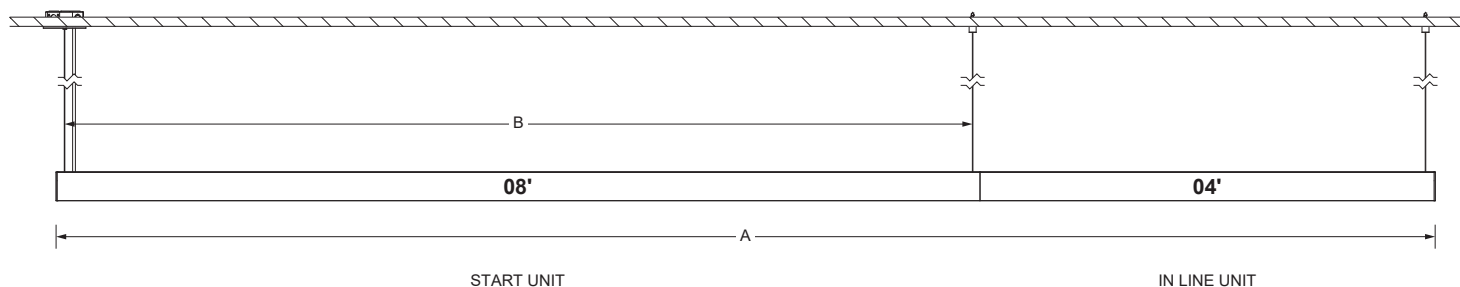
IN-LINE UNIT INSTALLATION (LENGTHS FROM 9' AND MORE)

- A- UNSNAP THE DIFFUSER AND REMOVE THE FIRST LED MODULE BY PUSHING ON IT AT THE BEGINNING PART OF THE IN-LINE FIXTURE. DISCONNECT THE LED MODULE QUICK CONNECTOR.
- B- LIFT THE IN-LINE UNIT AND INSTALL THE MOUNTING CLIP REPEATING PREVIOUS STEPS (SEE DETAIL 1 & 2 ON P.1-2).
- C- ALIGN THE FIXTURES AND JOIN THEM TOGETHER BY TIGHTENING THE PRE-INSTALLED PHILLIPS SCREW ON THE JOINT ASSEMBLY A TO THE JOINT ASSEMBLY B. DO NOT OVERTIGHTEN AND MAKE SURE TO NOT SQUEEZE ANY CABLES.
- D- MAKE THE NECESSARY CONNECTIONS USING THE QUICK CONNECTORS.
- E- CONNECT THE LED MODULE'S QUICK CONNECTOR AND SNAP THE LED MODULE BACK INTO THE ALUMINUM EXTRUSION.
- F- SNAP THE DIFFUSER BACK INTO THE ALUMINUM EXTRUSION.



PENDANT ANCHOR POINTS DISTANCE AND FEED QUANTITY

IN-LINE SYSTEM



ANCHOR POINTS FOR LINEAR PENDANT MODEL 3400 ⁽¹⁾			
Nominal length	Actual length (A)	Anchor distance (B)	Feed quantity ⁽²⁾
04'	4' (1.218m)	3'-9" (1.144m)	1
08'	7'-11 ⁷ / ₈ " (2.435m)	7'-9" (2.362m)	
12'	11'-11 ⁵ / ₈ " (3.649m)	7'-9" + 3'-11 ³ / ₁₆ " (2.362 + 1.214m)	
16'	15'-11 ⁵ / ₈ " (4.866m)	7'-9" + 7'-11 ³ / ₄ " (2.362 + 2.431m)	
24'	23'-11 ¹ / ₄ " (7.297m)	7'-9" + (2 x 7'-11 ³ / ₄ " (2.362 + (2 x 2.431m)	
32'	31'-11" (9.728m)	7'-9" + (3 x 7'-11 ³ / ₄ " (2.362 + (3 x 2.431m)	
48'	47'-10 ¹ / ₄ " (14.591m)	7'-9" + (5 x 7'-11 ³ / ₄ " (2.362 + (5 x 2.431m)	2
64'	63'-9 ³ / ₄ " (19.453m)	7'-9" + (7 x 7'-11 ³ / ₄ " (2.362 + (7 x 2.431m)	
72'	71'-9 ⁹ / ₁₆ " (21.884m)	7'-9" + (8 x 7'-11 ³ / ₄ " (2.362 + (8 x 2.431m)	3
96'	95'-8 ¹¹ / ₁₆ " (29.176m)	7'-9" + (11 x 7'-11 ³ / ₄ " (2.362 + (11 x 2.431m)	

⁽¹⁾ Refer to the anchor guide document for full list of available lengths.

⁽²⁾ 6A max per feed.