

TRIMLESS : LOG4/5/6 - R/S - L - IC/CP - X - XXX - XXX - 120/277 - XX - D10/LTE

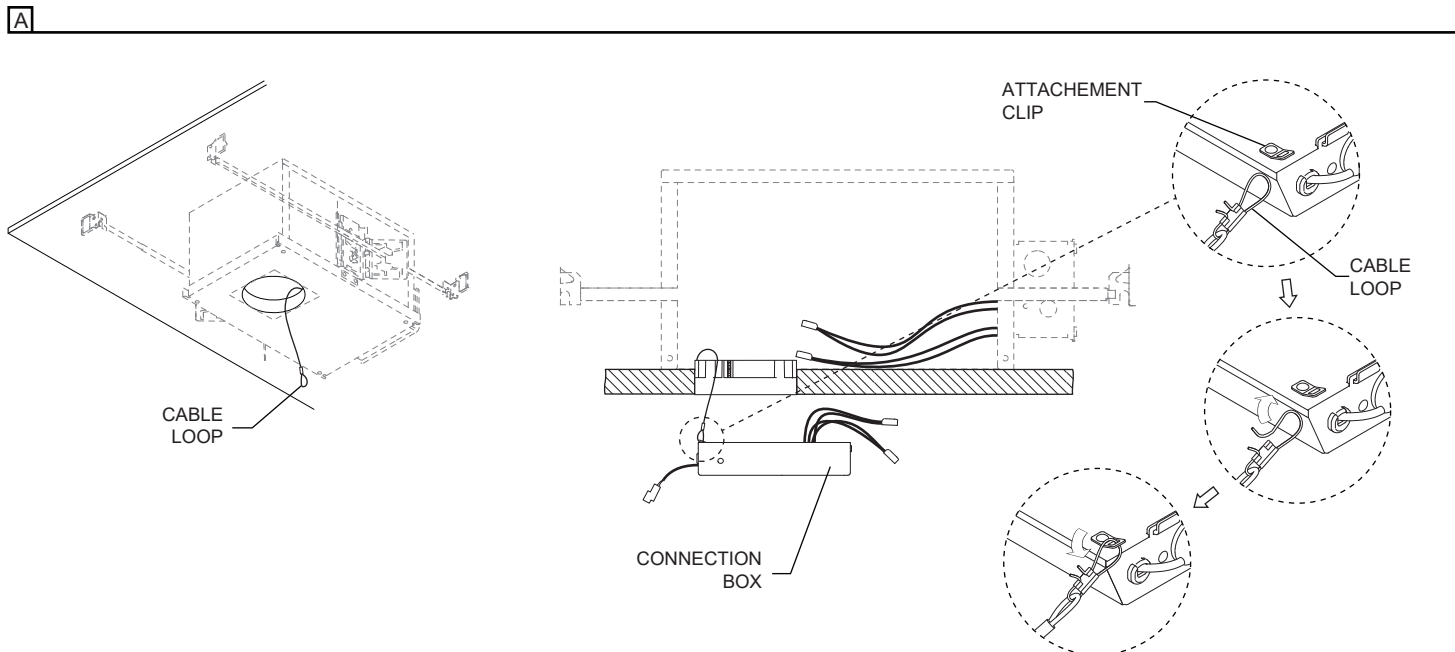
IMPORTANT - READ CAREFULLY BEFORE INSTALLING FIXTURE. RETAIN THESE INSTRUCTIONS FOR FUTURE REFERENCE.

THIS PRODUCT MUST BE INSTALLED IN ACCORDANCE WITH THE NATIONAL ELECTRICAL CODE AND ALL APPLICABLE LOCAL CODES, BY A PERSON FAMILIAR WITH THE CONSTRUCTION AND OPERATION OF THE PRODUCT, AND THE HAZARDS INVOLVED. PROPER GROUNDING IS REQUIRED FOR SAFETY.

⚠ DISCONNECT THE MAIN LINE BEFORE WIRING SECONDARY CONNECTORS.

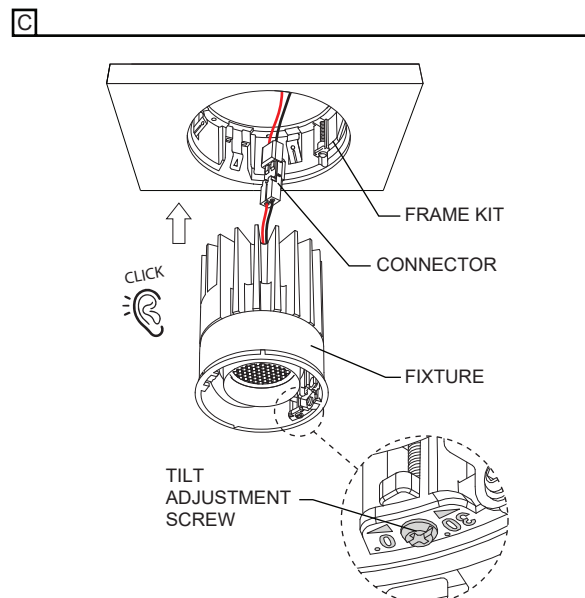
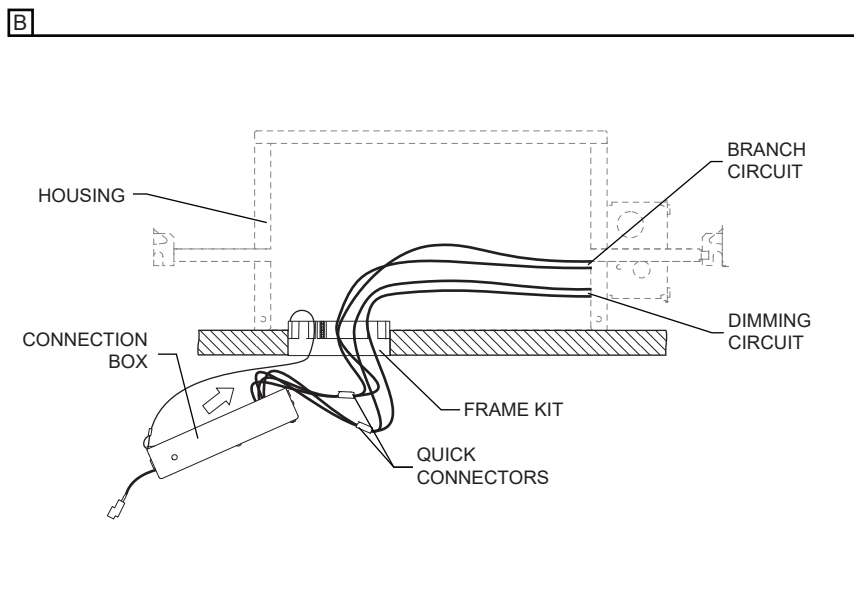
NEW CONSTRUCTION INSTALLATION WITH HOUSING (IC/CP) INTEGRAL DRIVER (120/277V) DIMMING TRIAC/ELV (LTE) / 0-10V (D10)

A- PASS THE CABLE LOOP THROUGH THE ATTACHEMENT CLIP OF THE CONNECTION BOX.

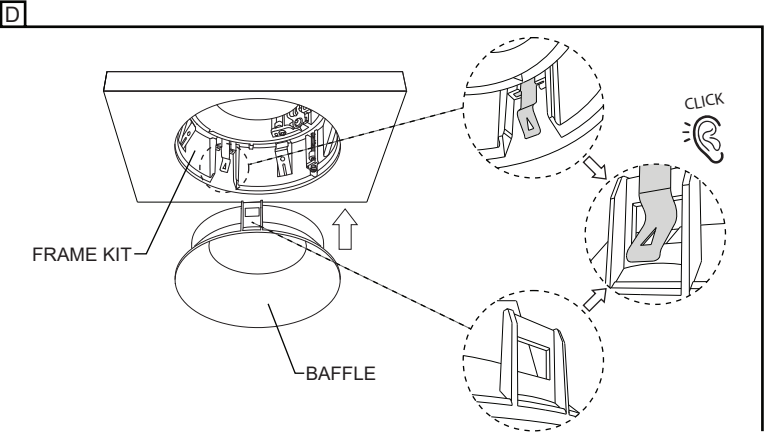


B- MAKE ALL CONNECTIONS USING QUICK CONNECTORS AND INSERT THE CONNECTION BOX THROUGH THE FRAME KIT. THE CONNECTION BOX MUST SETTLE ON THE HOUSING ONCE INSTALLED.

C- CONNECT FIXTURE AND INSERT THROUGH THE FRAME KIT UNTIL IT CLICKS IN PLACE. FOR ADJUSTABLE MODELS ONLY: TO ADJUST THE TILT ANGLE, USE THE TILT ADJUSTMENT SCREW IN THE FIXTURE.



D- INSTALL THE BAFFLE IN THE FRAME KIT.



RECOMMENDED LINE DIMMERS LIST

DIMMERS LIST RECOMMANDATION	
Manufacturer	Model
LUTRON DIVA	DVSTV-WH
LUTRON POWERPAK	RMJ-ECO32-DV-B