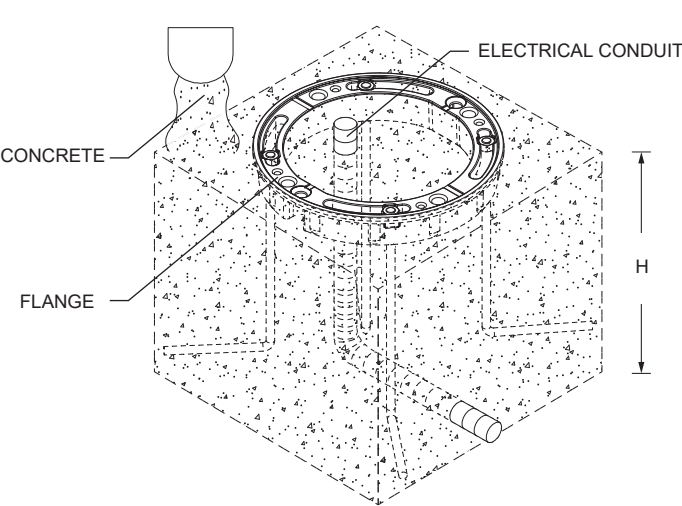


**IMPORTANT** - READ CAREFULLY BEFORE INSTALLING FIXTURE. RETAIN THESE INSTRUCTIONS FOR FUTURE REFERENCE.  
THIS PRODUCT MUST BE INSTALLED IN ACCORDANCE WITH THE NATIONAL ELECTRICAL CODE AND ALL APPLICABLE LOCAL CODES, BY A PERSON FAMILIAR WITH THE CONSTRUCTION AND OPERATION OF THE PRODUCT, AND THE HAZARDS INVOLVED. PROPER GROUNDING IS REQUIRED FOR SAFETY.

**GROUND INSTALLATION IN CONCRETE WITH FLANGE (S5301, S5200, S2119).  
INTEGRAL DRIVER (120V - 277V)**

- A- DIG A HOLE (**SEE DIMENSIONS BELOW**), PUT THE FLANGE AND ELECTRICAL CONDUIT INTO THE GROUND. POUR CONCRETE AND MAKE SURE IT IS LEVELED WITH THE FLANGE.
- \* **DEPENDING ON MODEL ORDERED, SEE DRAWING BELOW TO POSITION FLANGE FOR OPTIMAL BEAM ORIENTATION.**

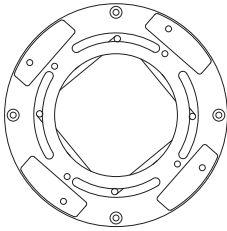
A



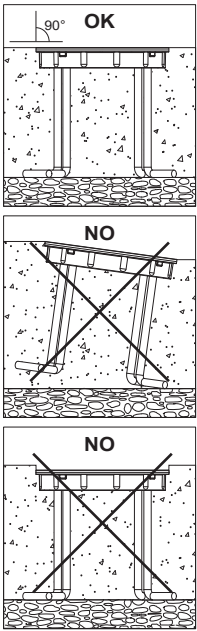
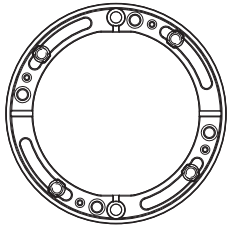
Model	Model Code	Flange code	Flange dimensions
MICROREEF	S5317, S5327, S5337, S5377	<b>S5301</b>	5 1/8" x 6 1/8" (130 x 155mm)
MINIREEF	S5240, S5243, S5253, S5263	<b>S5200</b>	7 1/2" x 8 7/8" (190 x 225mm)
REEF	S5247, S5257, S5267, S5297	<b>S2119</b>	10 1/16" x 8 7/8" (250 x 225mm)

**REEF**  
S5247, S5257, S5267, S5297

**MINIREEF**  
S5240, S5243, S5253, S5263

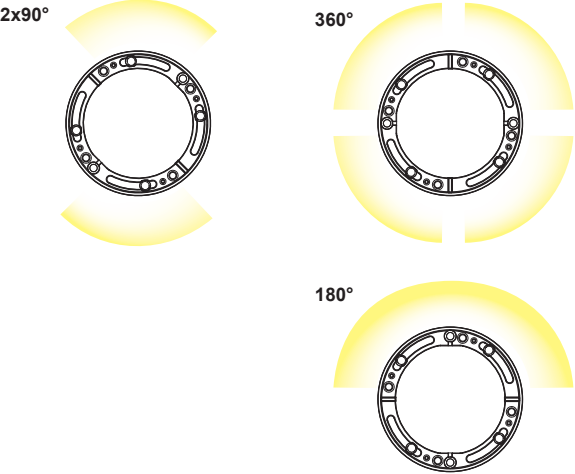


**MICROREEF**  
S5337, S5327, S5317, S5377

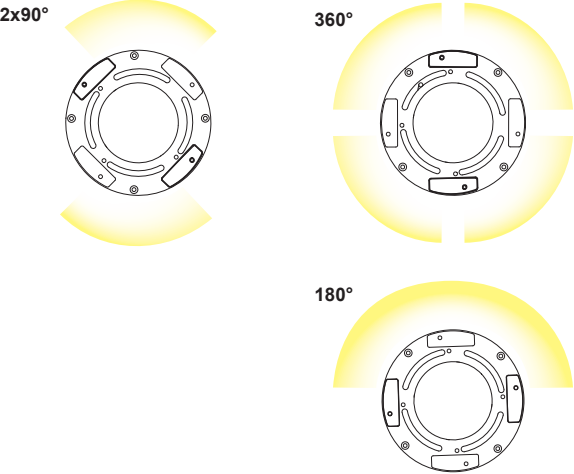


**LIGHT DIRECTION**

**MICROREEF**



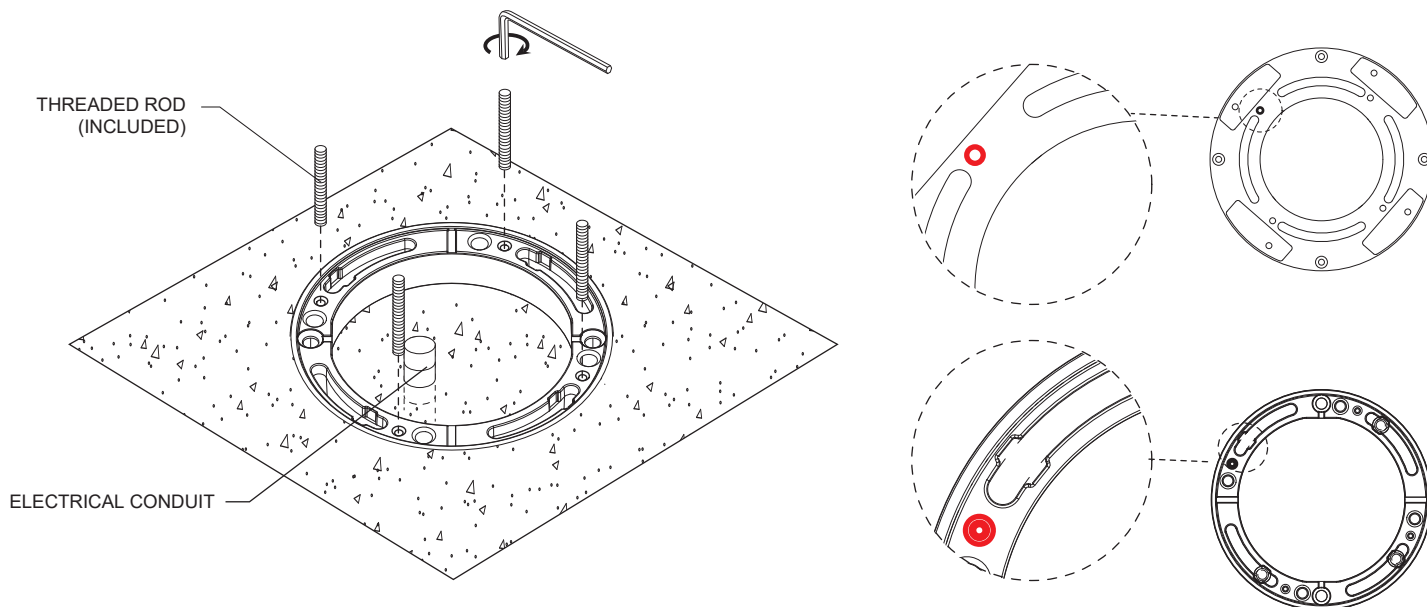
**REEF / MINIREEF**



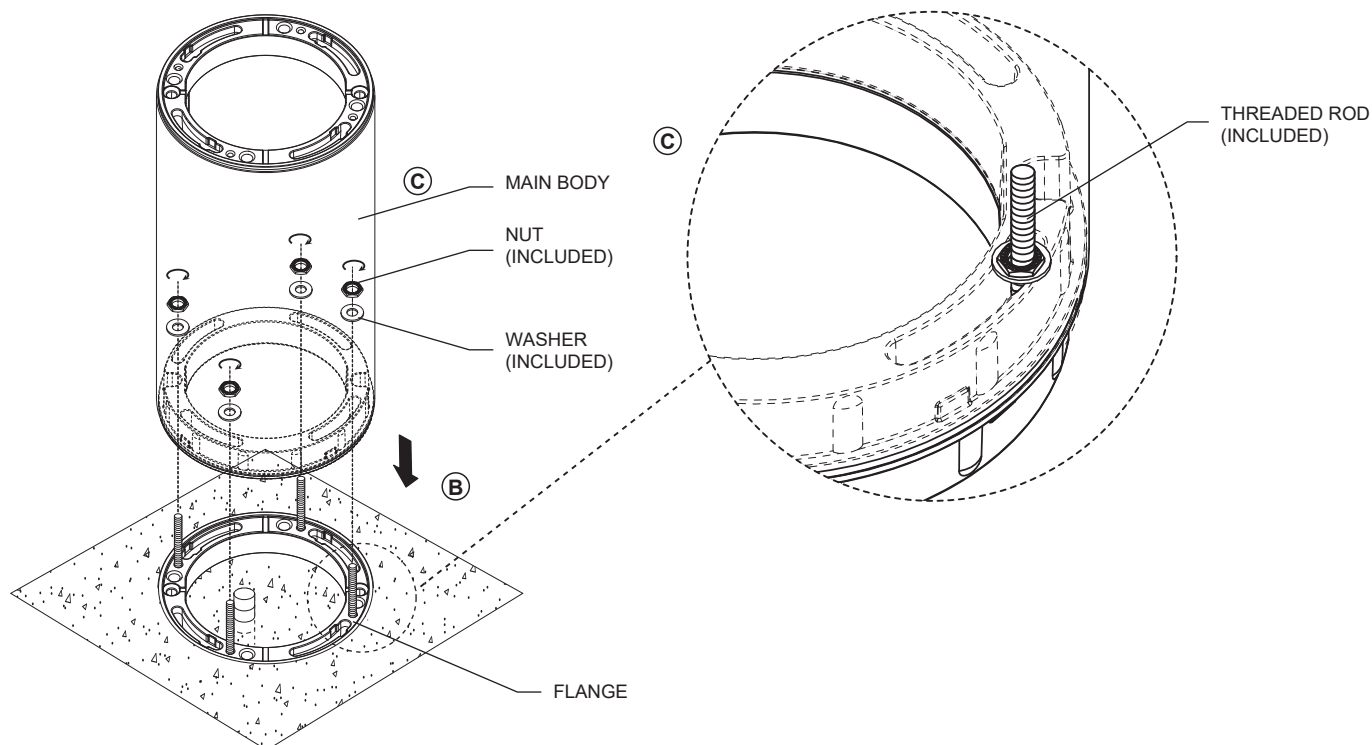
## BOLLARD INSTALLATION

- A- UNFASTEN THE (4) THREADED RODS (**INCLUDED**) AND SCREW THEM INTO THE FLANGE USING THE ALLEN KEY (**INCLUDED**).  
 B- LOWER THE MAIN BODY ON TOP OF THE FLANGE AND INSERT IT OVER THE THREADED RODS.  
 C- SECURE THE MAIN BODY TO THE FLANGE USING WASHERS AND NUTS (**INCLUDED**).

A



B + C



**MICROREEF HEAD INSTALLATION ON BOLLARD.  
INTEGRAL DRIVER (120V / 277V)**

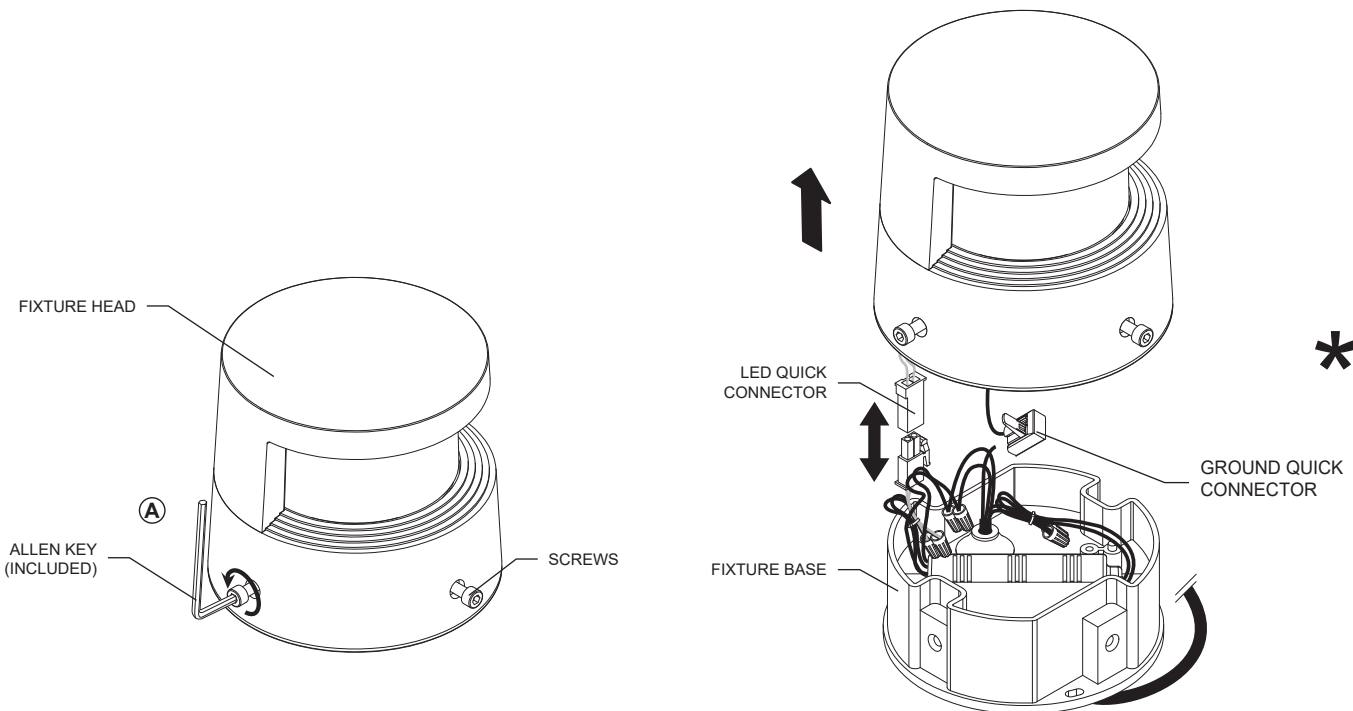
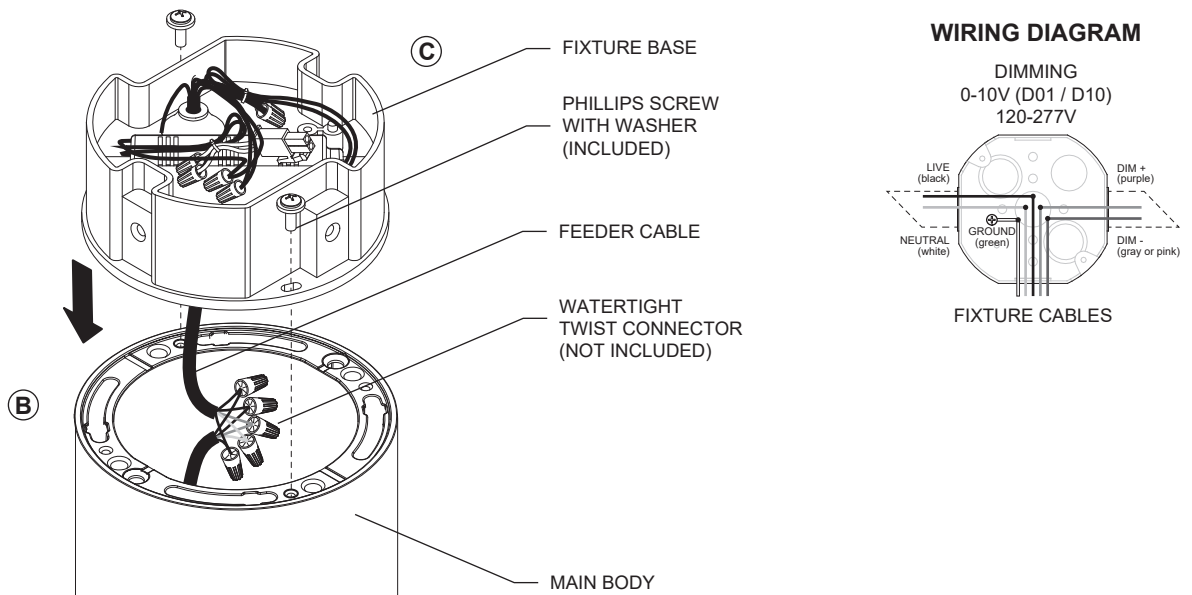
**⚠ DISCONNECT THE MAIN LINE BEFORE INSTALLATION TO AVOID ELECTRICAL SHOCK OR DAMAGE TO LED ARRAY.**

A- UNFASTEN THE FIXTURE HEAD (4) SCREWS WITH AN ALLEN KEY (**INCLUDED**) AND REMOVE IT.

\*BEFORE FULLY REMOVING THE FIXTURE HEAD, DISCONNECT THE LED AND GROUND QUICK CONNECTORS.

B- PASS THE FEEDER CABLE THROUGH THE MAIN BODY AND MAKE WIRE CONNECTIONS (**SEE WIRING DIAGRAM**) INSIDE A REMOTE JUNCTION BOX (**PROVIDED BY OTHERS**).

C- SCREW THE FIXTURE BASE TO THE FLANGE WITH THE (2) PHILLIPS SCREWS AND WASHERS (**INCLUDED**).

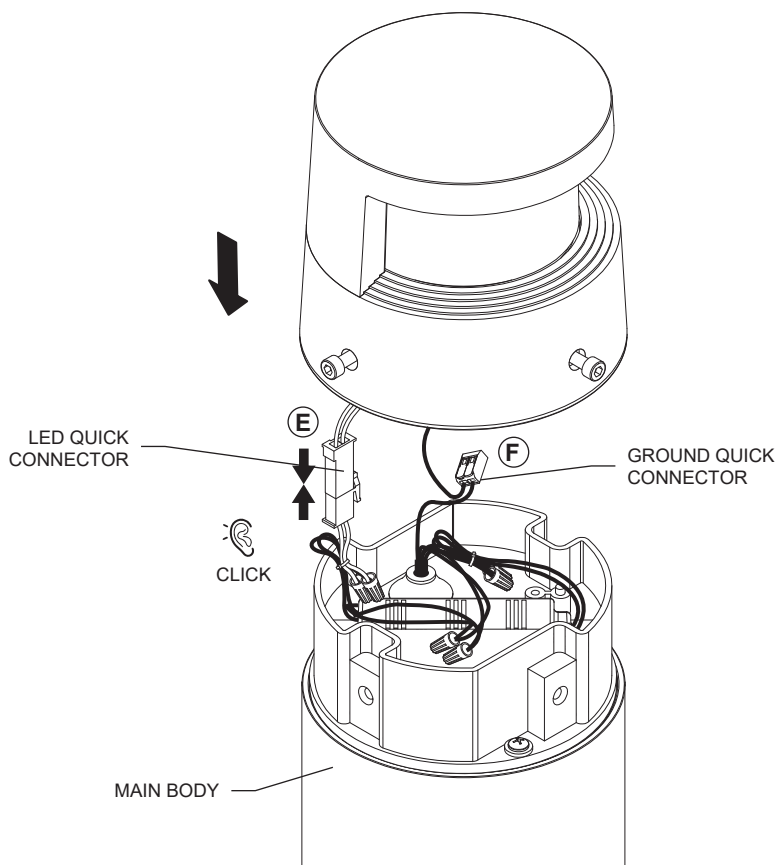
**A****B + C**

D- RECONNECT THE GROUND WIRES USING THE QUICK CONNECTOR.

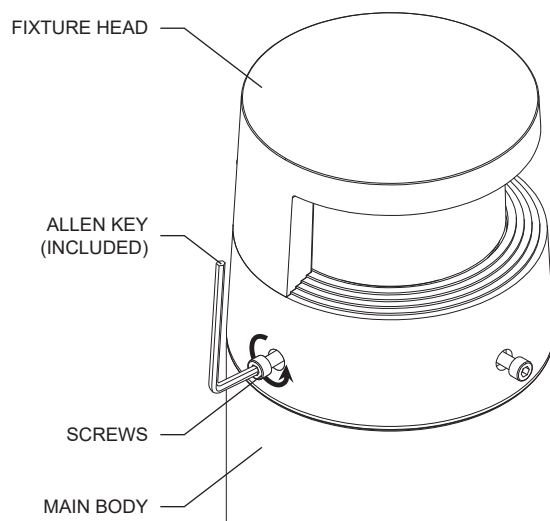
E- RECONNECT THE LED QUICK CONNECTOR.

F- FASTEN THE FIXTURE HEAD (4) SCREWS USING THE ALLEN KEY (INCLUDED).

D + E



F





**MINIREEF AND REEF HEAD INSTALLATION ON BOLLARD  
INTEGRAL DRIVER (120V / 277V)**

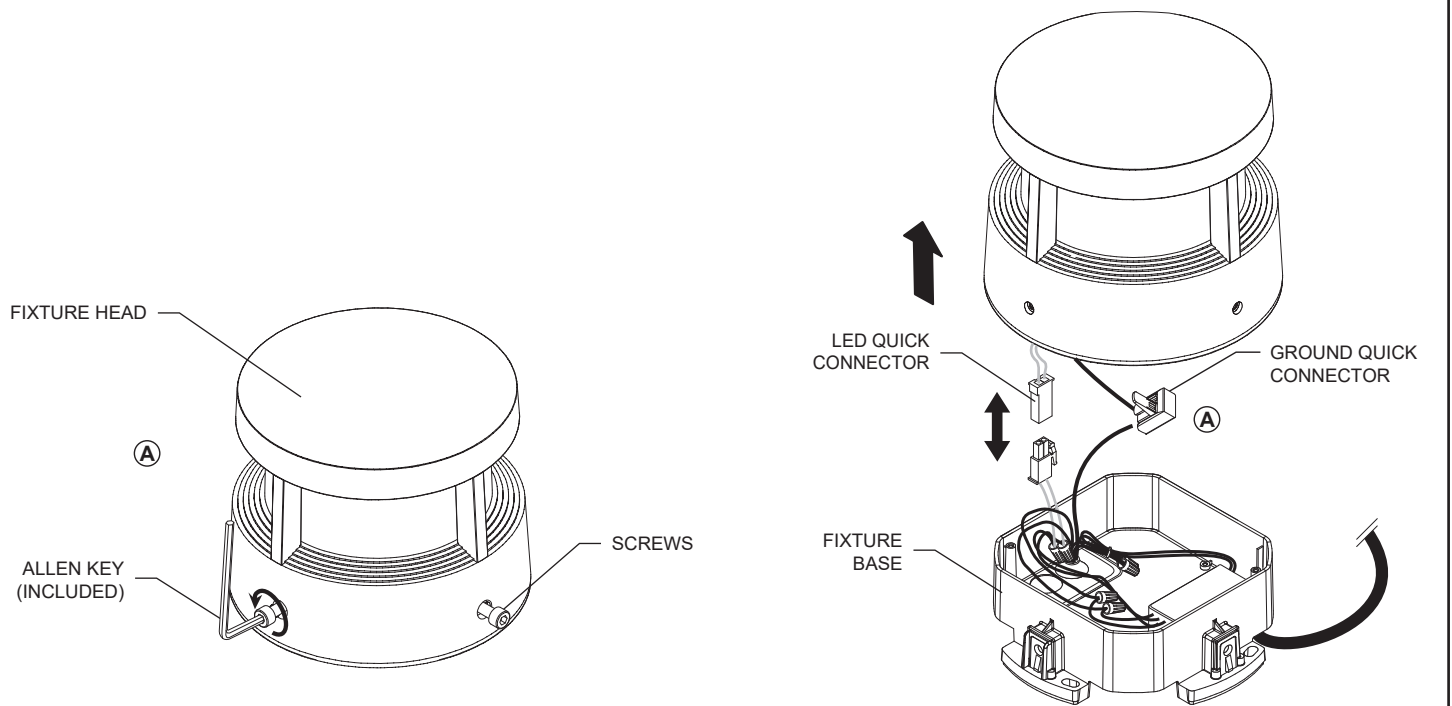
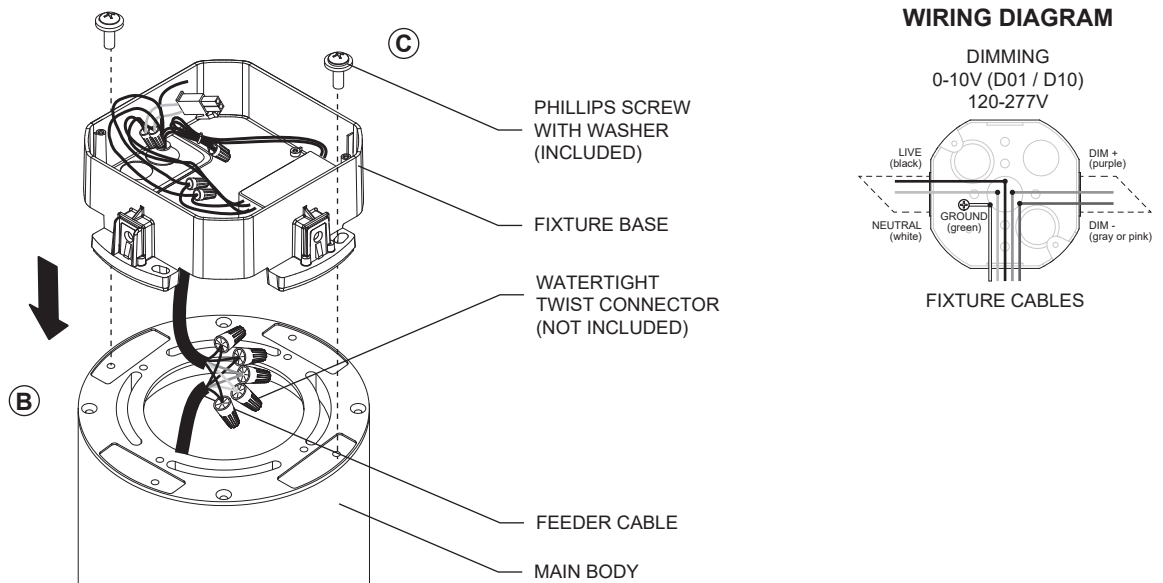
**⚠ DISCONNECT THE MAIN LINE BEFORE INSTALLATION TO AVOID ELECTRICAL SHOCK OR DAMAGE TO LED ARRAY.**

A- UNFASTEN THE FIXTURE HEAD (4) SCREWS WITH AN ALLEN KEY (**INCLUDED**) AND REMOVE IT.

\*BEFORE FULLY REMOVING THE FIXTURE HEAD, DISCONNECT THE LED AND GROUND QUICK CONNECTORS.

B- PASS THE FEEDER CABLE THROUGH THE MAIN BODY AND MAKE WIRE CONNECTIONS (**SEE WIRING DIAGRAM**) INSIDE A REMOTE JUNCTION BOX (**PROVIDED BY OTHERS**).

C- SCREW THE FIXTURE BASE TO THE FLANGE WITH THE (2) PHILLIPS SCREWS AND WASHERS (**INCLUDED**).

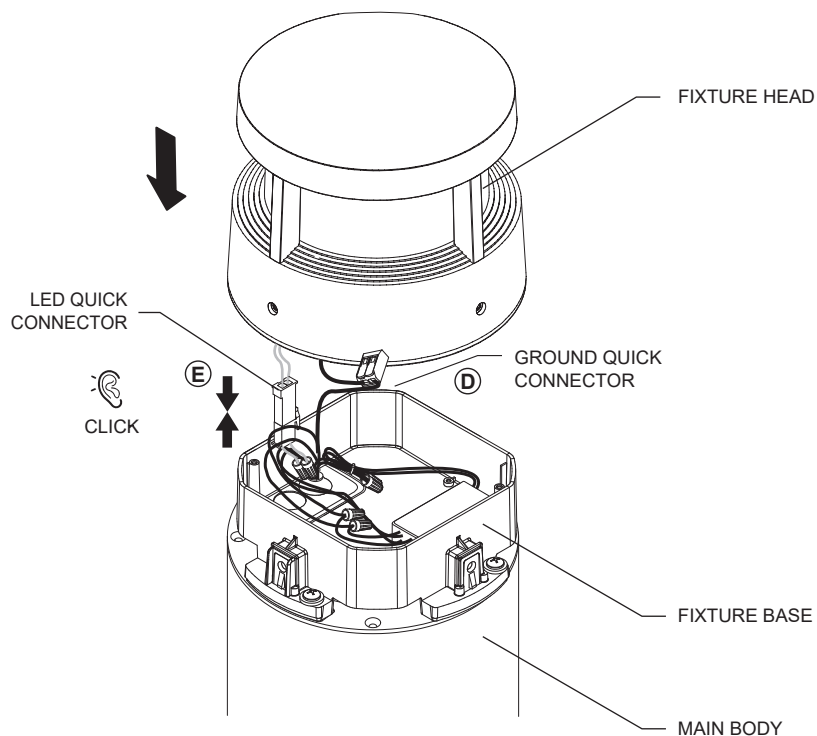
**A****B + C**

D- RECONNECT THE GROUND WIRES USING THE QUICK CONNECTOR.

E- RECONNECT THE LED QUICK CONNECTOR.

F- FASTEN THE FIXTURE HEAD (4) SCREWS USING THE ALLEN KEY (INCLUDED).

D + E



F

