

**IMPORTANT** - READ CAREFULLY BEFORE INSTALLING FIXTURE. RETAIN THESE INSTRUCTIONS FOR FUTURE REFERENCE.  
THIS PRODUCT MUST BE INSTALLED IN ACCORDANCE WITH THE NATIONAL ELECTRICAL CODE AND ALL APPLICABLE LOCAL CODES, BY A PERSON FAMILIAR WITH THE CONSTRUCTION AND OPERATION OF THE PRODUCT, AND THE HAZARDS INVOLVED. PROPER GROUNDING IS REQUIRED FOR SAFETY.

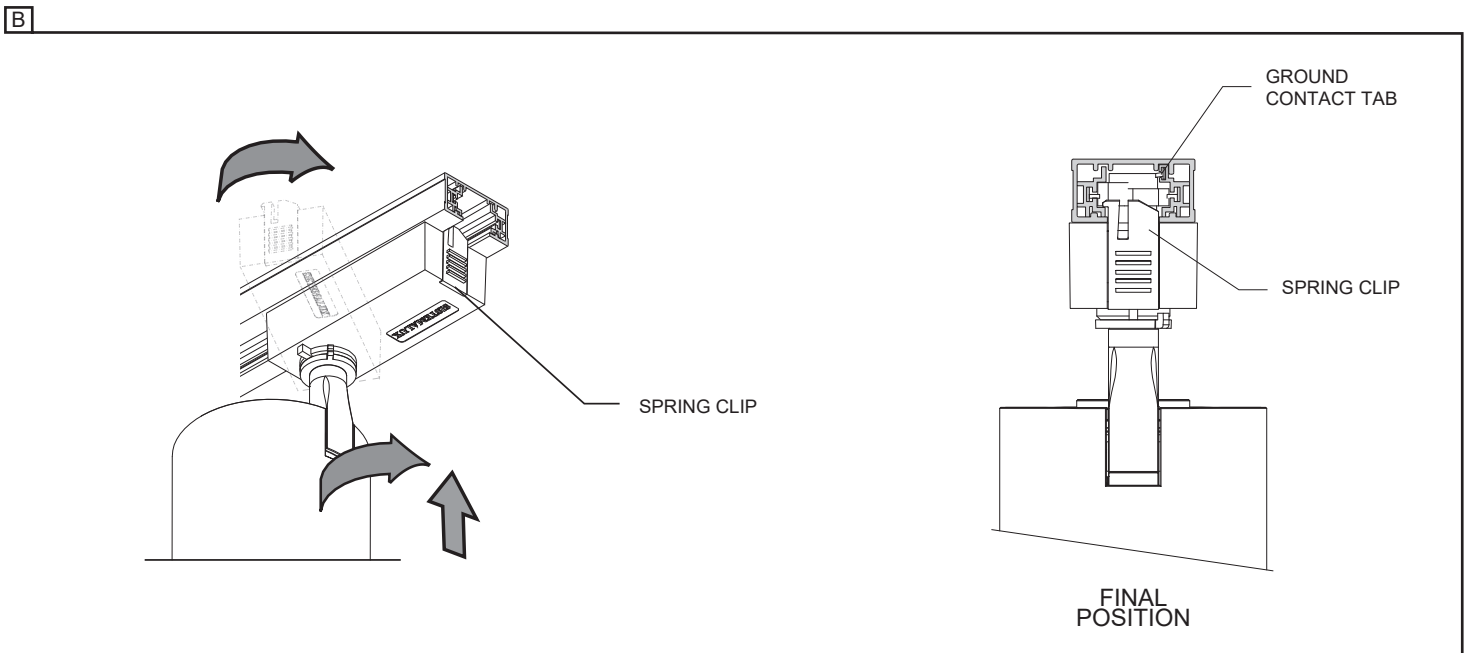
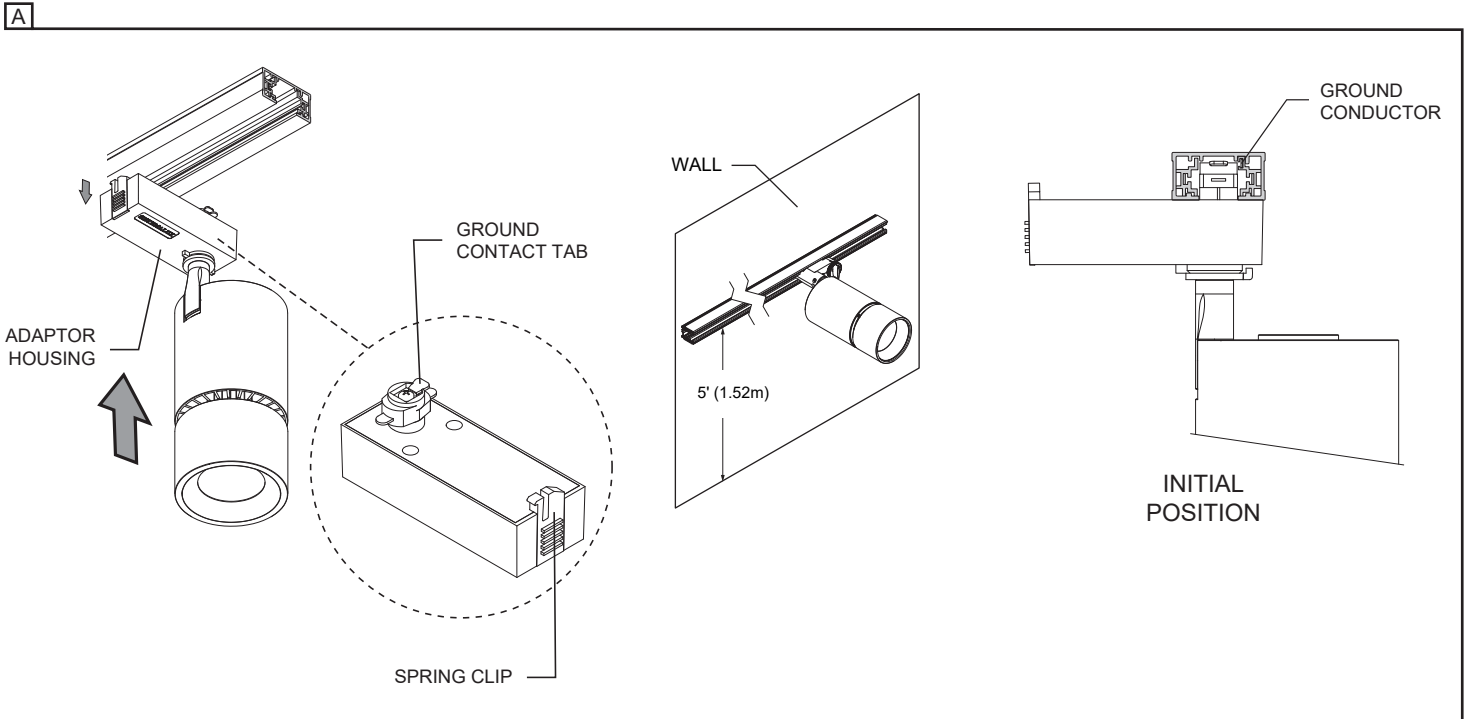
## INSTALLING PROJECTOR ON ONE CIRCUIT TRACK (CEILING OR WALL)

FOR USE WITH **SISTEMALUX 8000 SERIES, OR SISTEMALUX 8000-S1 SERIES** TRACK SYSTEM ONLY (120V).

A- INSERT THE TRACK ADAPTOR ON THE TRACK RESPECTING THE SAME DIRECTION AS SHOWN IN "A".

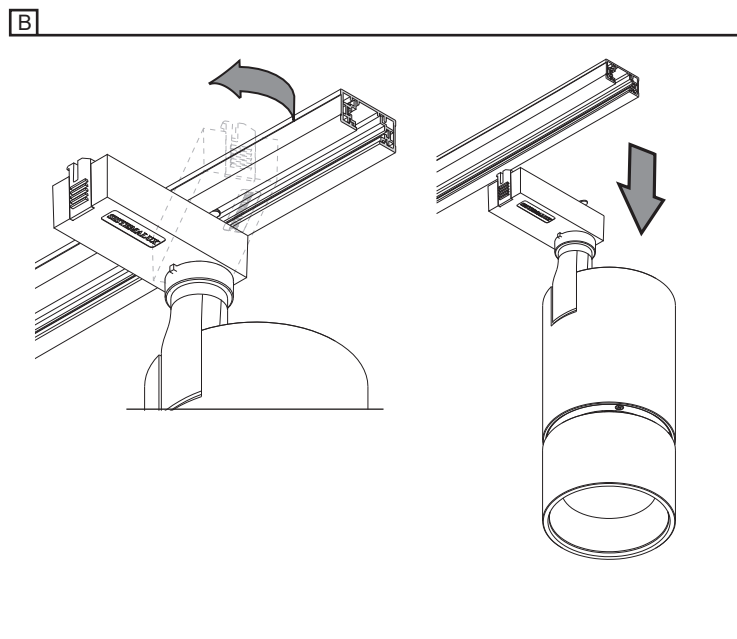
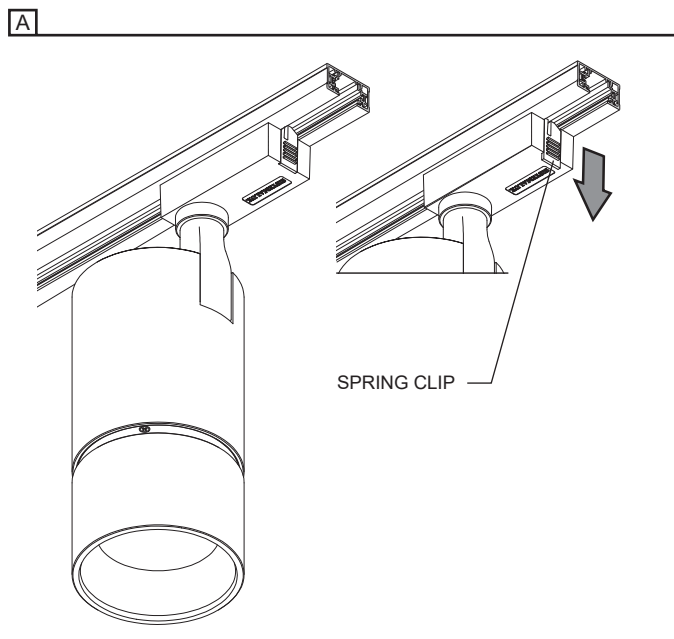
**FOR WALL INTALLATION, MAKE SURE THE TRACK IS INSTALLED 5 FEET FROM THE GROUND.**

B- LOCATE THE **GROUND CIRCUIT** OF THE TRACK. PUSH THE PROJECTOR INTO TRACK AND ROTATE THE TRACK ADAPTOR A QUARTER CLOCKWISE THE PROPER DIRECTION IN ORDER TO MAKE CONTACT WITH THE **GROUND CONTACT** OF THE TRACK ADAPTOR. SPRING CLIP HAVE TO BE IN THE TRACK SLOT FOR FINAL POSITION.



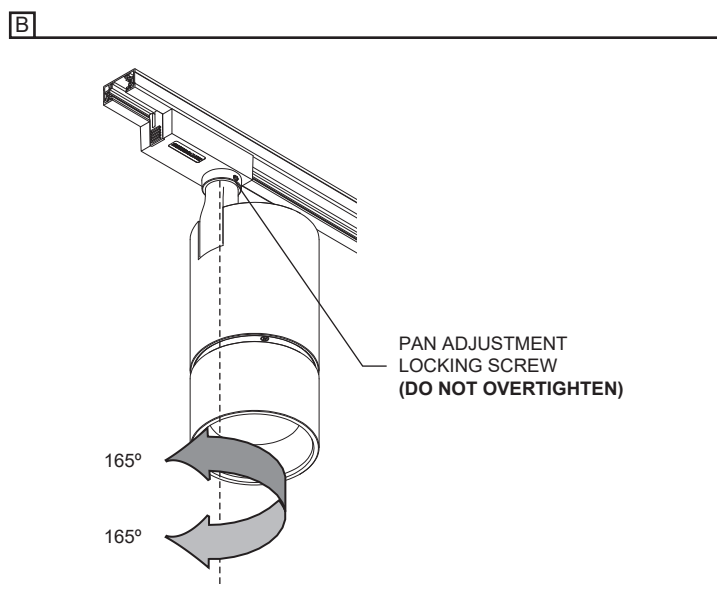
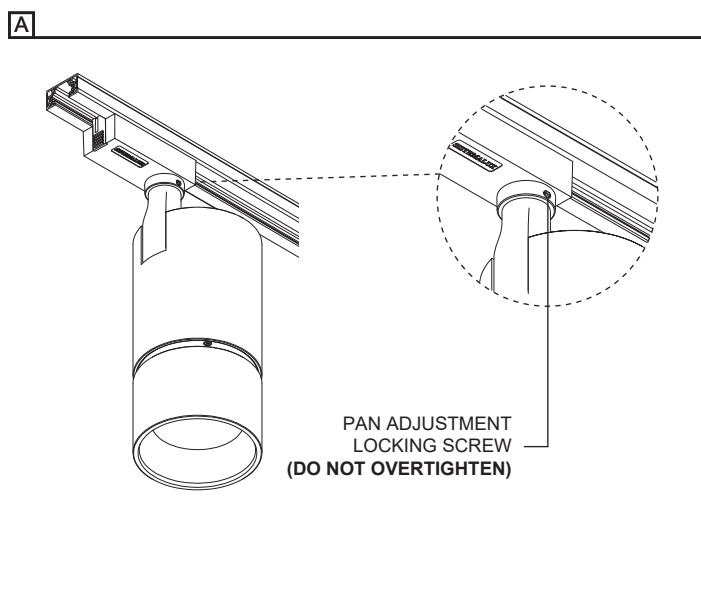
## REMOVING PROJECTOR FROM ONE CIRCUIT TRACK

- A- PULL DOWN THE TRACK ADAPTOR HOUSING TO UNLOCK IT FROM THE TRACK SLOT.  
B- HOLDING THE TRACK ADAPTOR HOUSING DOWN, ROTATE A QUARTER TURN IN ANY DIRECTION AND PULL DOWN THE PROJECTOR TO REMOVE IT FROM THE TRACK.



## PAN ANGLE POSITION

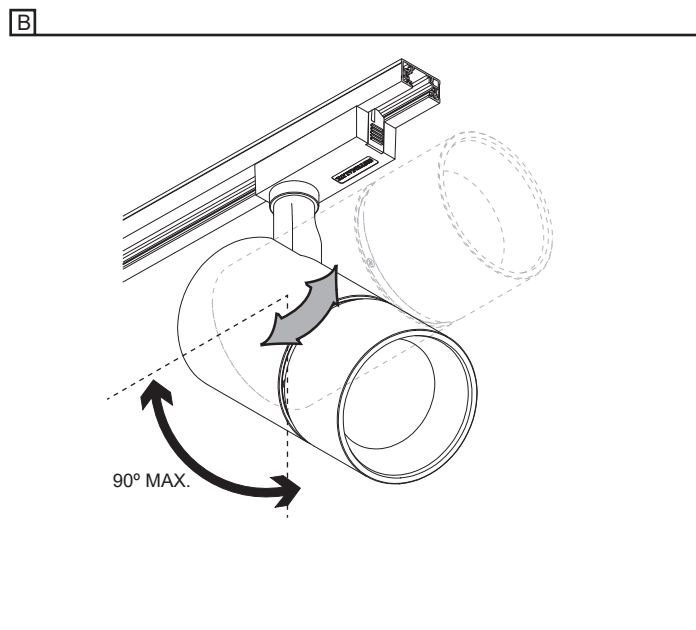
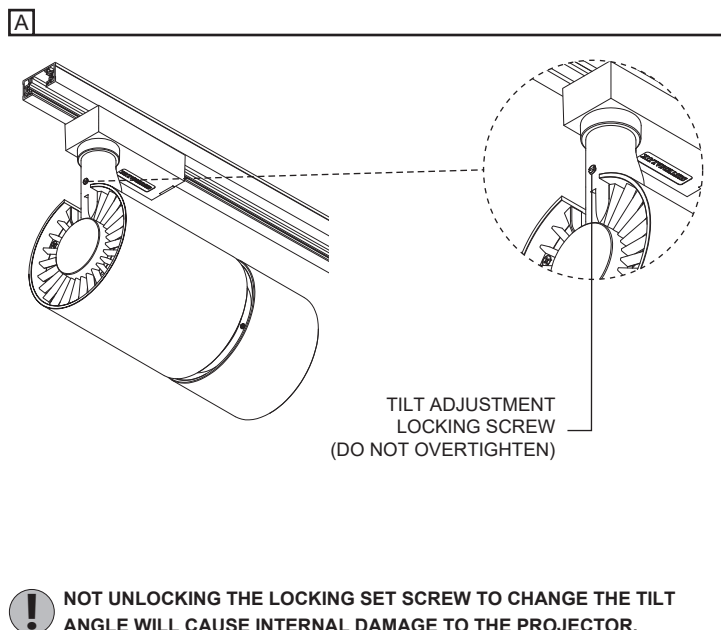
- A- LOOSEN THE PAN ADJUSTMENT LOCKING SCREW.  
B- SET THE DESIRED PAN POSITION (MAXIMUM OF 330° AXIAL ROTATION) AND LOCK THE POSITION WITH THE PAN ADJUSTMENT LOCKING SCREW, USING A FLATHEAD SCREWDRIVER.



## TILT ANGLE POSITION

A- LOOSEN THE TILT ADJUSTMENT LOCKING SCREW.

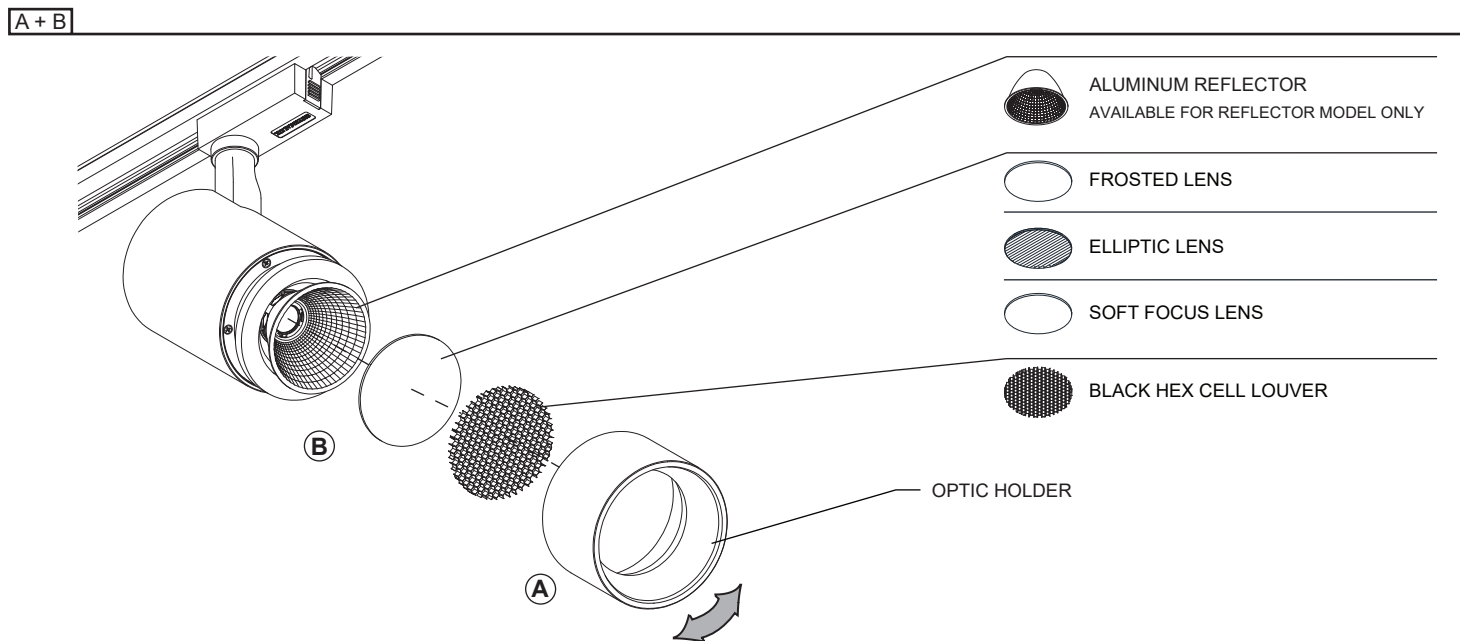
B- SET THE DESIRED TILT POSITION (MAXIMUM OF 90° AXIAL ROTATION) AND LOCK THE POSITION WITH THE TILT ADJUSTMENT LOCKING SCREW, USING A FLATHEAD SCREWDRIVER.



## REPLACING OPTIC FOR REFLECTOR MODELS

A- UNSCREW THE OPTIC HOLDER TO ACCESS THE REFLECTOR.

B- REPLACE THE REFLECTOR AND RE-INSTALL THE OPTIC HOLDER BACK IN PLACE.



## ACCESSORIES

- A- UNSCREW THE OPTIC HOLDER  
B- PLACE ACCESSORY BETWEEN THE OPTIC HOLDER AND THE ACCESSORY HOLDER  
C- RE-INSTALL THE OPTIC HOLDER BACK IN PLACE.

A + B + C

