

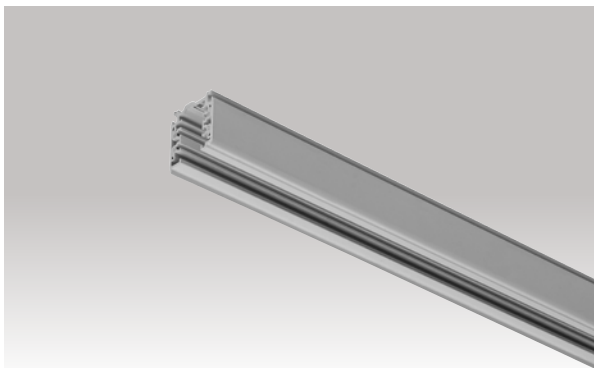
2 CIRCUIT TRACK

SPECIFICATION SHEET

PAGE: 1 OF 3

Project name:

Type:



General information

Mounting: Surface mount or suspended.

Body: Extruded aluminum professional track.

Electrical: 120V or 277V with two circuits, 20A per circuit.
2 hot, 2 neutral. Line voltage dimming capability.

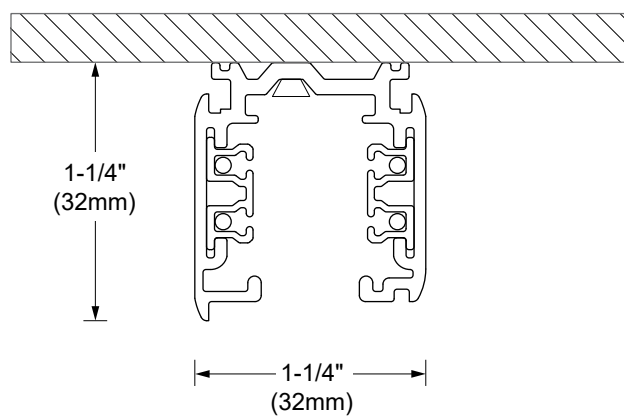
Finish:

Track: Anodized natural aluminum, white or black painted.

Accessories: White, black or gray painted.

Warranty: 1 year limited warranty.

Certification: cULus listed for dry location.



SECTION VIEW

Project name: _____

Type: _____

ELECTRICAL COMPONENTS (TO BE ORDERED SEPARATELY)

Feedable connexions

- ☐ 120V ☐ 277V
☐ 01 - White ☐ 02 - Black ☐ 10 - Gray

☐ **I0175** - Live end feed



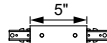
☐ **I0176** - Live end feed mirror



☐ **I0177** - Linear coupler



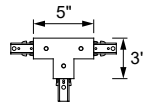
☐ **I0178** - Direct coupler



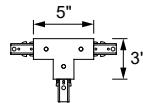
☐ **I0179** - L-Connector adjustable polarity



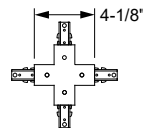
☐ **I0180** - T-Connector right polarity



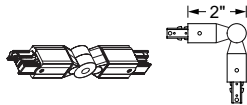
☐ **I0181** - T-Connector left polarity



☐ **I0182** - X-Connector



☐ **I0183** - Adjustable connector



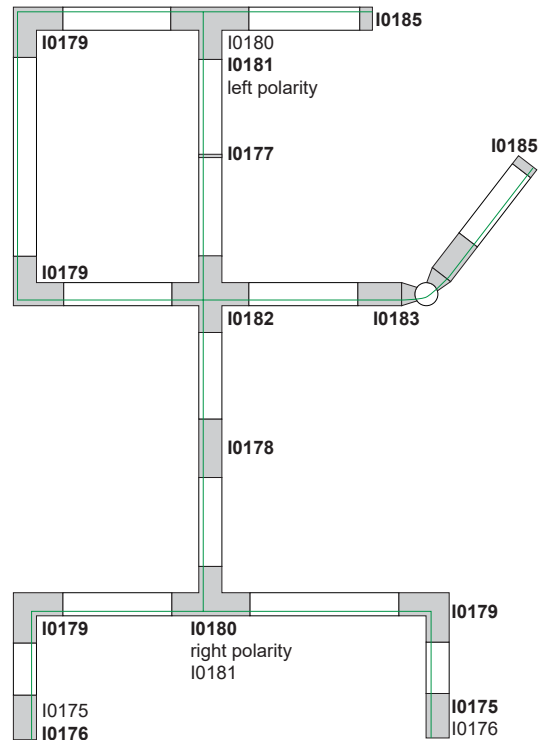
☐ **I0184** - Outlet box cover



☐ **I0185** - End cap



Example of configuration



Track is polarized and is manufactured with identifying ridge (green line on diagrams). Refer to these diagrams to ensure proper connector selection.

Project name: _____

Type: _____

SURFACE MOUNTING (TO BE ORDERED SEPARATELY)

Track mounting clip

☐ 01 - White ☐ 02 - Black

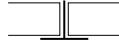
☐ **I0201** - For T-BAR 15/16"

Recommended for Tegular edge tile



☐ **I0202** - For T-BAR 15/16"

Recommended for Square edge tile



☐ **I0205** - For dry wall or threaded rod 1/4"-20
(Rod supplied by others)



ACCESSORIES (TO BE ORDERED SEPARATELY)

☐ **I0186** - Conductor bending tool
(required during field length cutting)



Cover

☐ 01 - White ☐ 02 - Black ☐ 10 - Gray

☐ **I0191** - Plastic cover to hide track mounting clip when using stem, cable or rod.



SUSPENSION MOUNTING (TO BE ORDERED SEPARATELY)

Painted finish

☐ 01 - White⁽¹⁾ ☐ 02 - Black⁽¹⁾ ☐ 10 - Gray⁽¹⁾
☐ 21 - Black/White⁽²⁾ ☐ 20 - Gray/White⁽²⁾

Stem kit

☐ **I0208-12** - 12" stem

☐ **I0208-18** - 18" stem

☐ **I0208-24** - 24" stem

☐ **I0208-48** - 48" stem

Includes canopy, stem, 5'5" power cable and track mounting clip



☐ **I0204-12** - 12" stem

☐ **I0204-18** - 18" stem

☐ **I0204-24** - 24" stem

☐ **I0204-48** - 48" stem

Includes GWB anchor, stem and track mounting clip



Aircraft cable kit

☐ **I0216** - Canopy kit

Includes canopy, 5'-5" aircraft cable, 5'-5" power cable and 6" stem with track mounting clip



☐ **I0212** - Anchor kit

Includes GWB anchor, 5'-5" aircraft cable and 6" stem with track mounting clip



Canopy

☐ **I0220** - Canopy with 5'-5" power cable



⁽¹⁾ Canopy or anchor will match the kit color

⁽²⁾ Kit includes a default white painted canopy or anchor

ORDERING INFO

MODEL	VOLTAGE	FINISH
<input type="radio"/> I0166 - 4'L	<input type="radio"/> 120 - 120V	<input type="radio"/> 01 - White
<input type="radio"/> I0167 - 8'L	<input type="radio"/> 277 - 277V	<input type="radio"/> 02 - Black
<input type="radio"/> I0168 - 12'L*		<input type="radio"/> 12 - Aluminum

* 12' model (I0168) supplied in two pieces: 8' + 4'