

Proprietary industry leading linear LED platform with superior thermal management that yields reliable color consistency and output performance. Available as single module or continuous runs. Suitable for interior applications where general lighting is desired.

**Luminaire characteristic:**

**Power input:** 5, 7.5, 10.5 or 20W/ft  
**Lumens:** 350, 550, 700 or 1400lm/ft (3000K,85CRI)  
**Luminaire efficacy:** Up to 75lm/W

**Source:** Osram Duris®E5 JDSR (LM-80 tested)  
3000K : 85CRI typical (min>80CRI)  
3500K : 85CRI typical (min>80CRI)  
4000K : 85CRI typical (min>80CRI)

**Lumen maintenance:** 70% of initial lumens at 100 000 hours (L70) (LM-79 tested).

**Optic:** General lighting

**Material:** Body: Extruded aluminum  
End caps: Die-cast aluminum  
Reflector: Whitelite 92% of reflectivity  
Diffuser: PMMA frosted acrylic (For sections longer than 8' to a maximum of 24', the frosted diffuser is delivered rolled up in a separate box).

**Mounting:** Recessed trim installation (with flange) using included brackets for drywall, wood or other rigid ceiling panels. Recessed trimless installation using trimless frame kit for drywall. Not suitable for grid ceilings.

**Electrical:** Integral high efficiency electronic power supply, rated 100 000 hours, 120-277V.

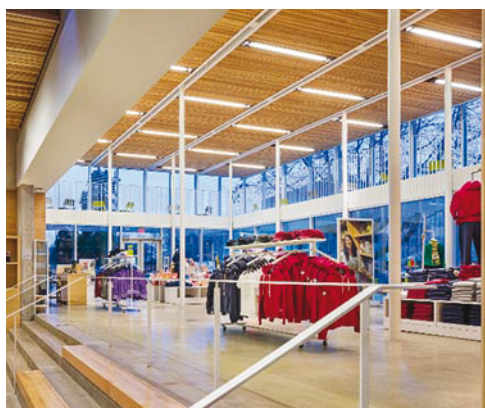
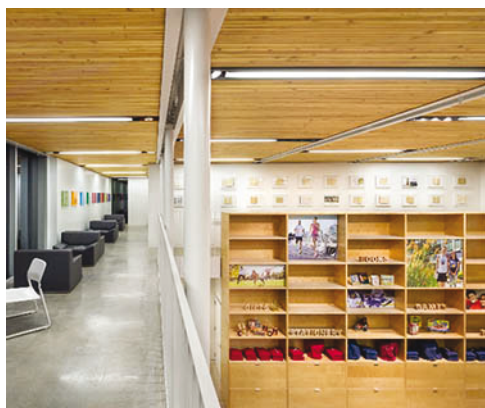
**Dimming:** 0-10V (Down to 15%),  
Lutron Hi Lume® 1% EcoSystem™ (Soft-on, Fade to Black).

**Finish:** White RAL9003 or gray RAL9006 painted finish.

**Warranty:** 5 year limited warranty.

**Ratings:** IP20

**Certification:** cULus listed for damp location. Interior use only.



**ORDERING INFO**

- - - **- F - UNV -** -  
FIXTURE

TRIMLESS FRAME KIT

**MODEL**

- 8602** - Recessed trim (with flange)       **8603** - Recessed trimless

**LENGTH**

Refer to configurations table on page 2.

**OUTPUT**

- BO** - Base output       **MO** - Medium output       **HO** - High output       **VHO** - Very high output

**LED**

- 830** - 3000K, 85CRI       **835** - 3500K, 85CRI       **840** - 4000K, 85CRI

**OPTIC**

- F** - Frosted

**VOLTAGE**

- UNV** - 120-277V

**FINISH**

- 01** - White       **10** - Gray

**DIMMING**

- D10** - 0-10V (down to 15%)       **D2B** - Lutron Hi Lume® 1% EcoSystem™ (Soft-on, Fade to Black)

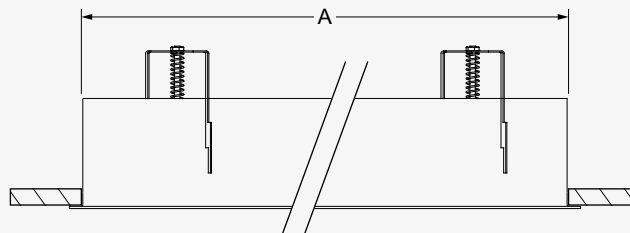
**MOUNTING**

**TRIM (8602)**

**Clearance:** 6<sup>3</sup>/<sub>8</sub>" (162mm)  
**Ceiling thickness:** 1/8" to 1<sup>3</sup>/<sub>8</sub>" (3mm - 35mm)

Nominal length	Cut-out dimension (A)
02	4 <sup>1</sup> / <sub>2</sub> x 23 <sup>5</sup> / <sub>8</sub> " (114 x 600mm)
03	4 <sup>1</sup> / <sub>2</sub> x 35 <sup>1</sup> / <sub>2</sub> " (114 x 902mm)
04	4 <sup>1</sup> / <sub>2</sub> x 47 <sup>1</sup> / <sub>4</sub> " (114 x 1200mm)
06	4 <sup>1</sup> / <sub>2</sub> x 70 <sup>1</sup> / <sub>4</sub> " (114 x 1784mm)
08	4 <sup>1</sup> / <sub>2</sub> x 93 <sup>5</sup> / <sub>8</sub> " (114 x 2378mm)
12	4 <sup>1</sup> / <sub>2</sub> x 140 <sup>1</sup> / <sub>4</sub> " (114 x 3562mm)
16	4 <sup>1</sup> / <sub>2</sub> x 186 <sup>5</sup> / <sub>8</sub> " (114 x 4747mm)
24	4 <sup>1</sup> / <sub>2</sub> x 280 <sup>5</sup> / <sub>8</sub> " (114 x 7115mm)

The luminaire runs can be manufactured in most lengths with 01 feet increments.



**TRIMLESS (8603)**

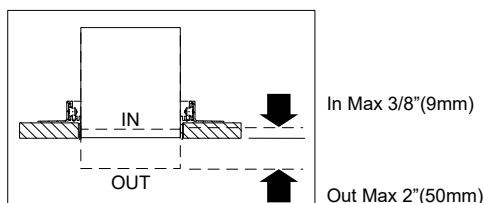
**Clearance:** 6<sup>3</sup>/<sub>8</sub>" (162mm)  
**Ceiling thickness:** 5/8" (16mm)



Trimless frame kit	Nominal length	Frame kit dimension (B x C x D)	Cut-out dimension (E)
7702	02	7 <sup>7</sup> / <sub>8</sub> " x 27" x 1 <sup>1</sup> / <sub>8</sub> " (200 x 686 x 41mm)	4 <sup>5</sup> / <sub>8</sub> " x 24 <sup>1</sup> / <sub>8</sub> " (117 x 613mm)
7703	03	7 <sup>7</sup> / <sub>8</sub> " x 38 <sup>5</sup> / <sub>8</sub> " x 1 <sup>1</sup> / <sub>8</sub> " (200 x 987 x 41mm)	4 <sup>5</sup> / <sub>8</sub> " x 36" (117 x 914mm)
7704	04	7 <sup>7</sup> / <sub>8</sub> " x 50 <sup>5</sup> / <sub>8</sub> " x 1 <sup>1</sup> / <sub>8</sub> " (200 x 1286 x 41mm)	4 <sup>5</sup> / <sub>8</sub> " x 47 <sup>3</sup> / <sub>4</sub> " (117 x 1213mm)
7706	06	7 <sup>7</sup> / <sub>8</sub> " x 72" x 1 <sup>1</sup> / <sub>8</sub> " (200 x 1829 x 41mm)	4 <sup>5</sup> / <sub>8</sub> " x 70 <sup>3</sup> / <sub>4</sub> " (117 x 1797mm)
7708	08	7 <sup>7</sup> / <sub>8</sub> " x 97 <sup>1</sup> / <sub>8</sub> " x 1 <sup>1</sup> / <sub>8</sub> " (200 x 2467 x 41mm)	4 <sup>5</sup> / <sub>8</sub> " x 94 <sup>1</sup> / <sub>8</sub> " (117 x 2391mm)
7712	12	7 <sup>7</sup> / <sub>8</sub> " x 143 <sup>5</sup> / <sub>8</sub> " x 1 <sup>1</sup> / <sub>8</sub> " (200 x 3654 x 41mm)	4 <sup>5</sup> / <sub>8</sub> " x 140 <sup>5</sup> / <sub>8</sub> " (117 x 3578mm)
7716	16	7 <sup>7</sup> / <sub>8</sub> " x 190 <sup>5</sup> / <sub>8</sub> " x 1 <sup>1</sup> / <sub>8</sub> " (200 x 4836 x 41mm)	4 <sup>5</sup> / <sub>8</sub> " x 187 <sup>5</sup> / <sub>8</sub> " (117 x 4759mm)
7724	24	7 <sup>7</sup> / <sub>8</sub> " x 283 <sup>1</sup> / <sub>2</sub> " x 1 <sup>1</sup> / <sub>8</sub> " (200 x 7201 x 41mm)	4 <sup>5</sup> / <sub>8</sub> " x 280 <sup>5</sup> / <sub>8</sub> " (117 x 7122mm)

The luminaire runs can be manufactured in most lengths with 01 feet increments.

**TRIMLESS SEMI-RECESSED MOUNTING OPTION**



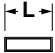




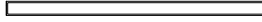


**FEED INFORMATION**

Maximum fixture length per single feed (nominal length):  
**0-10V dimming:** 40' (20' for VHO version)  
**D2B dimming:** 56' (28' for VHO version)

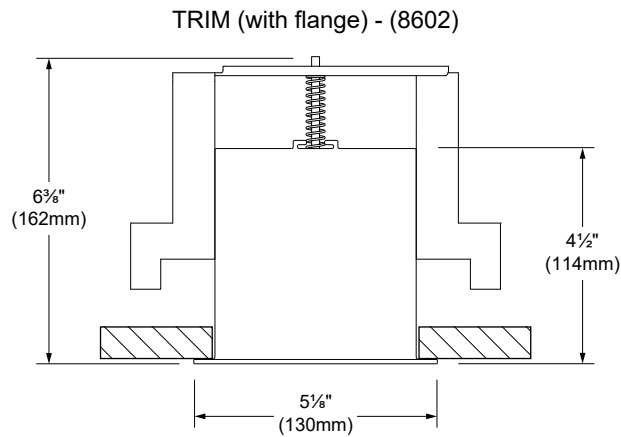
Main feed is located at the beginning of the first section. For longer fixtures subsequent feeds are needed. The feeds are located at the beginning of the next following section

**LENGTH**

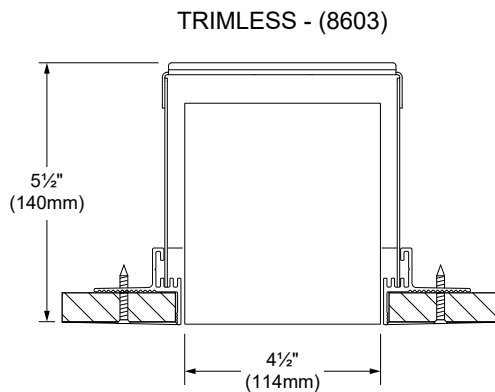
The luminaire runs can be manufactured in most lengths with 01 feet increments.

NOMINAL LENGTH	ACTUAL LENGTH
2'	 Trim: 24 <sup>3</sup> / <sub>8</sub> " (619mm) Trimless: 23 <sup>3</sup> / <sub>8</sub> " (594mm)
3'	 Trim: 36 <sup>1</sup> / <sub>4</sub> " (921mm) Trimless: 35 <sup>1</sup> / <sub>4</sub> " (895mm)
4'	 Trim: 48" (1219mm) Trimless: 47" (1194mm)
6'	 Trim: 71" (1803mm) Trimless: 70" (1778mm)
8'	 Trim: 94 <sup>1</sup> / <sub>2</sub> " (2400mm) Trimless: 93 <sup>1</sup> / <sub>2</sub> " (2375mm)
12'	 Trim: 141 <sup>1</sup> / <sub>8</sub> " (3597mm) Trimless: 140 <sup>1</sup> / <sub>8</sub> " (3559mm)
16'	 Trim: 187 <sup>7</sup> / <sub>8</sub> " (4766mm) Trimless: 186 <sup>5</sup> / <sub>8</sub> " (4740mm)
24'	 Trim: 280 <sup>5</sup> / <sub>8</sub> " (7134mm) Trimless: 279 <sup>3</sup> / <sub>8</sub> " (7109mm)

**DIMENSION**



SIDE VIEW



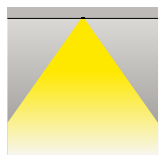
SIDE VIEW

**LED COLOR FIDELITY DATA**

CCT	R1	R2	R3	R4	R5	R6	R7	R8	R9	R10	R11	R12	R13	R14	R15	Rf	Rg	Melanopic ratio
3000K	80	88	95	82	80	84	85	62	10	72	82	67	82	97	73	83	99	0.478
3500K	82	89	95	84	83	86	86	65	13	75	85	71	84	97	75	85	99	0.578
4000K	84	90	94	85	85	87	87	69	21	77	85	70	86	97	79	86	98	0.689

**PHOTOMETRIC DATA**

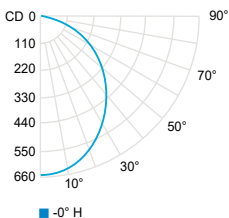
Photometric performance is measured at an accredited independent laboratory in accordance with IESNA LM-79. Visit [sistemalux.com](http://sistemalux.com) for complete photometric data.



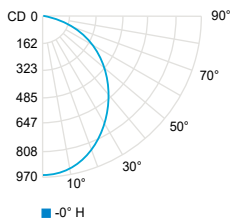
CCT (K)	CRI	OUTPUT	LOAD (W/ft)	LUMENS (lm/ft)	EFFICACY (lm/W)	MODELS
3000K	85	BO	5W/ft	395	75	8602-XX-BO830
		MO	7.5W/ft	585	75	8602-XX-MO830
		HO	10.5W/ft	745	70	8602-XX-HO830
		VHO	20W/ft	1460	70	8602-XX-VHO830

\*USE MULTIPLIER TABLE FOR OTHER CCT AND CRI OUTPUT DATA

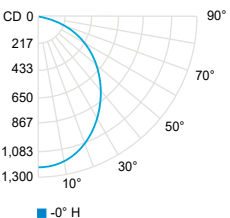
3000K - 85CRI - BO - 4'



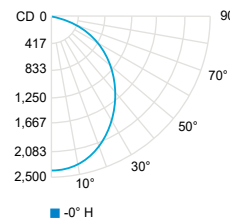
3000K - 85CRI - MO - 4'



3000K - 85CRI - HO - 4'



3000K - 85CRI - VHO - 4'



CCT options	3000K	3500K	4000K
CRI options	85CRI	85CRI	85CRI
<b>Multiplier</b>	<b>1</b>	<b>1.09</b>	<b>1.19</b>