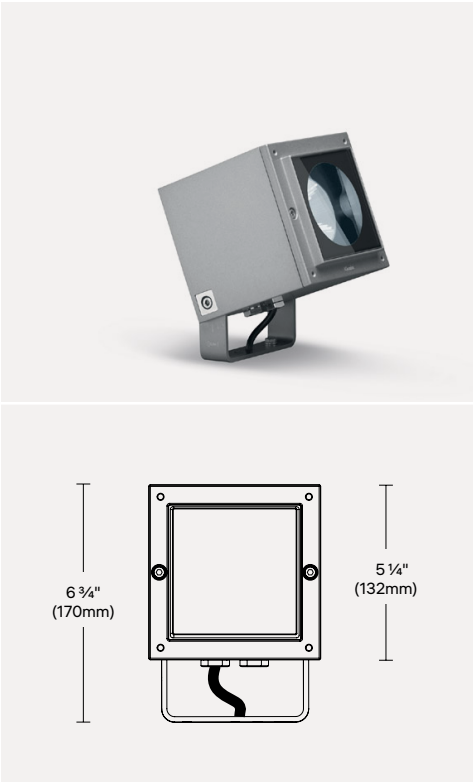


Project: \_\_\_\_\_  
Type: \_\_\_\_\_



Collection of outdoor projectors available in five sizes, ideal for urban architecture and residential environments. Featuring a compact, streamlined design to simplify installation and maintenance while ensuring minimal visual impact.

PHOTOMETRIC SUMMARY

Optic	Lumens (lm)	Efficacy (lm/W)	Max Candela (cd)
MD - 19°	1 180	84	4 550
FL - 41°	1 345	96	2 550
WF - 50°	1 345	96	1 995

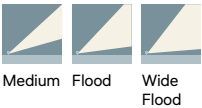
For 3000K, 80CRI. Consult [page 6](#) for full photometric data.

FINISH OPTIONS



Consult factory for custom finishes

OPTIC OPTIONS



FEATURES

- Vertical or horizontal surface mounting [page 2](#)
- 0-10V (120-277V) down to 10% Triac and ELV (120V) down to 15%
- Additional sizing available with integral driver: [3 \( 3¼"\)](#), [6 \( 6½"\)](#) & [7 \( 7¾"\)](#)
- Additional sizing available with remote driver: [2 \( 2"\)](#) & [2 with Snoot \( 2"\)](#)
- Consult factory for further customization
- Full specification available [page 4](#)



ORDERING INFO

PRODUCT CODE

EXAMPLE: IIPRO-SC-P-830-WF-UNV-01-D10

MODEL	MOUNTING	LED	OPTIC	VOLTAGE	FINISH	DIMMING
IIPRO-SC iPro 5 5 ¼" (132mm)	P Projector	<b>830</b> 3000K, 80CRI	<b>MD</b> Medium 19°	<b>UNV</b> 120-277V	<b>01</b> White	<b>D10</b> 0-10V (down to 10%)
		<b>840</b> 4000K, 80 CRI	<b>FL</b> Flood 41°		<b>02</b> Black	<b>LTE</b> Leading and trailing edge (120V only)
			<b>WF</b> Wide Flood 50°		<b>15</b> Gray	
					<b>F5</b> Rust Brown	
					<b>RAL#<sup>1</sup></b> Custom RAL	

<sup>1</sup> Additional fees may apply for custom finish. Contact factory for details.

ACCESSORIES

To be ordered separately.

CONNECTION ACCESSORY CODE

EXAMPLE: 9029-9030-KIT

CONNECTION ACCESSORIES	
More information available on <a href="#">page 2</a> .	
<b>9023-9024-KIT</b> Female and male connector for leading and trailing edge (LTE) and no dimming	<b>9029-9030-KIT</b> Female and male connector for 0-10V (D10) dimming.

OPTIC ACCESSORY CODE





EXAMPLE: IBZ49-01 + IBZ53 + IBZ51 + IBZ58(4)

OPTIC ACCESSORIES
Available optic accessories are available on <a href="#">page 3</a> .

Project: \_\_\_\_\_  
Type: \_\_\_\_\_

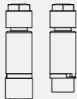

VERTICAL, GROUND & TREE INSTALLATION

To be ordered separately.  
For installation, consult instruction sheet.

FINISH				SPIKE FOR GROUND / GARDEN APPLICATIONS	
01 White	02 Black	15 Gray	F5 Rust Brown		
<b>IBZ62</b> Adjustable L-Shaped Bracket  <b>Dimensions</b> 4.52 x 4.45 x 2.40" (115 x 113 x 61mm)				<b>IB989</b> Fixed Spike  <b>Color</b> Black <b>Length</b> 14" (355mm)	<b>IBZ60</b> Orientable Spike  <b>Color</b> Black <b>Length</b> 14" (355mm)
VERTICAL INSTALLATION				TREE-MOUNTING	
					
				<b>IBZ61</b> Belt for attaching to branches  <b>Color</b> Black	

CONNECTION ACCESSORIES

To be ordered separately.

WATERPROOF IP68 FIELD CONNECTOR	
No finish option available.	
	
<b>9023-9024-KIT</b> Female and male connector for leading and trailing edge (LTE) and no dimming. (0.19"- 0.37" (5-9.5mm) cable, 3poles 16-24 AWG conductors)	<b>9029-9030-KIT</b> Female and male connector for 0-10V (D10) dimming. (0.19"- 0.37" (5-9.5mm) cable, 5poles 16-24 AWG conductors)

Project: \_\_\_\_\_  
Type: \_\_\_\_\_

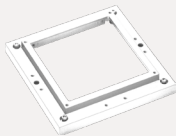
OPTICAL ACCESSORIES

To be ordered separately.

OPTICAL ACCESSORY CODE EXAMPLE: IBZ49-01 + IBZ53 + IBZ51 + IBZ58(4)

OPTICAL ACCESSORIES

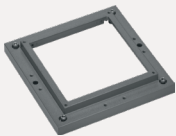
REQUIRED SUPPORT FRAME



**IBZ49-01**  
Support Frame  
**Color** White



**IBZ49-02**  
Support Frame  
**Color** Black

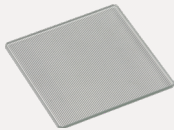


**IBZ49-15**  
Support Frame  
**Color** Gray

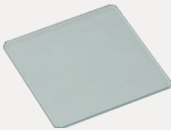


**IBZ49-F5**  
Support Frame  
**Color** Rust Brown

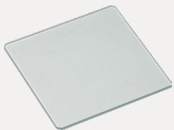
UNDER SUPPORT FRAME OPTICAL ACCESSORIES (2 MAX)



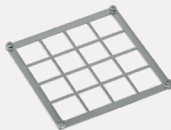
**IBZ53**  
Refractor for Elliptical Distribution



**IBZ51**  
Diffuser Glass

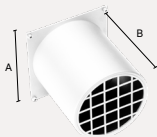


**IBZ52**  
Prismatic Diffuser Glass

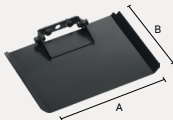


**IBZ56**  
IK09 Protective Grid  
**Color** Stainless Steel

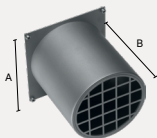
OVER SUPPORT FRAME OPTICAL ACCESSORIES (1 MAX)



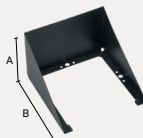
**IBZ57-01**  
Cylindrical Screen  
**Color** White / Black  
A: 4 1/8" (105mm)  
B: 4" (102mm)



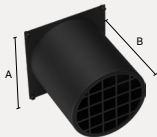
**IBZ58**  
Directional Flap  
Enter QTY (max. 4 Flaps)  
**Color** Black  
A: 3 1/4" (83mm)  
B: 4" (102mm)



**IBZ57-15**  
Cylindrical Screen  
**Color** Gray / Black  
A: 4 1/8" (105mm)  
B: 4" (102mm)



**IBZ59<sup>1</sup>**  
Visor  
**Color** Black  
A: 3" (77mm)  
B: 4" (101mm)



**IBZ57-02**  
Cylindrical Screen  
**Color** Black / Black  
A: 4 1/8" (105mm)  
B: 4" (102mm)

<sup>1</sup> The visor doesn't require the support frame.  
See instruction sheet for uses recommendation.

**IPRO 5****Projector - Integral**

Project: \_\_\_\_\_

Type: \_\_\_\_\_

**SPECIFICATIONS****LUMEN MAINTENANCE**

90% of initial lumens at 100 000 hours (L90 B10) T77°F (25°C)  
 90% of initial lumens at 100 000 hours (L90 B10) T104°F (40°C)

**MATERIAL****Optical body and frame:** Die-cast aluminum**Reflector:** Formed aluminum**Lens:** PMMA and thermoplastic.**Protective Screen:** 1/8" (4mm) tempered sodium-calcium glass.**MOUNTING**

Wall mounting system. Supplied with 3ft (1m) of power cable.

**ADJUSTMENT**

Adjustable 95°/5° from horizontal line.

**ELECTRICAL**

Integral high efficiency LED driver rated at 50 000 hours, 120-277V.

**DIMMING**

0-10V (120-277V) down to 10%.

TRIAC and ELV (120V) down to 15%.

**FINISH**

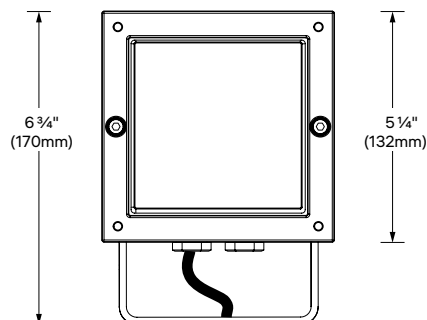
Black (RAL9005), Gray (RAL9007), Rust Brown (RAL8017), and White (RAL9016) painted with a high level of weather and UV resistance. The semi-gloss finish coating is electrostatically applied durable acrylic enamel baked at high temperatures for superior color retentive finish. We provide RAL numbers that are similar, but we cannot guarantee an exact color match. For a more accurate color and gloss match, please contact customer service for a sample chip.

**OPERATING TEMPERATURE**

-20°C to 35°C (-4°F to 95°F)

**WEIGHT**

6.2lb (2.8kg)

**DIMENSIONS**

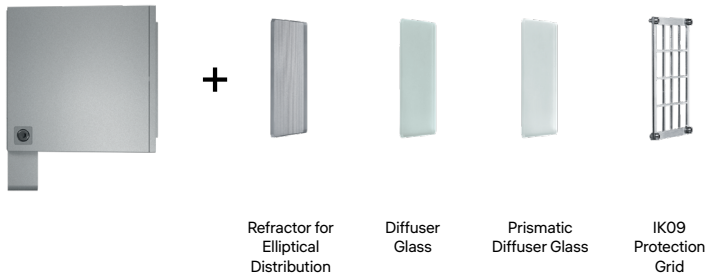
# IPRO 5

## Projector - Integral

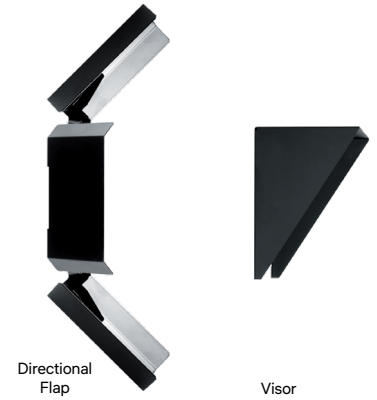
Project: \_\_\_\_\_  
Type: \_\_\_\_\_

### PROFESSIONAL ACCESSORIES

#### UNDER SUPPORT FRAME ACCESSORIES (Choose up to two)



#### OVER SUPPORT FRAME ACCESSORIES (Choose only one)



### FAMILY OVERVIEW

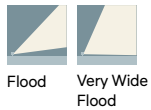
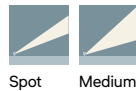
Low voltage version with remote LED driver



**CM - IPRO 2**  
2" (51mm)



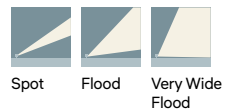
**CO - IPRO 2 + SNOOT**  
2" (51mm)



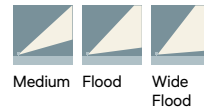
Line voltage version with integral LED driver



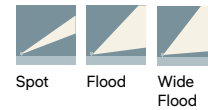
**NM - IPRO 3**  
3¼" (81mm)



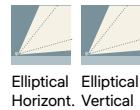
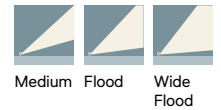
**SC - IPRO 5**  
5¼" (132mm)



**MC - IPRO 6**  
6⅛" (155mm)

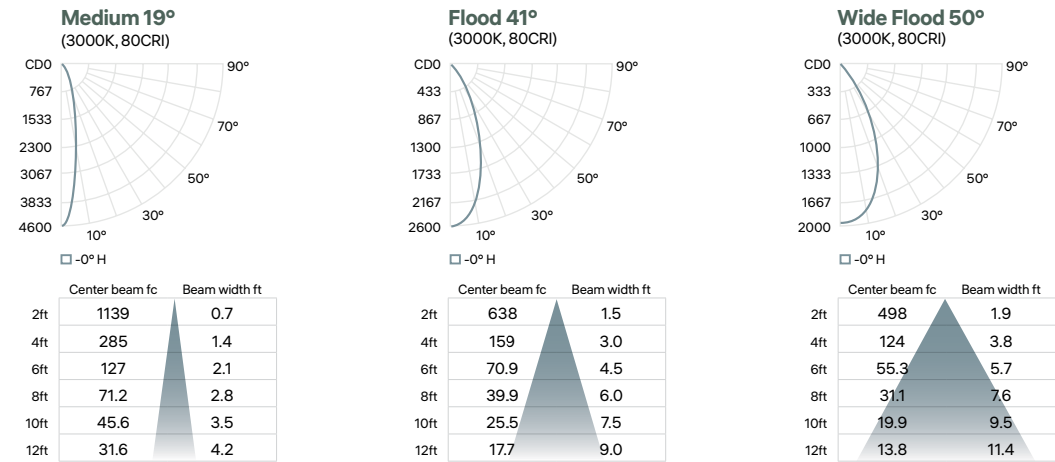


**LC - IPRO 7**  
7⅝" (192mm)



PHOTOMETRIC DATA

CCT (K)	CRI	POWER (W)	OPTIC	LUMENS (lm)	EFFICACY (lm/W)	MAX CANDELA (cd)	MODELS
3000	80	14	Medium 19°	1 180	84	4 550	IIPRO-SC-P-830-MD
			Flood 41°	1 345	96	2 550	IIPRO-SC-P-830-FL
			Wide Flood 50°	1 345	96	1 995	IIPRO-SC-P-830-WF



CCT options	3000K	4000K
CRI options	80CRI	80CRI
Multiplier	1	1.03