

TRIMLESS : LOG4/5/6 - R/S - L - NC/RF - X - XXX - XXX - 120/277 - XX - D10/LTE

IMPORTANT - READ CAREFULLY BEFORE INSTALLING FIXTURE. RETAIN THESE INSTRUCTIONS FOR FUTURE REFERENCE.

THIS PRODUCT MUST BE INSTALLED IN ACCORDANCE WITH THE NATIONAL ELECTRICAL CODE AND ALL APPLICABLE LOCAL CODES, BY A PERSON FAMILIAR WITH THE CONSTRUCTION AND OPERATION OF THE PRODUCT, AND THE HAZARDS INVOLVED. PROPER GROUNDING IS REQUIRED FOR SAFETY.

⚠ DISCONNECT THE MAIN LINE BEFORE WIRING SECONDARY CONNECTORS.

NEW CONSTRUCTION WITH PLASTER FRAME / REMODELING INSTALLATION (NC/RF) INTEGRAL DRIVER (120 / 277V) DIMMING 0-10V / TRIAC / ELV (D10 / LTE)

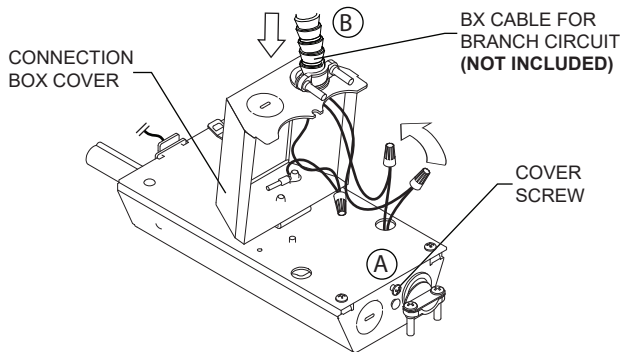
A- BRANCH CIRCUIT CONNECTIONS: LOOSEN THE COVER SCREW TO OPEN THE CONNECTION BOX COVER.

DIMMING CONNECTIONS: LOOSEN THE COVER SCREW TO OPEN THE DIMMING BOX COVER.

B- INSTALL BX CABLE (NOT INCLUDED) WITH 6" OF WIRE IN THE CONNECTION BOX AND MAKE ALL NECESSARY CONNECTIONS (SEE WIRING DIAGRAM BELOW).

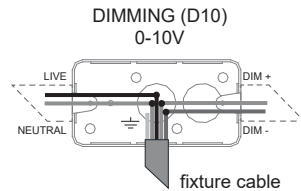
A + B

BRANCH CIRCUIT CONNECTIONS TRIAC/ELV (LTE) AND 0-10V (D10)

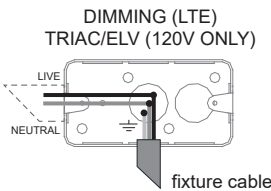
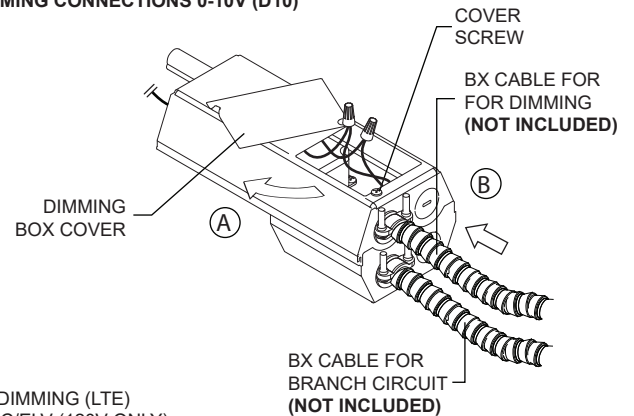


LIVE	BLACK
NEUTRAL	WHITE
⏏	GREEN
DIM +	PURPLE
DIM -	GRAY OR PINK

*junction box for reference only



DIMMING CONNECTIONS 0-10V (D10)

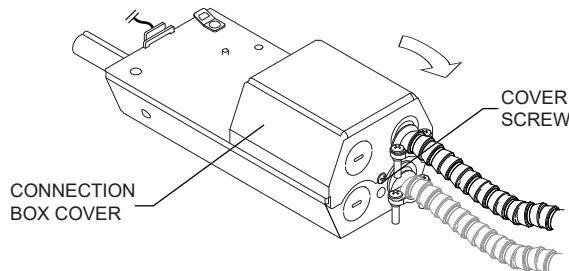


C- CLOSE THE CONNECTION BOX COVER OR DIMMING BOX COVER AND FASTEN WITH THE COVER SCREW.

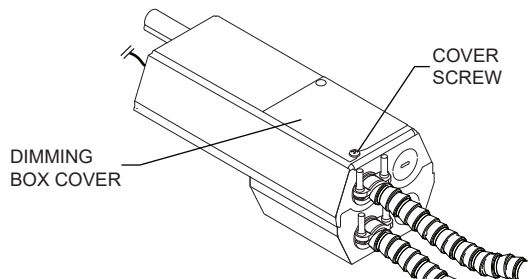
D-PASS THE CABLE LOOP THROUGH THE ATTACHEMENT CLIP OF THE CONNECTION BOX.

C

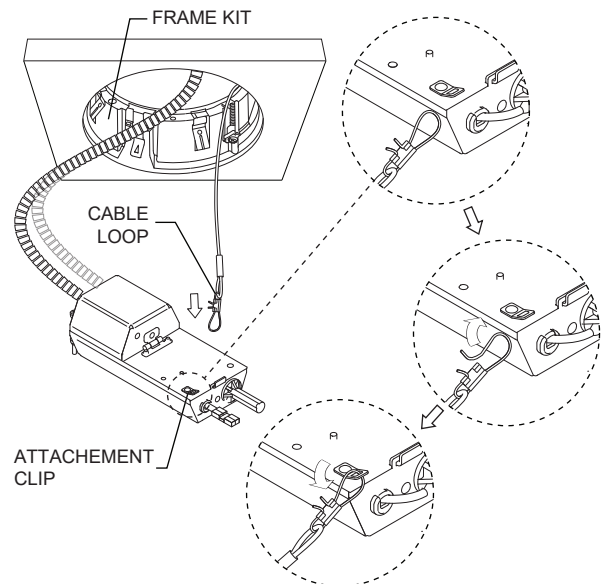
BRANCH CIRCUIT CONNECTIONS TRIAC/ELV (LTE) AND 0-10V (D10)



DIMMING CONNECTIONS 0-10V (D10)



D

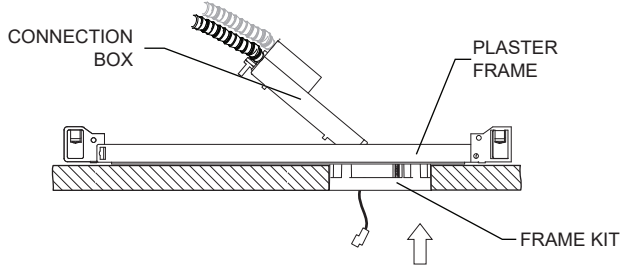


TRIMLESS : LOG4/5/6 - R/S - L - NC/RF - X - XXX - XXX - 120/277 - XX - D10/LTE

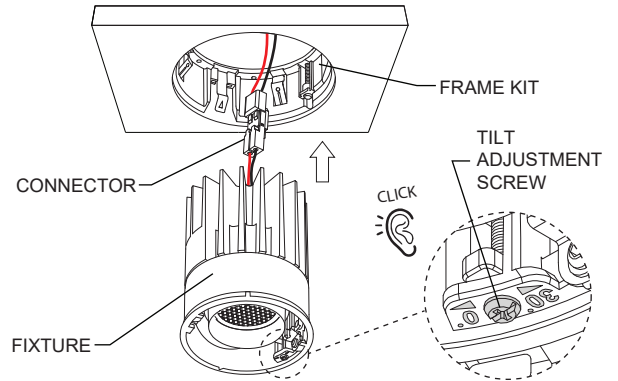
E- INSERT THE CONNECTION BOX THROUGH THE FRAME KIT. THE CONNECTION BOX MUST SETTLE ON THE PLASTER FRAME/CEILING ONCE INSTALLED.

F- CONNECT FIXTURE AND INSERT THROUGH THE FRAME KIT UNTIL IT CLICKS IN PLACE. FOR ADJUSTABLE MODELS ONLY: TO ADJUST THE TILT ANGLE, USE THE TILT ADJUSTMENT SCREW IN THE FIXTURE.

E

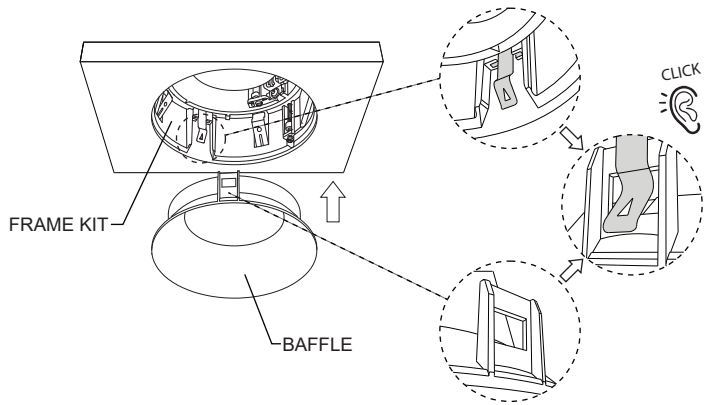


F



G- INSTALL THE BAFFLE IN THE FRAME KIT.

G



RECOMMENDED LINE DIMMERS LIST

DIMMERS LIST RECOMMANDATION	
Manufacturer	Model
LUTRON DIVA	DVSTV-WH
LUTRON POWERPAK	RMJ-ECO32-DV-B