

Surface slim floodlight projector, can be used as direct or indirect light and available with asymmetric and symmetric reflector.

Luminaire characteristics:

Power input: 20W
Lumens: 1 595lm (for 3000K)
Luminaire efficacy: Up to 79lm/W

Source: White LED (LM-80 Tested)
3000K: 90CRI
4000K: 90CRI

Lumen maintenance: 70% of initial lumens at 50 000 hours (L70) (LM79 tested)

Optics: Asymmetrical or symmetrical street optic.

Material: Body: Die-cast aluminum
Reflector: 99.98% pure anodized aluminum.
Diffuser: Toughened glass
Hardware: Stainless steel screws and silicone gaskets

Mounting: Install on a standard 4" junction box or in ground or on pole, using accessories.

Electrical: See remote LED driver options on page 3.

Finish: White or Aluminum gray painted finish follows a double powder paint in 3 step process: surface treatment containing ceramic nanoparticles (Bonderite). Epoxy primer paint. Polyester powder paint with high resistance against UV rays and harsh weather conditions.

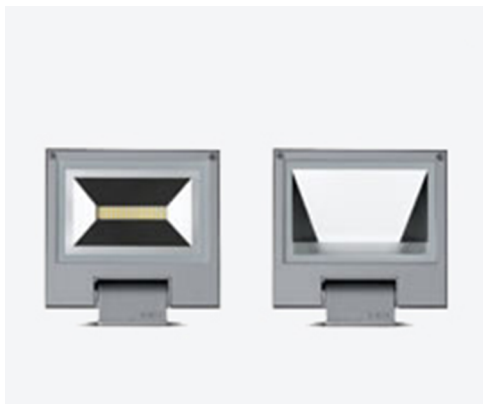
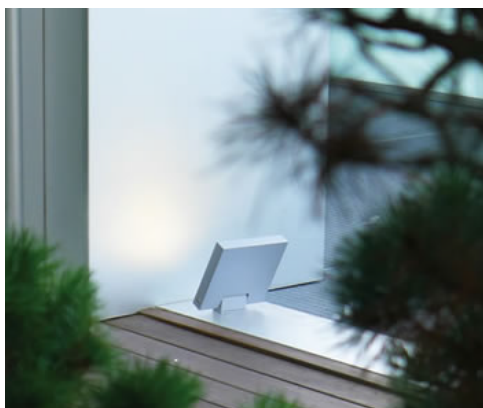
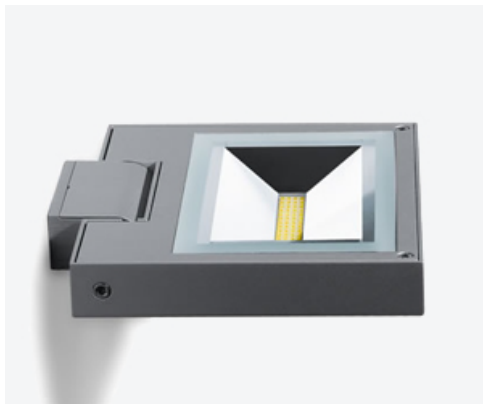
Weight: 5.73lbs (2.6kg)

EPA: 0.5ft² (0.05m²)

Warranty: 5 year limited warranty

Ratings: IP65, IK09

Certification:  cULus listed for Wet location



ORDERING INFO

- JB - REM -
 FIXTURE

MODEL

- S3050N** - 4000K, Asymmetrical
 S3050W - 3000K, Asymmetrical
 S3055N - 4000K, Symmetrical
 S3055W - 3000K, Symmetrical

MOUNTING

- JB** - Surface mounting with box

ELECTRICAL

- REM** - 24V remote power supply

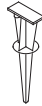
FINISH

- 01** - White
 14 - Aluminum gray

ACCESSORIES

(TO BE ORDERED SEPARATELY)

- S3049** - Stake for ground installation
 Dim: H:12" (0.26lb)
 Dim: H:310mm (0.12kg)



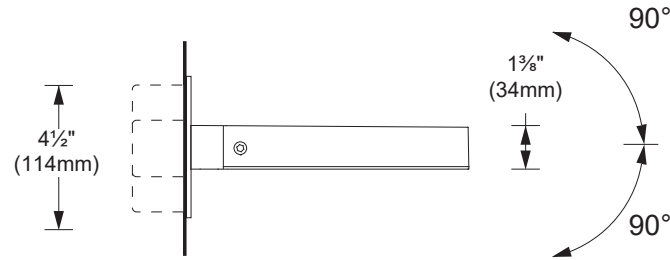
REMOTE LED DRIVER OPTION (TO BE ORDERED SEPARATELY)

Requirement for one (1) fixture: 22W, 24V DC (Remote fixture only)

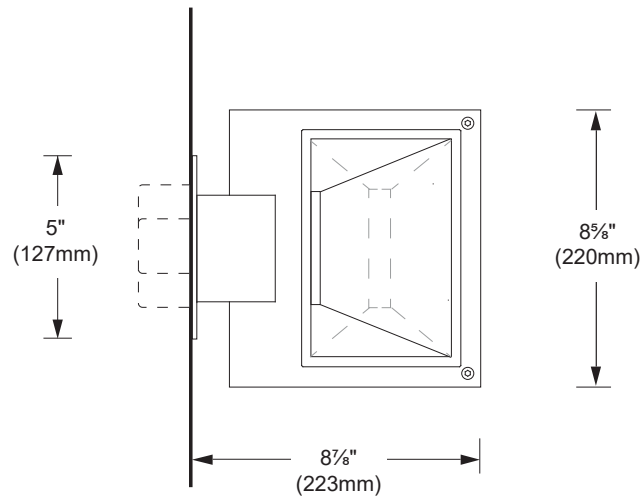
	Watts	Min-Max	Voltage	Rated	Dimming protocol	Box dimensions	Max distance 18AWG	Code
<input type="checkbox"/>	25	1	120-277V	Outdoor	None	7" X 5" X 3" (178 X 127 X 76mm)	30ft (9m)	4548-0024-025-UNV-ND
<input type="checkbox"/>	60	1-2	120-277V	Indoor	None	10" X 8" X 4" (254 X 203 X 102mm)	30ft (9m)	4448-0024-060-UNV-ND
<input type="checkbox"/>	75	1-3	120-277V	Outdoor	None	11" X 3" X 2" (279 X 75 X 51mm)	30ft (9m)	4545-0024-075-UNV-ND
<input type="checkbox"/>	80	1-3	120V	Outdoor	Leading and trailing edge (ELV and TRIAC)	14" X 5" X 2" (356 X 127 X 51mm)	30ft (9m)	4551-0024-080-120-LTE
<input type="checkbox"/>	150	1-6	120-277V	Indoor	0-10V	10" X 8" X 4" (254 X 203 X 102mm)	27ft (8.2m)	4448-0024-150-UNV-D10
<input type="checkbox"/>	200	1-4 Per channel (Max 8)	120-277V	Outdoor	None	12" X 5" X 2" (305 X 127 X 51mm)	30ft (9m) Per channel	4546-0024-200-2C-UNV-ND

*The total power of all connected luminaires may not be higher than the power of the driver.

DIMENSIONS



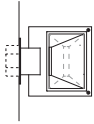
SIDE VIEW



BOTTOM VIEW

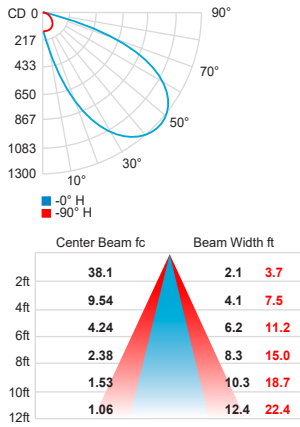
TECHNICAL DATA

Visit sistemalux.com for complete photometric data.



CCT (K)	CRI	LOAD (W)	OPTIC	LUMENS (lm)	EFFICACY (lm / w)	MAX CANDELA (cd)	MODELS
3000K	90	20W	Asymmetrical	1 595	79	1 280	S3050W
				1 545	77	1 250	S3050N
4000K	90	20W	Symmetrical	1 505	75	710	S3055W
				1 560	78	675	S3055N

Asymmetrical (3000K, 90 CRI)



Symmetrical (3000K, 90 CRI)

