

TRIMLESS : LOG5/6 - R/S - L - NC/RF - X - XXX - XXX - 120/277 - XX - D01/D2B/D3

IMPORTANT - READ CAREFULLY BEFORE INSTALLING FIXTURE. RETAIN THESE INSTRUCTIONS FOR FUTURE REFERENCE.

THIS PRODUCT MUST BE INSTALLED IN ACCORDANCE WITH THE NATIONAL ELECTRICAL CODE AND ALL APPLICABLE LOCAL CODES, BY A PERSON FAMILIAR WITH THE CONSTRUCTION AND OPERATION OF THE PRODUCT, AND THE HAZARDS INVOLVED. PROPER GROUNDING IS REQUIRED FOR SAFETY.

⚠ DISCONNECT THE MAIN LINE BEFORE WIRING SECONDARY CONNECTORS.

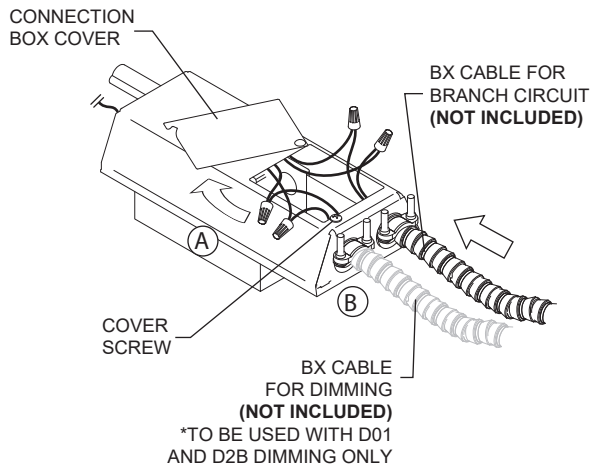
NEW CONSTRUCTION WITH PLASTER FRAME / REMODELING INSTALLATION (NC/RF) INTEGRAL DRIVER (120 / 277V) LUTRON BUS SUPPLY (D2B) - LUTRON TRIAC (120V)(D3) - 0-10V (D01)

- A- LOOSEN THE COVER SCREW TO OPEN THE CONNECTION BOX COVER.
- B- INSTALL BX CABLE (NOT INCLUDED) WITH 6" OF WIRE IN THE CONNECTION BOX AND MAKE ALL NECESSARY CONNECTIONS (SEE WIRING DIAGRAM BELOW).
- C- CLOSE THE CONNECTION BOX COVER AND FASTEN WITH THE COVER SCREW.
- D- PASS THE CABLE LOOP THROUGH THE ATTACHEMENT CLIP OF THE CONNECTION BOX.

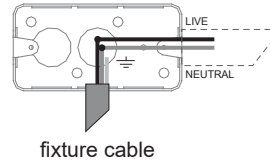
A + B

LUTRON BUS SUPPLY (D2B), 0-10V (D01)
AND LUTRON TRIAC (D3) OPTIONS

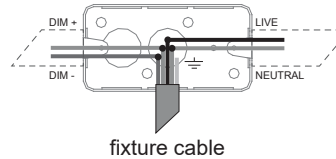
LIVE	BLACK
NEUTRAL	WHITE
≡	GREEN
DIM +	PURPLE
DIM -	GRAY OR PINK



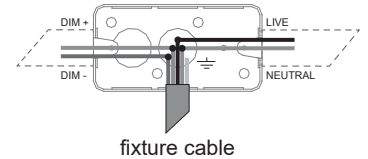
DIMMING (D3)
LUTRON TRIAC
(120V ONLY)



DIMMING (D2B)
LUTRON BUS SUPPLY

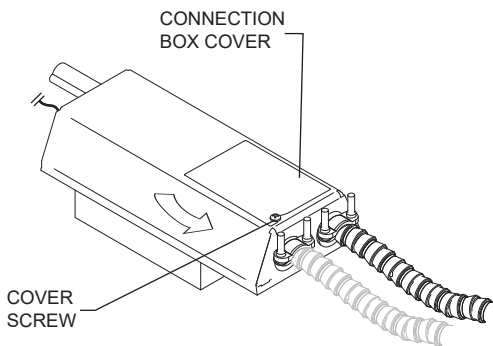


DIMMING (D01)
0-10V

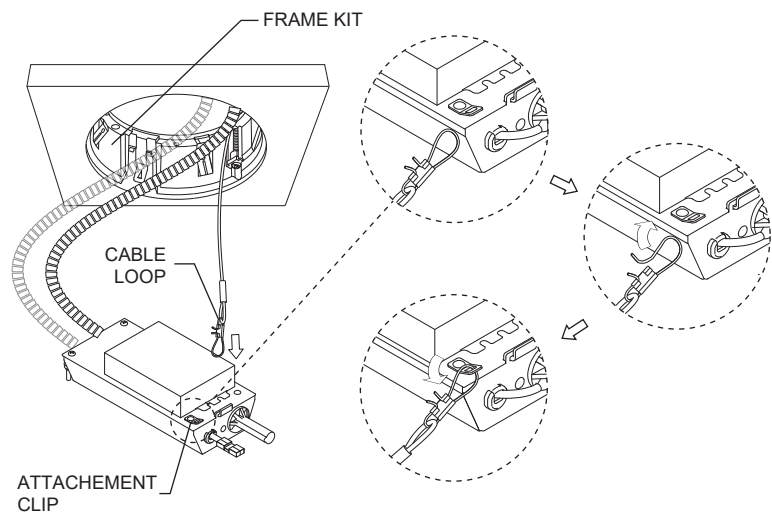


*junction box for reference only

C

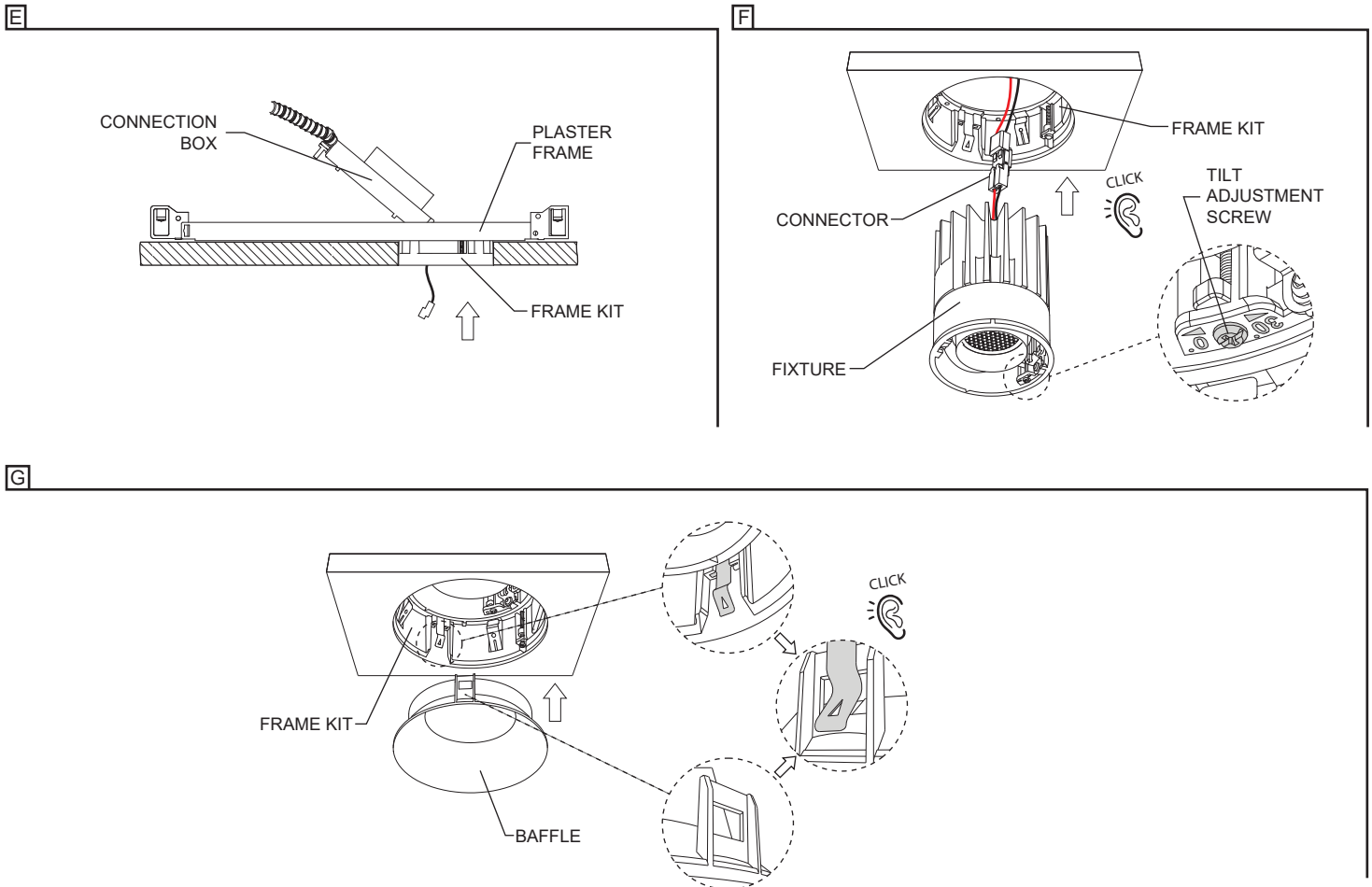


D



TRIMLESS : LOG5/6 - R/S - L - NC/RF - X - XXX - XXX - 120/277 - XX - D01/D2B/D3

- E- INSERT THE CONNECTION BOX THROUGH THE FRAME KIT. THE CONNECTION BOX MUST SETTLE ON THE PLASTER FRAME/CEILING ONCE INSTALLED.
- F- CONNECT FIXTURE AND INSERT THROUGH THE FRAME KIT UNTIL IT CLICKS IN PLACE. FOR ADJUSTABLE MODELS ONLY: TO ADJUST THE TILT ANGLE, USE THE TILT ADJUSTMENT SCREW IN THE FIXTURE.
- G- INSTALL THE BAFFLE IN THE FRAME KIT.



RECOMMENDED LINE DIMMERS LIST

DIMMERS LIST RECOMMANDATION	
Manufacturer	Model
LUTRON DIVA	DVSTV-WH
LUTRON POWERPAK	RMJ-ECO32-DV-B