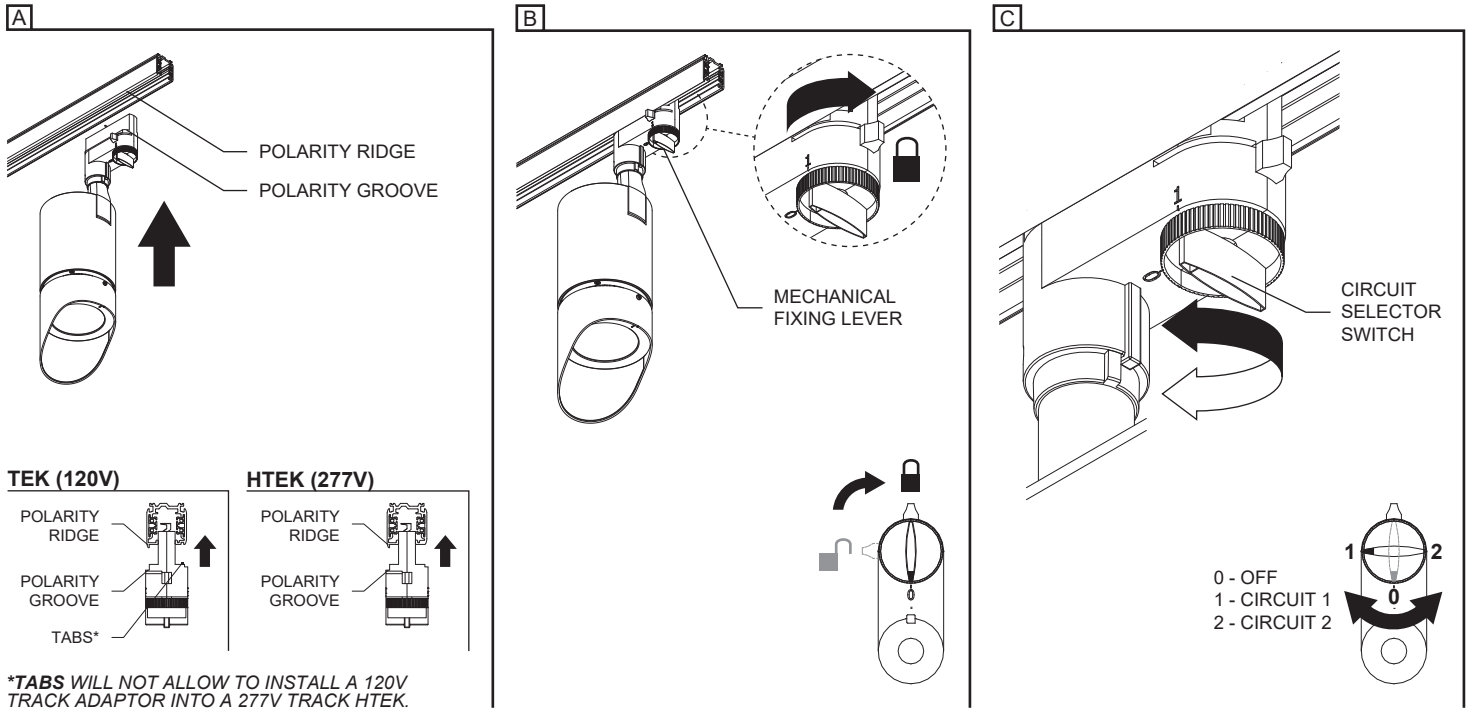


IMPORTANT - READ CAREFULLY BEFORE INSTALLING FIXTURE. RETAIN THESE INSTRUCTIONS FOR FUTURE REFERENCE.
THIS PRODUCT MUST BE INSTALLED IN ACCORDANCE WITH THE NATIONAL ELECTRICAL CODE AND ALL APPLICABLE LOCAL CODES, BY A PERSON FAMILIAR WITH THE CONSTRUCTION AND OPERATION OF THE PRODUCT, AND THE HAZARDS INVOLVED. PROPER GROUNDING IS REQUIRED FOR SAFETY.

INSTALLING PROJECTOR ON TWO CIRCUIT TRACK (120V OR 277V)

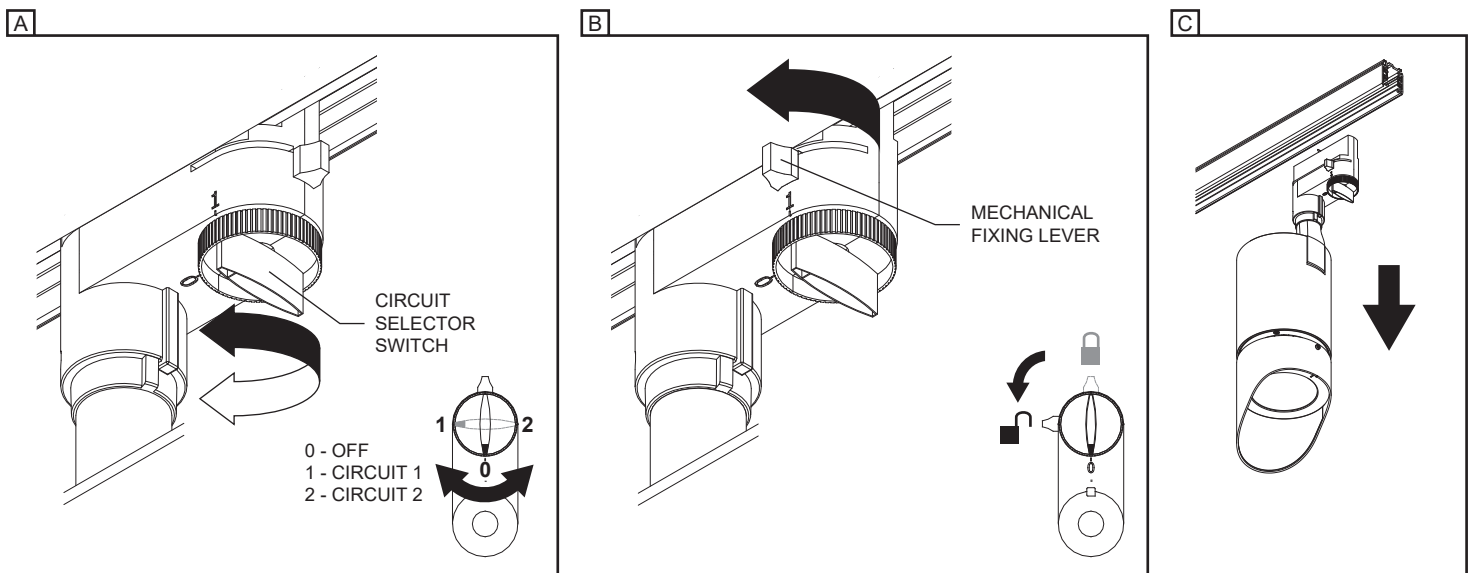
FOR USE WITH **TEK SERIES** (120V) TRACK SYSTEM - OR **HTEK SERIES** (277V) TRACK SYSTEM ONLY.

- A- INSERT THE PROJECTOR TRACK ADAPTOR WITH THE POLARITY GROOVE TOWARDS THE POLARITY RIDGE ON THE TRACK AND PUSH INTO THE TRACK UNTIL IT SNAPS INTO PLACE.
- B- TURN THE MECHANICAL FIXING LEVER TO LOCK THE PROJECTOR INTO THE TRACK.
- C- SELECT THE DESIRED CIRCUIT WITH THE CIRCUIT SELECTOR SWITCH.



REMOVING PROJECTOR FROM TRACK TEK / HTEK (1780)

- A- TO REMOVE THE PROJECTOR FROM TRACK, SELECT 0-POSITION (**OFF**) ON THE CIRCUIT SELECTOR SWITCH.
- B- TURN THE MECHANICAL FIXING LEVER AS SHOWN TO **UNLOCK** THE PROJECTOR FROM THE TRACK.
- C- PULL FIRST FROM THE FIXING LEVER END TO REMOVE THE PROJECTOR FROM THE TRACK.

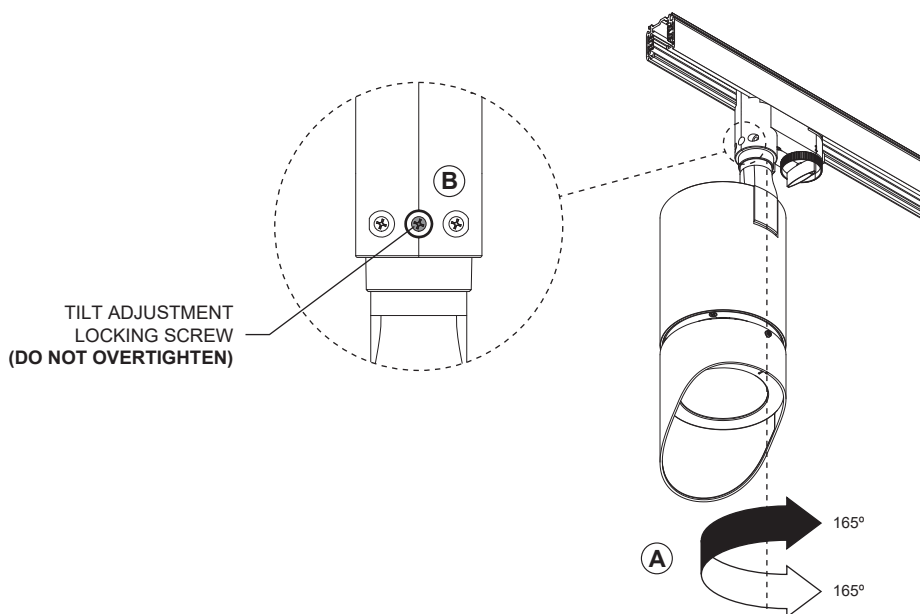


PAN ANGLE POSITION (1780)

A- LOOSEN THE PAN ADJUSTMENT LOCKING SCREW USING A PHILLIPS SCREWDRIVER.

B- SET TO THE DESIRED PAN POSITION (**MAXIMUM OF 330° AXIAL ROTATION**) AND FASTEN THE SCREW (**DO NOT OVERTIGHTEN**).

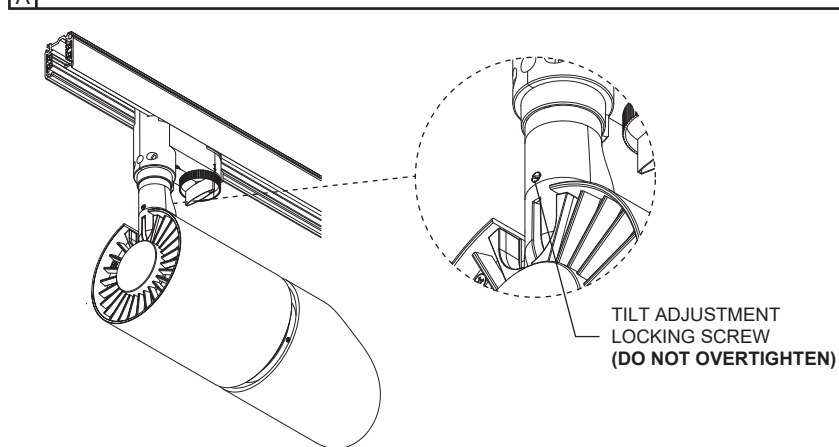
A + B

**TILT ANGLE POSITION (1780)**

A- LOOSEN THE TILT ADJUSTMENT LOCKING SCREW USING A SLOTTED SCREWDRIVER.

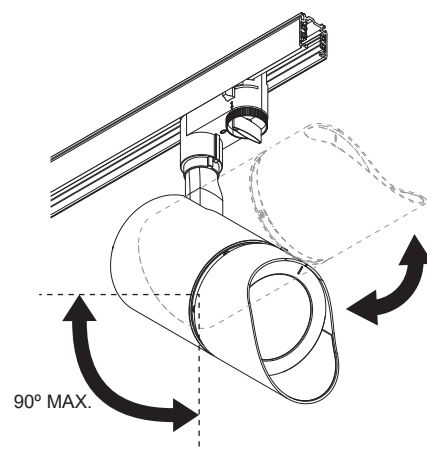
B- SET TO THE DESIRED TILT POSITION (**MAXIMUM OF 90° AXIAL ROTATION**) AND FASTEN THE SCREW (**DO NOT OVERTIGHTEN**).

A



⚠ NOT UNLOCKING THE LOCKING SET SCREW TO CHANGE THE TILT ANGLE WILL CAUSE INTERNAL DAMAGE TO THE PROJECTOR.

B



REPLACING OPTIC

A- UNFASTEN THE VISOR SET SCREW USING AN ALLEN KEY (**INCLUDED**) AND REMOVE THE VISOR. **DO NOT REMOVE THE SET SCREW.**

B- UNSCREW THE OPTIC HOLDER FROM THE FIXTURE.

C- REPLACE THE LENS AND SET THE LENS INTO THE OPTIC HOLDER PINS. ***THE LENS GLOSSY SIDE MUST BE FACING OUTWARD.**

D- SCREW THE OPTIC HOLDER BACK ON THE FIXTURE.

E- UNFASTEN THE OPTIC HOLDER (2) SET SCREWS. **DO NOT COMPLETELY REMOVE THE SET SCREW.**

F- ROTATE THE OPTIC HOLDER'S FRONT RING UNTIL THE NOTCH IS ALIGNED AND CENTERED WITH THE FIXTURE ARM.

DO NOT ROTATE THE OPTIC HOLDER.

G- FASTEN THE OPTIC HOLDER (2) SET SCREWS.

H- SLIDE THE VISOR BACK ON THE FIXTURE HOLDER AND FASTEN THE SET SCREW.

***MAKE SURE THE VISOR ALIGNMENT DETAIL IS ALIGNED WITH THE OPTIC HOLDER NOTCH BEFORE TIGHTENING.**

