

IMPORTANT - READ CAREFULLY BEFORE INSTALLING FIXTURE. RETAIN THESE INSTRUCTIONS FOR FUTURE REFERENCE. THIS PRODUCT MUST BE INSTALLED IN ACCORDANCE WITH THE NATIONAL ELECTRICAL CODE AND ALL APPLICABLE LOCAL CODES, BY A PERSON FAMILIAR WITH THE CONSTRUCTION AND OPERATION OF THE PRODUCT, AND THE HAZARDS INVOLVED. PROPER GROUNDING IS REQUIRED FOR SAFETY.

REMODEL INSTALLATION (RF)

- A- MAKE THE CUT-OUT OPENING (SEE DIMENSIONS BELOW).
- B- REMOVE BAFFLE FROM THE LIGHTING FIXTURE.
- C- MAKE ALL NECESSARY CONNECTIONS USING THE QUICK CONNECTORS (**INCLUDED**). USE ONLY WITH **CLASS 2** POWER SUPPLY.
- D- **ROUND MODEL**: BEND AND HOLD SPRINGS AGAINST FIXTURE BODY AND ROTATE IN SPECIFIED DIRECTION (SEE BELOW) WHILE PUSHING UPWARD TO INSERT THE FIXTURE INTO THE CUT-OUT OF CEILING.
- SQUARE MODEL**: ADJUST THE CLIP GAP DEPENDING ON THE CEILING THICKNESS. INSERT FIXTURE INTO THE CUT-OUT OF CEILING UNTIL IT CLICKS IN PLACE TO BE SECURED.
- E- (*Optional*) INSERT HONEYCOMB ACCESSORY IF APPLICABLE.

A

Model	Shape	Mounting	Cut-out dimensions (A)	Clearance
LOGP2R	Round (R)	Trim (T)	Ø 1 7/8" (Ø 47mm)	4 3/4" (120mm)
LOGP2S	Square (S)		1 13/16" x 1 13/16" (46 x 46mm)	

Ceiling Thickness
1/8" - 13/16" (3 - 20mm)

B

ROUND MODEL

SQUARE MODEL

C

FEED BY CLASS 2 POWER SUPPLY

ROUND MODEL

SQUARE MODEL

FEEDER CABLE
min. 6 inch (152mm)

WIRING DIAGRAM

— RED (+) Vdc

— BLACK (-)

D

ROUND MODEL

SQUARE MODEL

E

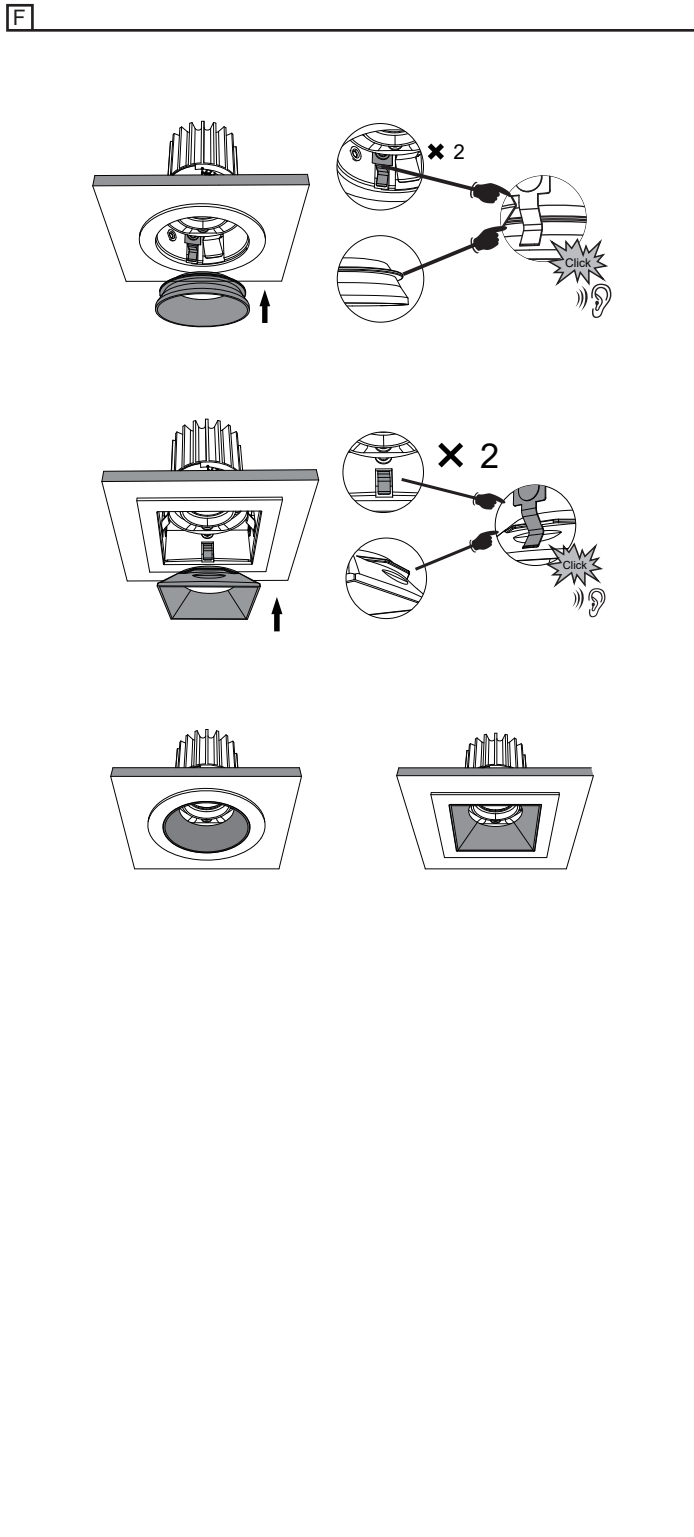
ROUND MODEL

SQUARE MODEL

(Optional honeycomb accessory Please order separately)

FOR FIXED ORIENTATION

F- ALIGN THE BAFFLE AND PUSH IT INTO THE TRIM UNTIL IT CLICKS IN PLACE.



FOR ADJUSTABLE ORIENTATION

F- THE OPTICAL ORIENTATION CAN CHANGE FOR 30° TILT AND 355° PAN WITH MANUAL ADJUSTEMENT.
G- ALIGN THE BAFFLE AND PUSH IT INTO THE TRIM UNTIL IT CLICKS IN PLACE.

