

IMPORTANT - READ CAREFULLY BEFORE INSTALLING FIXTURE. RETAIN THESE INSTRUCTIONS FOR FUTURE REFERENCE.

THIS PRODUCT MUST BE INSTALLED IN ACCORDANCE WITH THE NATIONAL ELECTRICAL CODE AND ALL APPLICABLE LOCAL CODES, BY A PERSON FAMILIAR WITH THE CONSTRUCTION AND OPERATION OF THE PRODUCT, AND THE HAZARDS INVOLVED. PROPER GROUNDING IS REQUIRED FOR SAFETY.

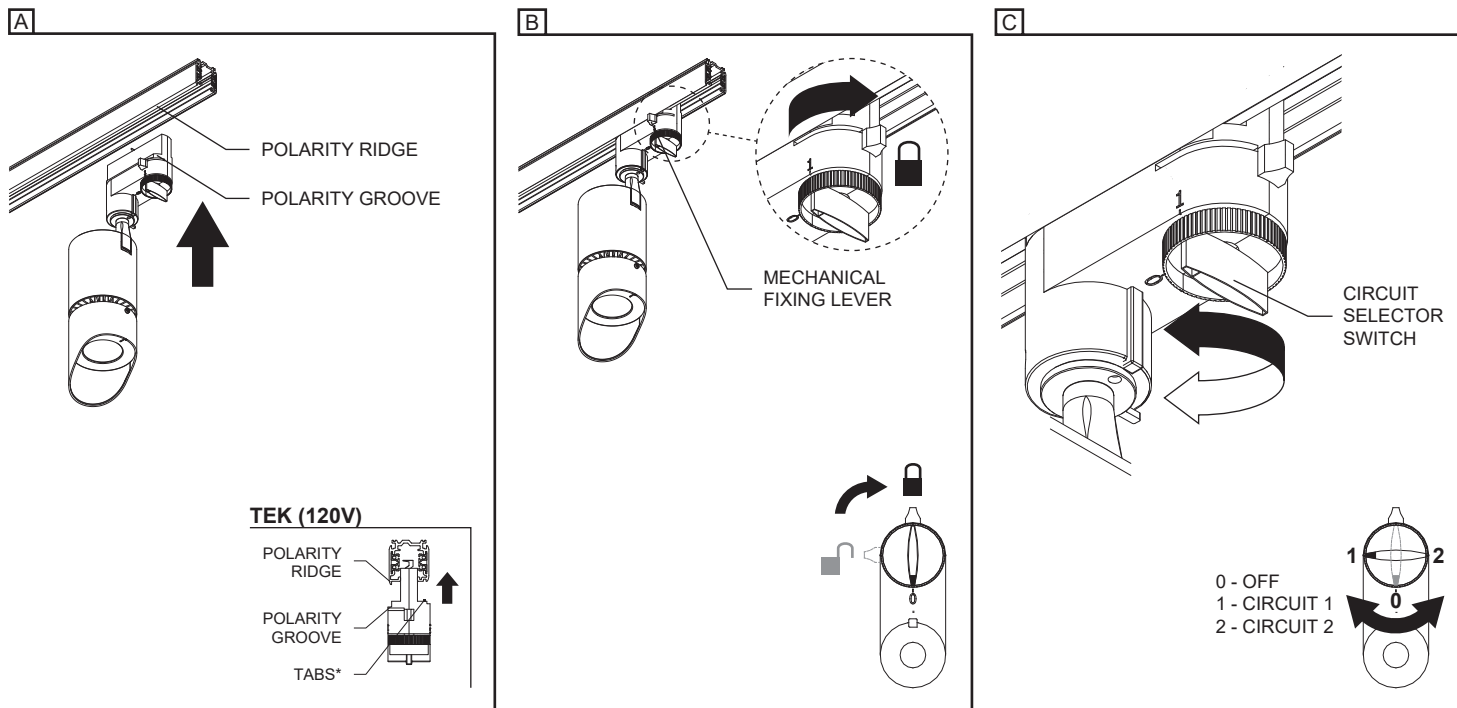
INSTALLING PROJECTOR ON TWO CIRCUIT TRACK (120V)

FOR USE WITH **TEK SERIES (120V)** TRACK SYSTEM ONLY.

A- INSERT THE PROJECTOR TRACK ADAPTOR WITH THE POLARITY GROOVE TOWARDS THE POLARITY RIDGE ON THE TRACK AND PUSH INTO THE TRACK UNTIL IT SNAPS INTO PLACE.

B- TURN THE MECHANICAL FIXING LEVER TO LOCK THE PROJECTOR INTO THE TRACK.

C- SELECT THE DESIRED CIRCUIT WITH THE CIRCUIT SELECTOR SWITCH.

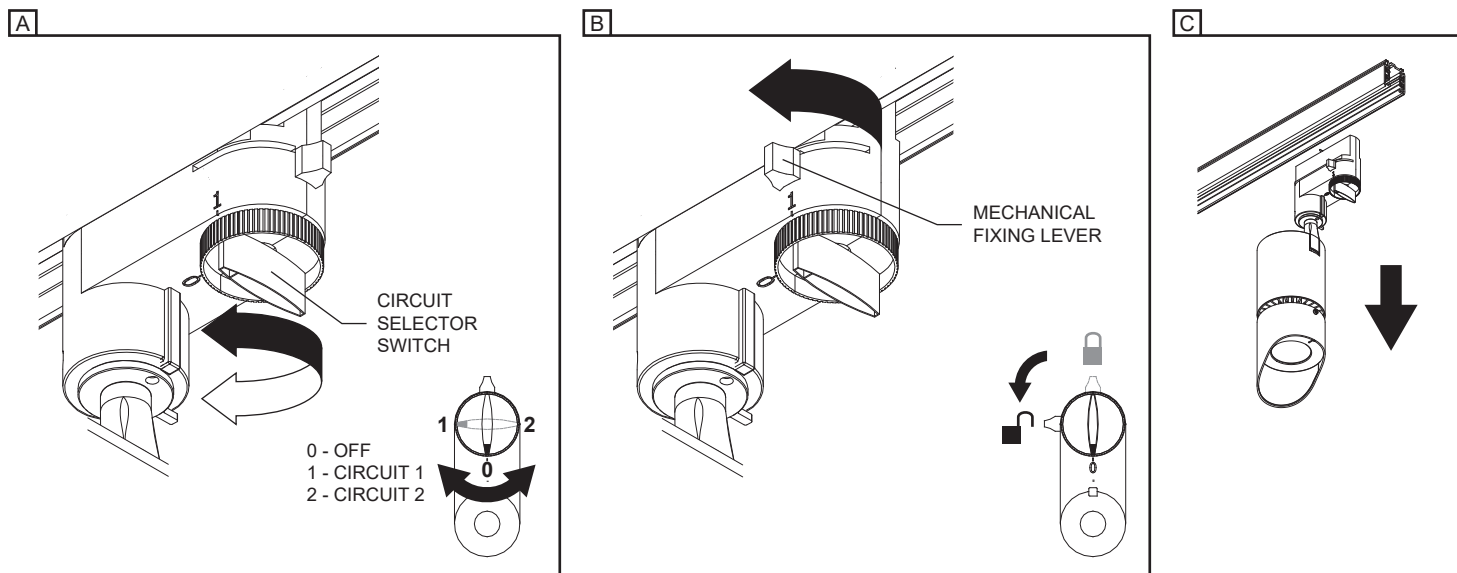


REMOVING PROJECTOR FROM TRACK TEK (1770)

A- TO REMOVE THE PROJECTOR FROM TRACK, SELECT **0-POSITION (OFF)** ON THE CIRCUIT SELECTOR SWITCH.

B- TURN THE MECHANICAL FIXING LEVER AS SHOWN TO **UNLOCK** THE PROJECTOR FROM THE TRACK.

C- PULL FIRST FROM THE FIXING LEVER END TO REMOVE THE PROJECTOR FROM THE TRACK.

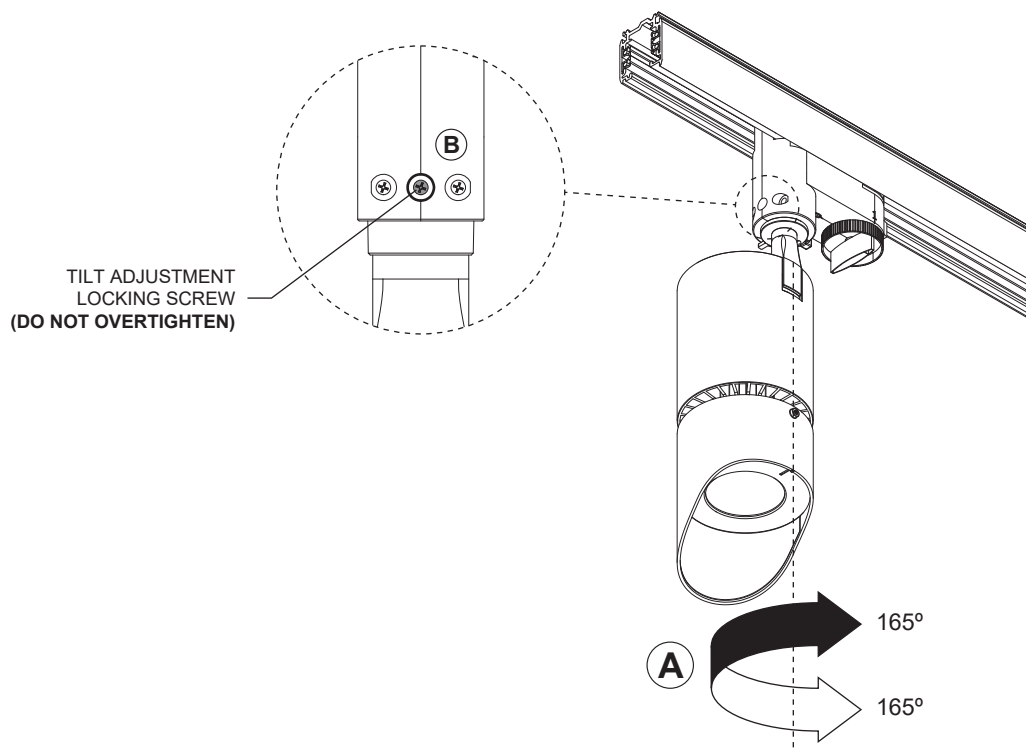


PAN ANGLE POSITION (1770)

A- LOOSEN THE PAN ADJUSTMENT LOCKING SCREW USING A PHILLIPS SCREWDRIVER.

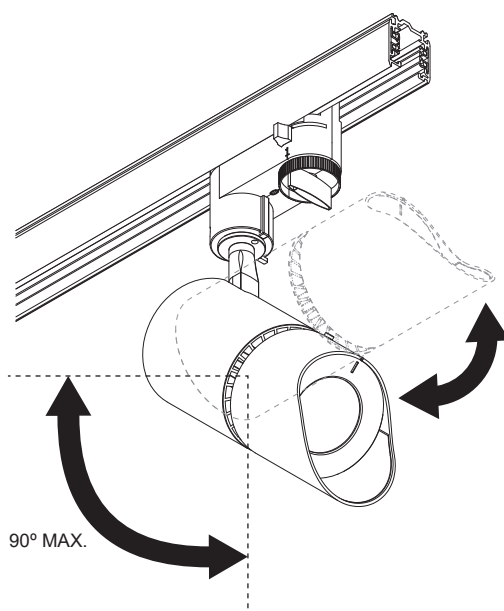
B- SET TO THE DESIRED PAN POSITION (**MAXIMUM OF 330° AXIAL ROTATION**) AND FASTEN THE SCREW (**DO NOT OVERTIGHTEN**).

A + B

**TILT ANGLE POSITION (1770)**

A- ROTATE THE FIXTURE TO DESIRED TILT POSITION (**MAXIMUM OF 90° AXIAL ROTATION**).

A



REPLACING OPTIC

A- UNFASTEN THE VISOR SET SCREW USING AN ALLEN KEY (**INCLUDED**) AND REMOVE THE VISOR. **DO NOT COMPLETELY REMOVE THE SET SCREW.**

B- UNSCREW THE OPTIC HOLDER FROM THE FIXTURE.

C- REPLACE THE LENS AND SET THE LENS INTO THE OPTIC HOLDER PINS. ***THE LENS GLOSSY SIDE MUST BE FACING OUTWARD.**

D- SCREW THE OPTIC HOLDER BACK ON THE FIXTURE.

E- UNFASTEN THE OPTIC HOLDER (2) SET SCREWS. **DO NOT COMPLETELY REMOVE THE SET SCREW.**

F- ROTATE THE OPTIC HOLDER'S FRONT RING UNTIL THE NOTCH IS ALIGNED AND CENTERED WITH THE FIXTURE ARM.

DO NOT ROTATE THE OPTIC HOLDER.

G- FASTEN THE OPTIC HOLDER (2) SET SCREWS.

H- SLIDE THE VISOR BACK ON THE FIXTURE HOLDER AND FASTEN THE SET SCREW.

***MAKE SURE THE VISOR ALIGNMENT DETAIL IS ALIGNED WITH THE OPTIC HOLDER NOTCH BEFORE TIGHTENING.**

