

Collection of specification grade downlights for architectural applications. Excellent build quality with features for the most demanding professional applications. Title 24 - JA8 versions available in two sizes 3", 4" aperture with generous light outputs and excellent chromatic performance. Professional optics available with general downlight or directional distribution.

**Luminaire characteristic:**

**Power input:** 9.5W or 13W  
**Lumens:** 470lm to 705lm (for 3000K, 90CRI)  
**Luminaire efficacy:** Up to 54lm/W

**Source:**

COB LED module (LM-80)  
2700K: 90CRI,  
3000K: 90CRI,  
3500K: 90CRI.

**Lumen maintenance:**

LM79,  
90% of initial lumens at 50 000 hours (L90)(LM-79),  
80% of initial lumens at 100 000 hours (L80)(LM-79).

**Optic:**

Adjustable deep recessed reflector available with narrow flood or flood optic. Optical assembly hot aiming adjustment: 30° tilt and 359°pan.

**Material:**

Body: Die-cast aluminum optical assembly  
Reflector: Metalized polycarbonate  
Baffle: Painted polycarbonate

**Mounting:**

New construction with housing for insulated ceiling, chicago plenum and airtight applications.

**Electrical:**

Integral high efficiency power supply rated at 50 000 hours, 120V or 277V.

**Dimming:**

Compatible with 0-10V or leading and trailing edge dimming, down to 5%.

**Finish:**

Powder coated body and baffle. (page 2)

**Weight:**

2.15lbs (0.98kg).

**Warranty:**

5 year limited warranty.

**Rating:**

IP54

**Certification:**



cULus listed for damp location. Interior use only.



Title 24-JA8-2019 high efficiency luminaire. Airtight luminaire less than 2 cfm leakage @1.57PSI per ASTM E283.

To confirm which versions are certified, please consult the "Appliance Advanced Search" option at the following address :  
<https://cacertappliances.energy.ca.gov>

**ORDERING INFO**

**LOG3 AT - -**  
FIXTURE

**BI - LOG3 - AT -**  
HOUSING



**MODEL**

- R** - Round       **S** - Square

**MOUNTING**

- T** - Trim       **L** - Trimless

**INSTALLATION**

- AT** - Airtight housing<sup>(1)</sup>

**OUTPUT**

- B** - Base output (9.5W)       **H** - High output (13W)

**LED**

- 927** - 2700K, 90CRI       **930** - 3000K, 90CRI       **935** - 3500K, 90CRI

**OPTIC**

- ANF** - Adjustable, narrow flood (25°)       **AFL** - Adjustable, flood (42°)

**VOLTAGE**

- 120** - 120V       **277** - 277V

**FINISH** (trim finish / baffle finish)

- |  |   |  |  |
|--|---|--|--|
| <b>White trim</b>  | <b>Gray trim</b>  | <b>Black trim</b>  | <b>Trimless</b>  |
| <input type="checkbox"/> <b>01</b> - White / white                         | <input type="checkbox"/> <b>20</b> - Gray / white                         | <input type="checkbox"/> <b>23</b> - Black / white                         | <input type="checkbox"/> <b>01</b> - White                         |
| <input type="checkbox"/> <b>21</b> - White / black                         | <input type="checkbox"/> <b>22</b> - Gray / black                         | <input type="checkbox"/> <b>02</b> - Black / black                         | <input type="checkbox"/> <b>02</b> - Black                         |
| <input type="checkbox"/> <b>13</b> - White / matte anodized <sup>(2)</sup> | <input type="checkbox"/> <b>03</b> - Gray / matte anodized <sup>(2)</sup> | <input type="checkbox"/> <b>33</b> - Black / matte anodized <sup>(2)</sup> | <input type="checkbox"/> <b>51</b> - Matte anodized <sup>(2)</sup> |



**DIMMING**

- D10** - 0-10V (down to 5%)<sup>(3)(4)</sup>       **LTE** - Leading and trailing edge dimming (down to 5%)(120V only)<sup>(3)(4)</sup>

<sup>(1)</sup> Airtight luminaire less than 2 cfm leakage @1.57PSI per ASTM E283.  
<sup>(2)</sup> May require a longer lead time than standard. Please contact customer service for details.  
<sup>(3)</sup> Dimming levels will vary depending on the dimmer used and the number of luminaires on the line.  
<sup>(4)</sup> Daisy chain connection ready.

**ACCESSORY**

(TO BE ORDERED SEPARATELY)

- 9000-02** - Black hex cell louver



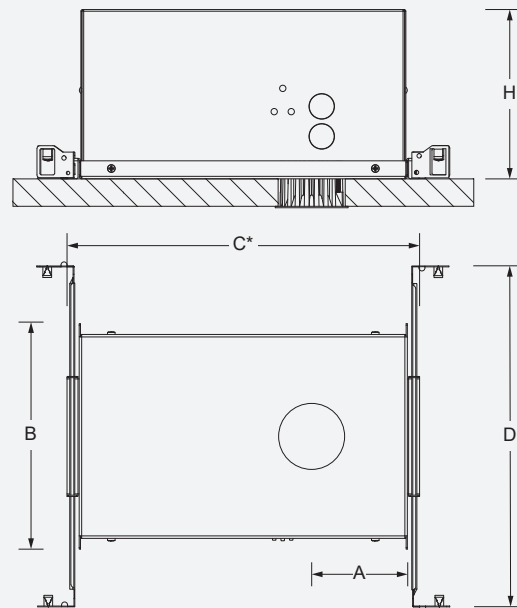
**INSTALLATION OPTIONS**

**New construction with airtight (AT) housing.**

Housing with hanger bars system for new construction installations.  
Suitable for insulated ceiling ,chicago plenum and airtight applications.  
Housing can be shipped separately.

**Ceiling thickness:** 1/8" - 1" (3 - 27mm)

**Total weight:** 10.25lb (4.65kg)



\*Provide a minimum of 1/8" (46mm) on each side for the hanger bar fixations

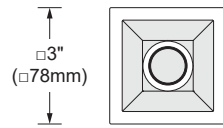
Model	Housing	Cut-out dimensions	Cut-out position (A)	Overall dimensions (BxC)	Hanger bars (D)	Clearance (H)
LOG3R	BI-LOG3RT-AT-XXX	Ø2 3/4" (Ø 71mm)	4" (101mm)	10 7/16" x 14 13/16" (239 x 373mm)	15" to 26" (381 to 660mm)	7 1/4" (183mm)
	BI-LOG3RL-AT-XXX	Ø2 7/8" (Ø 73mm)				
LOG3S	BI-LOG3ST-AT-XXX	2 5/8" x 2 5/8" (69 x 69mm)				
	BI-LOG3SL-AT-XXX	2 3/4" x 2 3/4" (71 x 71mm)				

**DIMENSIONS**

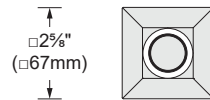
**SQUARE TRIM MODEL**



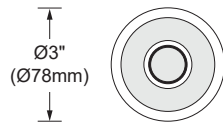
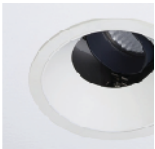
**ADJUSTABLE**



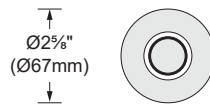
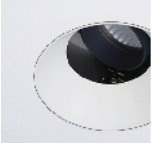
**SQUARE TRIMLESS MODEL**



**ROUND TRIM MODEL**

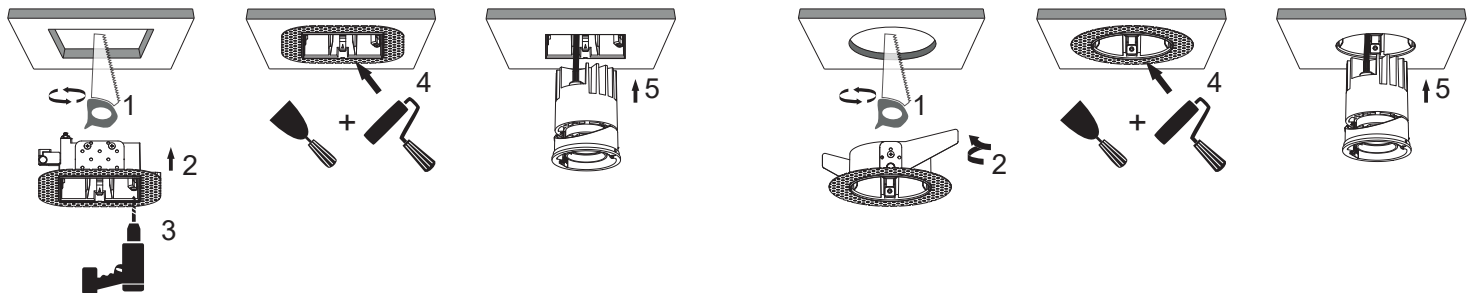


**ROUND TRIMLESS MODEL**



**TRIMLESS FRAME KIT**

**Trimless frame kit** to be fastened to the gypsum board. The assembly is then finished by plastering, sanding and painting. Install the luminaire inside the opening once painting is completed. The kit is sold separately for retrofit installation or supplied with the plaster frame or the housing for new construction installations.



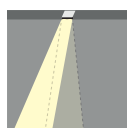
**LED COLOR FIDELITY DATA**

CRI	CCT	R1	R2	R3	R4	R5	R6	R7	R8	R9	R10	R11	R12	R13	R14	R15	Rf	Rg	Melanopic ratio
90	2700K	94	98	99	94	95	98	91	82	61	95	96	88	96	99	-	93	99	0.497
	3000K	94	97	99	94	94	96	93	83	62	92	95	84	95	99	-	93	99	0.563
	3500K	93	96	98	93	93	95	93	84	62	90	94	78	94	98	-	92	98	0.642

**PHOTOMETRIC DATA**

Visit [sistemalux.com](http://sistemalux.com) for complete photometric data.

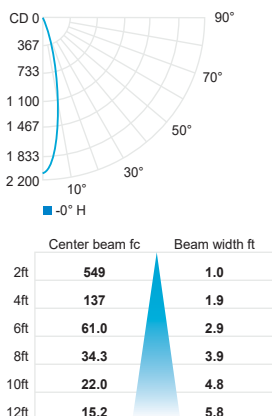
**ADJUSTABLE**



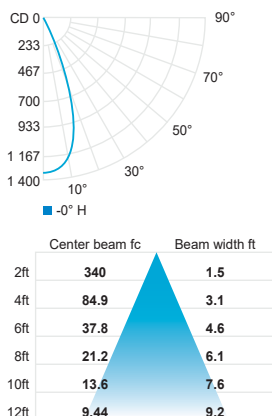
CCT (K)	CRI	OUTPUT	LOAD (W)	OPTIC	LUMENS (lm)	EFFICACY (lm / W)	MAX CANDELA (cd)	MODELS
3000K	90	BO	9.5W	Narrow flood 25°	470	49	1 595	B-930-ANF
				Flood 42°	510	53	990	B-930-AFL
		HO	13W	Narrow flood 25°	645	49	2 195	H-930-ANF
				Flood 42°	705	54	1 355	H-930-AFL

\*USE MULTIPLIER TABLE FOR OTHER CCT AND CRI OUTPUT DATA

HO narrow flood 25° (3000K, 90CRI)



HO flood 42° (3000K, 90CRI)



CCT options	2700K	3000K	3500K
CRI options	90CRI	90CRI	90CRI
<b>Multiplier</b>	<b>0.95</b>	<b>1</b>	<b>1.02</b>