

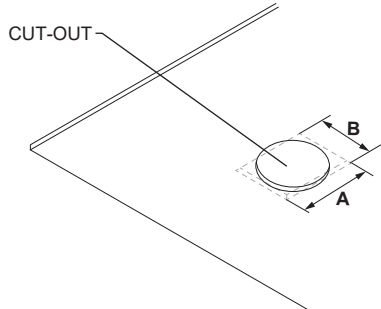
IMPORTANT - READ CAREFULLY BEFORE INSTALLING FIXTURE. RETAIN THESE INSTRUCTIONS FOR FUTURE REFERENCE.

THIS PRODUCT MUST BE INSTALLED IN ACCORDANCE WITH THE NATIONAL ELECTRICAL CODE AND ALL APPLICABLE LOCAL CODES, BY A PERSON FAMILIAR WITH THE CONSTRUCTION AND OPERATION OF THE PRODUCT, AND THE HAZARDS INVOLVED. PROPER GROUNDING IS REQUIRED FOR SAFETY.

REMODEL INSTALLATION (RF)

A- MAKE THE CUT-OUT OPENING (SEE DIMENSIONS BELOW).

[A]



| Model | | Trim kit | Cut-out dimensions | Clearance |
|-------|----|--------------|-----------------------|-------------|
| LOG3R | TR | - | Ø 2¾" (Ø 71mm) | 5½" (140mm) |
| | TL | TK-LOG3RL-RF | Ø 2⅞" (Ø 73mm) | 8" (203mm) |
| LOG3S | TR | - | 2⅝" x 2⅝" (69 x 69mm) | 5½" (140mm) |
| | TL | TK-LOG3SL-RF | 2¾" x 2¾" (71 x 71mm) | 8" (203mm) |

TRIM KIT INSTALLATION (RF)

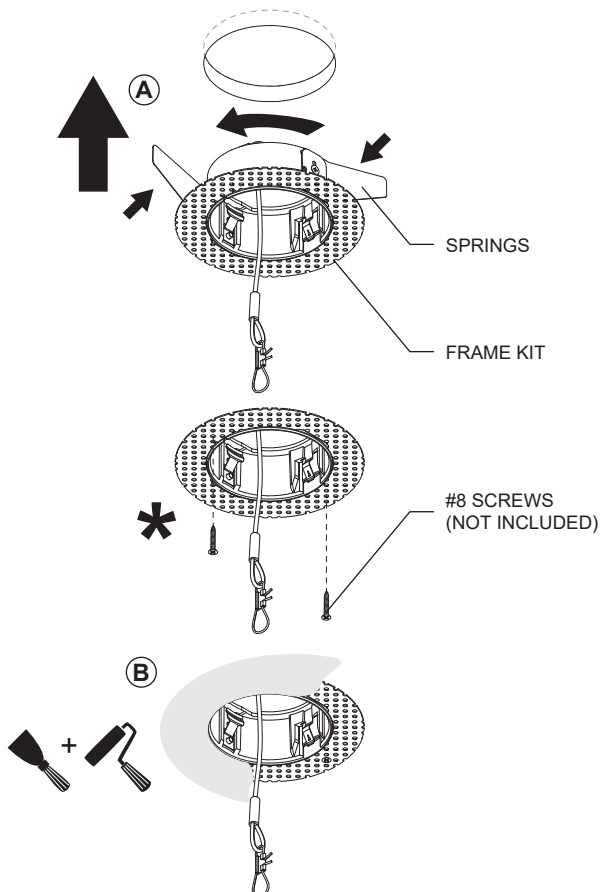
A- **ROUND MODEL**: BEND AND HOLD THE SPRINGS AGAINST THE TRIM KIT AND ROTATE IN THE SPECIFIED DIRECTION (SEE BELOW) WHILE PUSHING UPWARD TO INSERT THE TRIM KIT INTO THE CEILING.

*FOR A BETTER PLASTER WORK FINISH, SCREW THE TRIMLESS KIT TO THE CEILING USING (2) #8 SCREWS (NOT INCLUDED).

A- **SQUARE MODEL**: INSERT THE TRIM KIT INTO THE CEILING. TO HOLD THE KIT INSIDE THE HOUSING, SCREW THE (2) FIXATION BRACKET ADJUSTMENT SCREWS WITH A DRILL (RECOMMENDED). THE BRACKETS WILL OPEN AUTOMATICALLY WHILE SCREWING.

B- FINISH THE ASSEMBLY BY PLASTERING, SANDING AND PAINTING.

A + B ROUND MODEL



A + B SQUARE MODEL

