

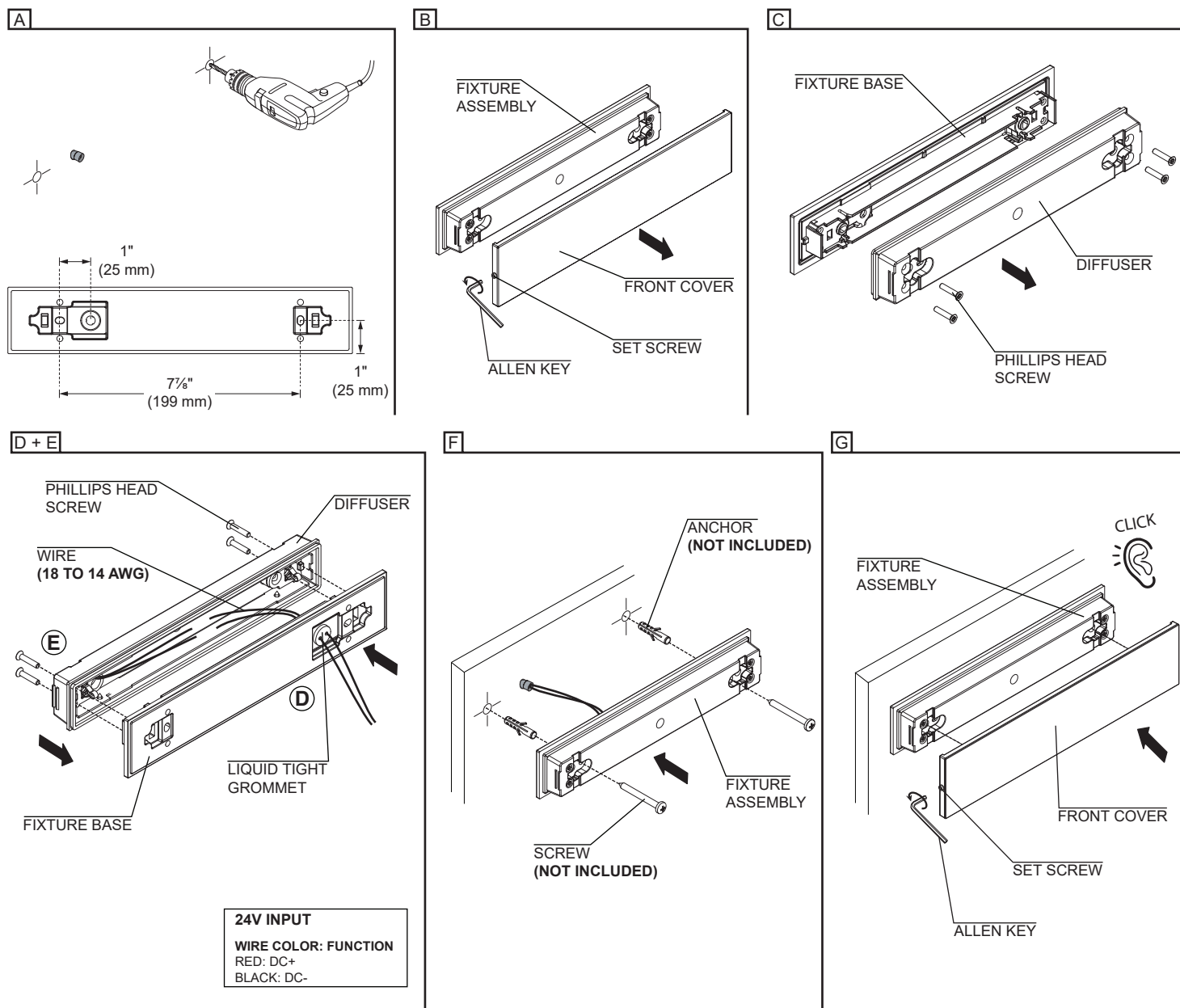
IMPORTANT - READ CAREFULLY BEFORE INSTALLING FIXTURE. RETAIN THESE INSTRUCTIONS FOR FUTURE REFERENCE.

THIS PRODUCT MUST BE INSTALLED IN ACCORDANCE WITH THE NATIONAL ELECTRICAL CODE AND ALL APPLICABLE LOCAL CODES, BY A PERSON FAMILIAR WITH THE CONSTRUCTION AND OPERATION OF THE PRODUCT, AND THE HAZARDS INVOLVED. PROPER GROUNDING IS REQUIRED FOR SAFETY.

⚠ DISCONNECT THE MAIN LINE BEFORE WIRING SECONDARY CONNECTORS.

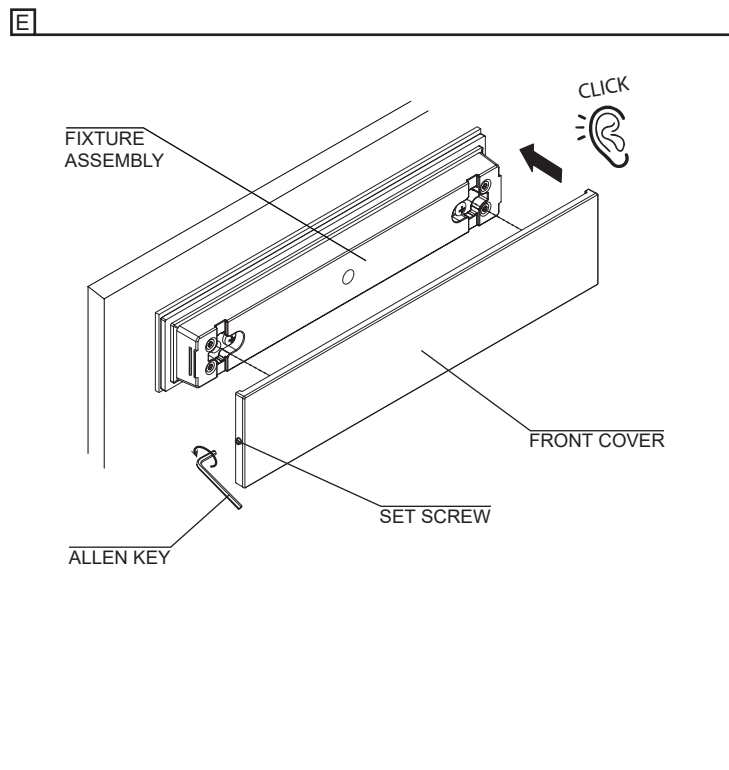
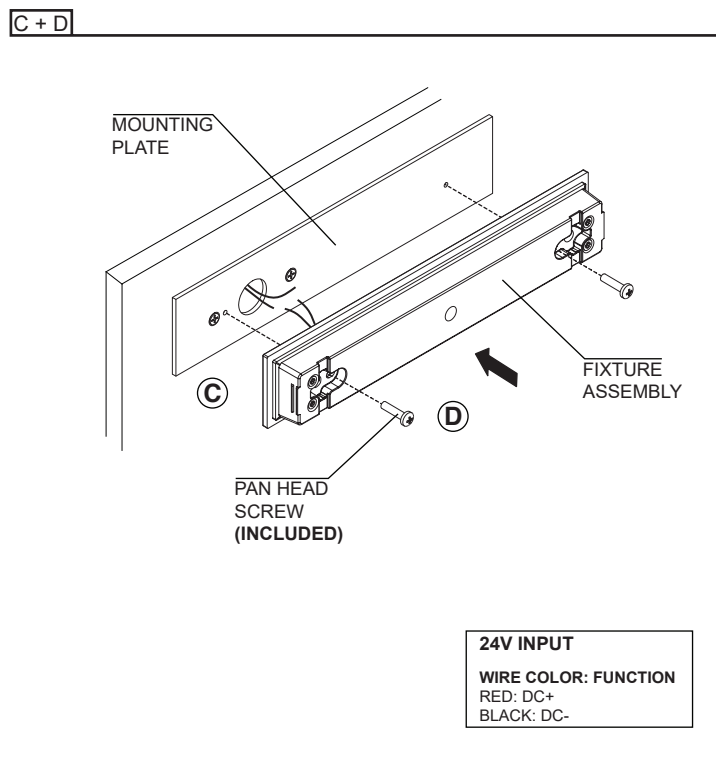
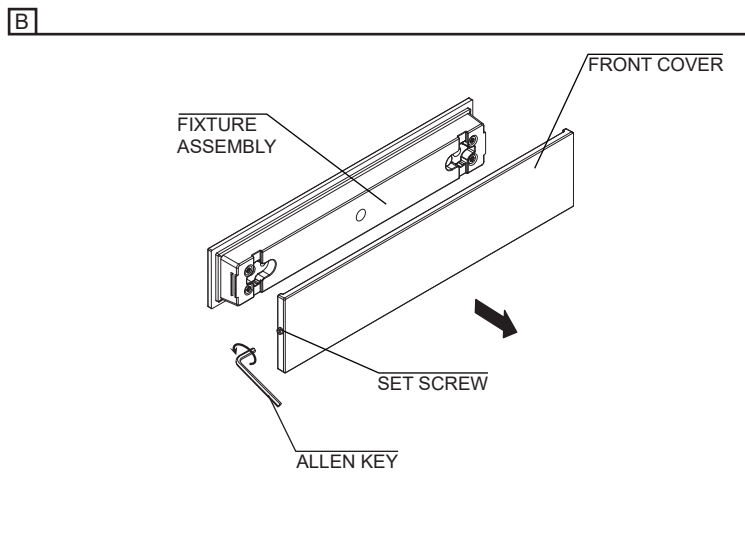
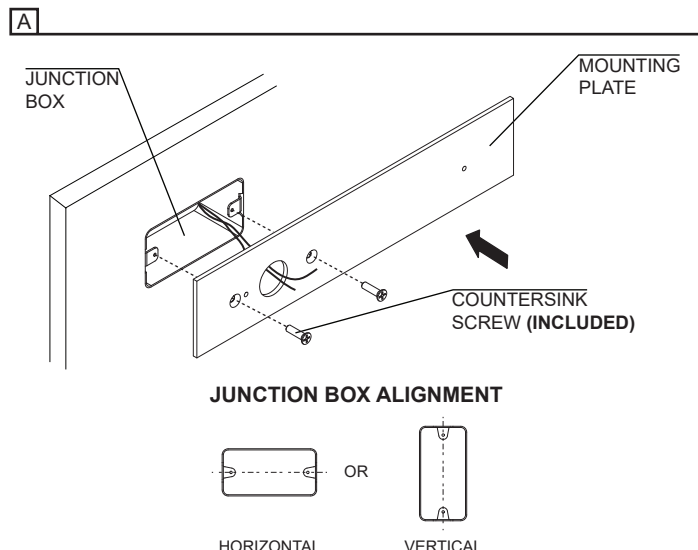
INSTALLATION WITH DIRECT FEED - REMOTE DRIVER (240 INPUT)

- PREPARE SURFACE FOR INSTALLATION USING DIMENSIONS BELOW.
- UNFASTEN THE (2) SET SCREWS WITH AN ALLEN KEY AND PULL THE FRONT COVER FROM THE FIXTURE ASSEMBLY.
DO NOT COMPLETELY REMOVE SCREWS.
- UNFASTEN THE (4) PHILLIPS HEAD SCREWS TO REMOVE THE DIFFUSER FROM THE FIXTURE BASE.
- FEED WIRE THROUGH THE LIQUID TIGHT GROMMET (**18 TO 14 AWG WIRE**) AND MAKE WIRE CONNECTIONS (**FOLLOWING POLARITY MARKING**).
- RE-INSTALL THE DIFFUSER ON THE FIXTURE BASE WITH (4) PHILLIPS HEAD SCREWS.
- INSTALL THE FIXTURE ASSEMBLY ON THE WALL USING (2) SCREWS AND APPROPRIATE ANCHORS (**BOTH NOT INCLUDED**).
- RE-INSTALL THE FRONT COVER ON THE FIXTURE ASSEMBLY UNTIL IT CLICKS IN PLACE AND FASTEN WITH THE SET SCREWS.
TO ADJUST THE LIGHT DISTRIBUTION, SEE INSTRUCTIONS ON PAGE 5.



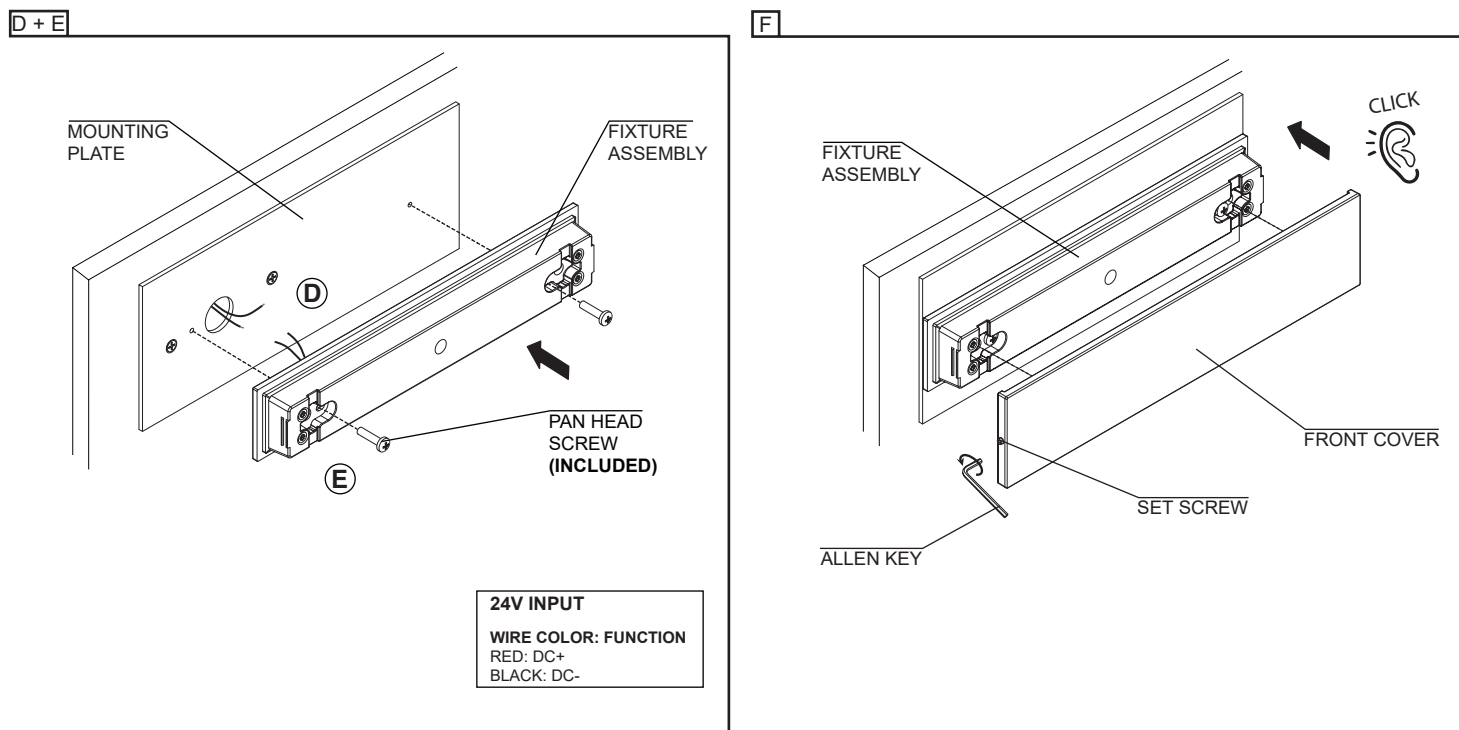
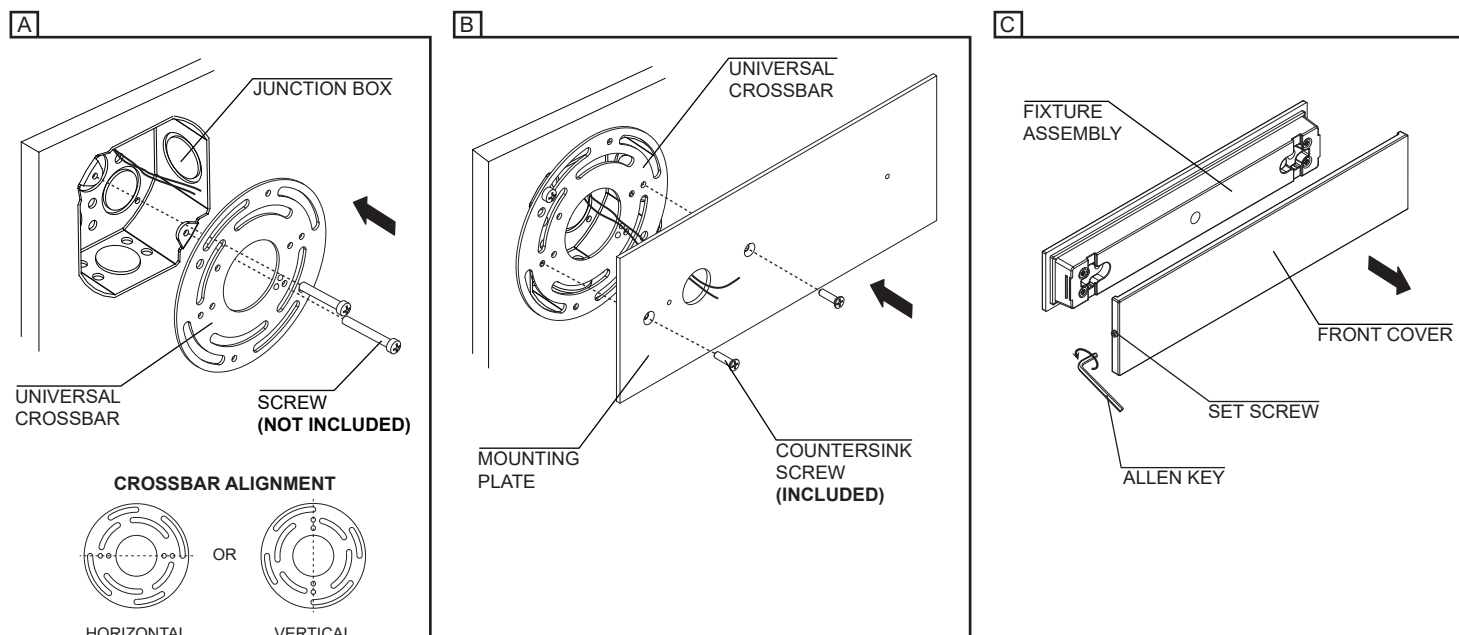
INSTALLATION WITH 2" JUNCTION BOX - REMOTE DRIVER (REM) (240 INPUT)

- A- INSTALL THE MOUNTING PLATE ON THE JUNCTION BOX USING (2) COUNTERSINK SCREWS (**INCLUDED**). FOLLOW ALIGNMENT DETAIL BELOW TO GET THE PROPER ORIENTATION.
- B- UNFASTEN THE SET SCREWS WITH AN ALLEN KEY AND PULL THE FRONT COVER FROM THE FIXTURE ASSEMBLY. DO NOT COMPLETELY REMOVE SCREWS.
- C- MAKE WIRE CONNECTIONS (**FOLLOWING POLARITY MARKING**).
- D- FASTEN FIXTURE ASSEMBLY TO THE MOUNTING PLATE USING (2) PAN HEAD SCREWS (**INCLUDED**).
- E- RE-INSTALL THE FRONT COVER ON THE FIXTURE ASSEMBLY UNTIL IT CLICKS IN PLACE AND FASTEN WITH THE SET SCREWS. TO ADJUST THE LIGHT DISTRIBUTION, SEE INSTRUCTIONS ON PAGE 5.



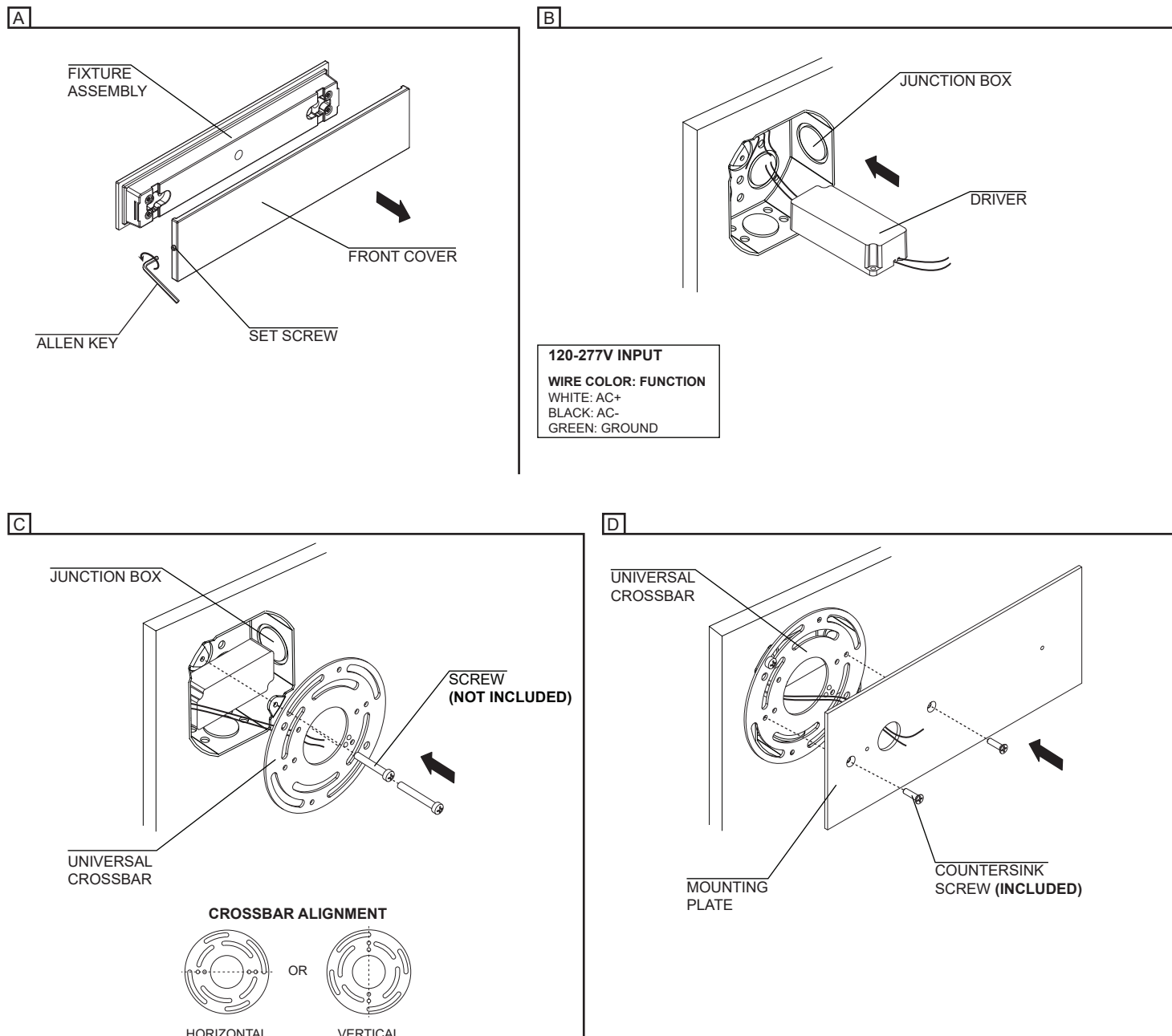
INSTALLATION WITH 4" JUNCTION BOX - REMOTE DRIVER (REM) (240 INPUT)

- A- FIX THE UNIVERSAL CROSSBAR TO THE JUNCTION BOX USING (2) SCREWS (**NOT INCLUDED**). FOLLOW ALIGNMENT DETAIL BELOW TO GET THE PROPER ORIENTATION.
- B- INSTALL THE MOUNTING PLATE ON THE UNIVERSAL CROSSBAR USING (2) COUNTERSINK SCREWS (**INCLUDED**).
- C- UNFASTEN THE (2) SET SCREWS WITH AN ALLEN KEY AND PULL THE FRONT COVER FROM THE FIXTURE ASSEMBLY. DO NOT COMPLETELY REMOVE SCREWS.
- D- MAKE WIRE CONNECTIONS (**FOLLOWING POLARITY MARKING**).
- E- FASTEN FIXTURE ASSEMBLY TO THE MOUNTING PLATE USING (2) PAN HEAD SCREWS (**INCLUDED**).
- F- RE-INSTALL THE FRONT COVER ON THE FIXTURE ASSEMBLY UNTIL IT CLICKS IN PLACE AND FASTEN WITH THE SET SCREWS. TO ADJUST THE LIGHT DISTRIBUTION, SEE INSTRUCTIONS ON PAGE 5.



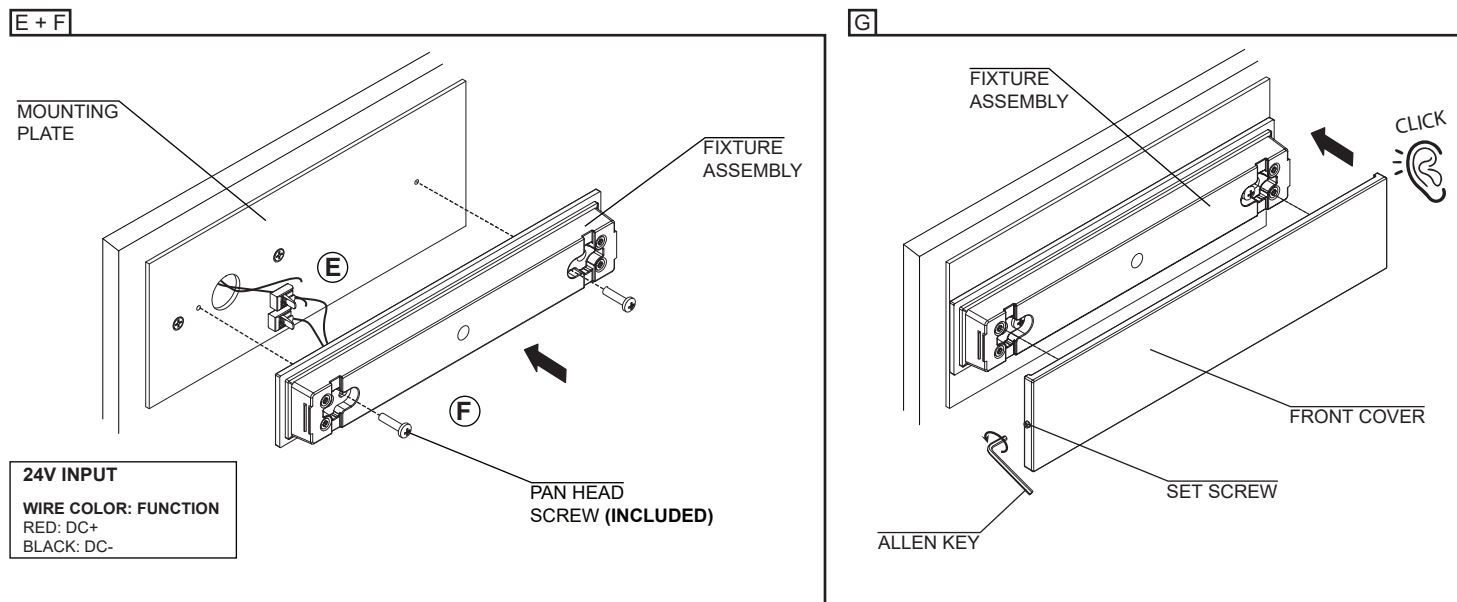
INSTALLATION WITH 4" JUNCTION BOX - REMOTE DRIVER (REM) (240 INPUT)

- A- UNFASTEN THE (2) SET SCREWS WITH AN ALLEN KEY AND PULL THE FRONT COVER FROM THE FIXTURE ASSEMBLY.
DO NOT COMPLETELY REMOVE SCREWS.
- B- MAKE BRANCH CIRCUIT CONNECTIONS AND PLACE THE DRIVER IN THE JUNCTION BOX.
- C- FIX THE UNIVERSAL CROSSBAR TO THE JUNCTION BOX USING (2) SCREWS (**NOT INCLUDED**). FOLLOW ALIGNMENT DETAIL BELOW TO GET THE PROPER ORIENTATION.
- D- INSTALL THE MOUNTING PLATE ON THE UNIVERSAL CROSSBAR USING (2) COUNTERSINK SCREWS (**INCLUDED**).



INSTALLATION WITH 4" JUNCTION BOX - REMOTE DRIVER (REM) (240 INPUT)

- A- TO MAKE THE CONNECTIONS, PULL THE LEVERS UP THEN INSERT WIRES IN THE CONNECTORS (FOLLOWING POLARITY MARKING) AND PUSH THE LEVERS DOWN.
- B- FASTEN FIXTURE ASSEMBLY TO THE MOUNTING PLATE USING (2) PAN HEAD SCREWS (INCLUDED).
- C- RE-INSTALL THE FRONT COVER ON THE FIXTURE ASSEMBLY UNTIL IT CLICKS IN PLACE AND FASTEN WITH THE SET SCREWS.
- TO ADJUST THE LIGHT DISTRIBUTION, SEE INSTRUCTIONS BELOW.



LIGHT DISTRIBUTION ADJUSTMENT

- A- SELECT THE RIGHT HOLES ACCORDING TO THE DESIRED LIGHT DISTRIBUTION, AS SHOWN BELOW.
- USE A WRENCH TO REMOVE AND FASTEN THE (2) BALLSTUDS IN THE FRONT COVER.

