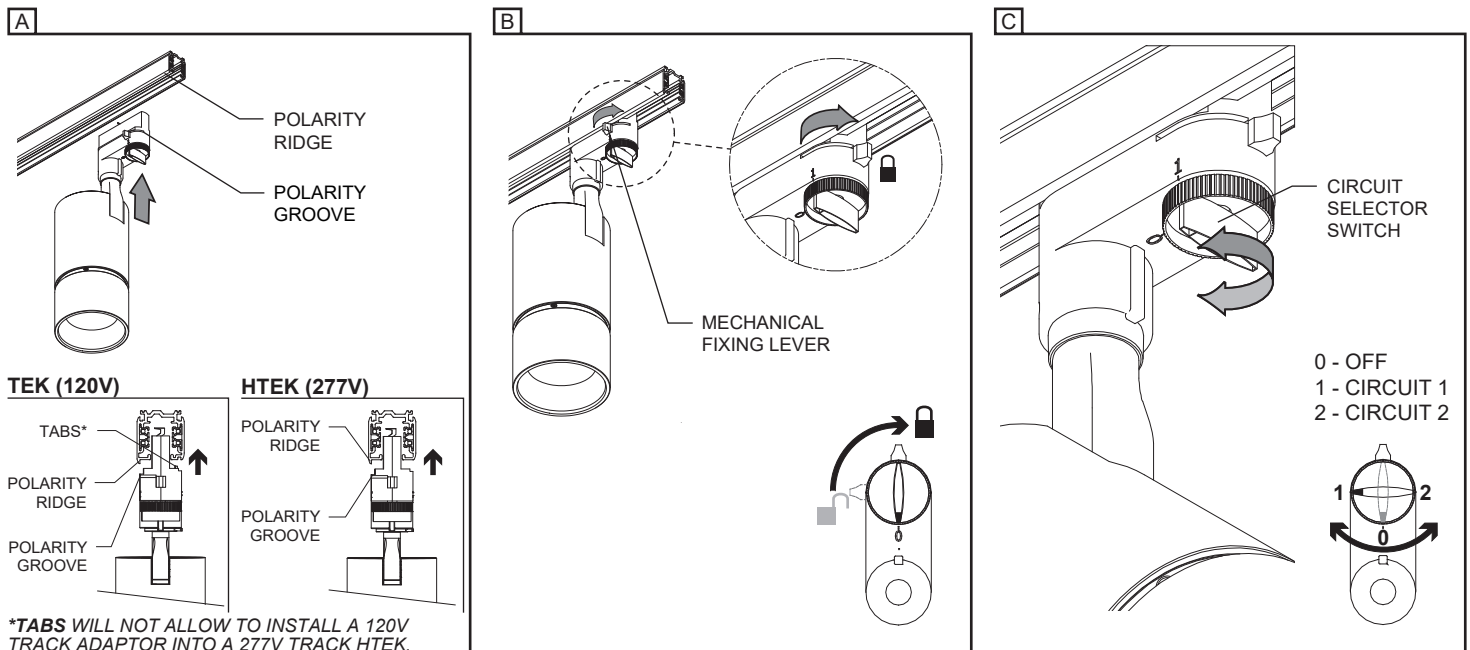


IMPORTANT - READ CAREFULLY BEFORE INSTALLING FIXTURE. RETAIN THESE INSTRUCTIONS FOR FUTURE REFERENCE.
THIS PRODUCT MUST BE INSTALLED IN ACCORDANCE WITH THE NATIONAL ELECTRICAL CODE AND ALL APPLICABLE LOCAL CODES, BY A PERSON FAMILIAR WITH THE CONSTRUCTION AND OPERATION OF THE PRODUCT, AND THE HAZARDS INVOLVED. PROPER GROUNDING IS REQUIRED FOR SAFETY.

INSTALLING PROJECTOR ON TWO CIRCUIT TRACK (120V OR 277V)

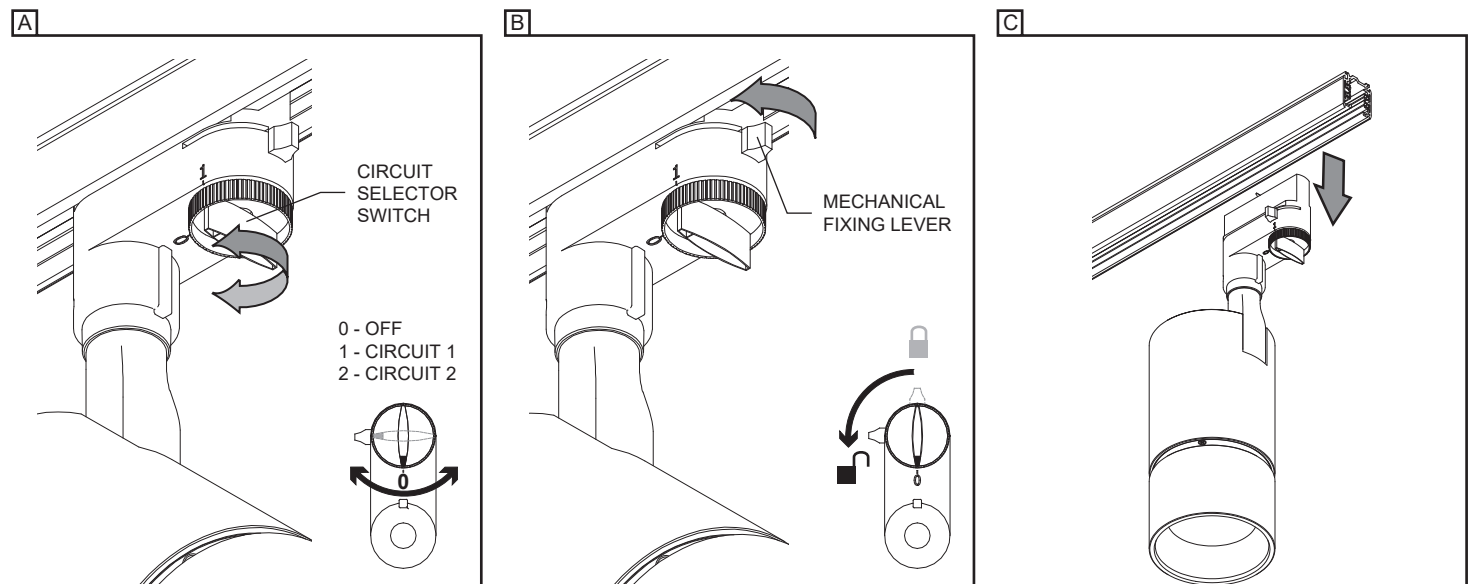
FOR USE WITH **TEK SERIES** (120V) TRACK SYSTEM - OR **HTEK SERIES** (277V) TRACK SYSTEM ONLY.

- A- INSERT THE PROJECTOR TRACK ADAPTOR WITH THE POLARITY GROOVE TOWARDS THE POLARITY RIDGE ON THE TRACK AND PUSH INTO THE TRACK UNTIL IT SNAPS INTO PLACE.
B- TURN THE MECHANICAL FIXING LEVER TO LOCK THE PROJECTOR INTO THE TRACK.
C- SELECT THE DESIRED CIRCUIT WITH THE CIRCUIT SELECTOR SWITCH.



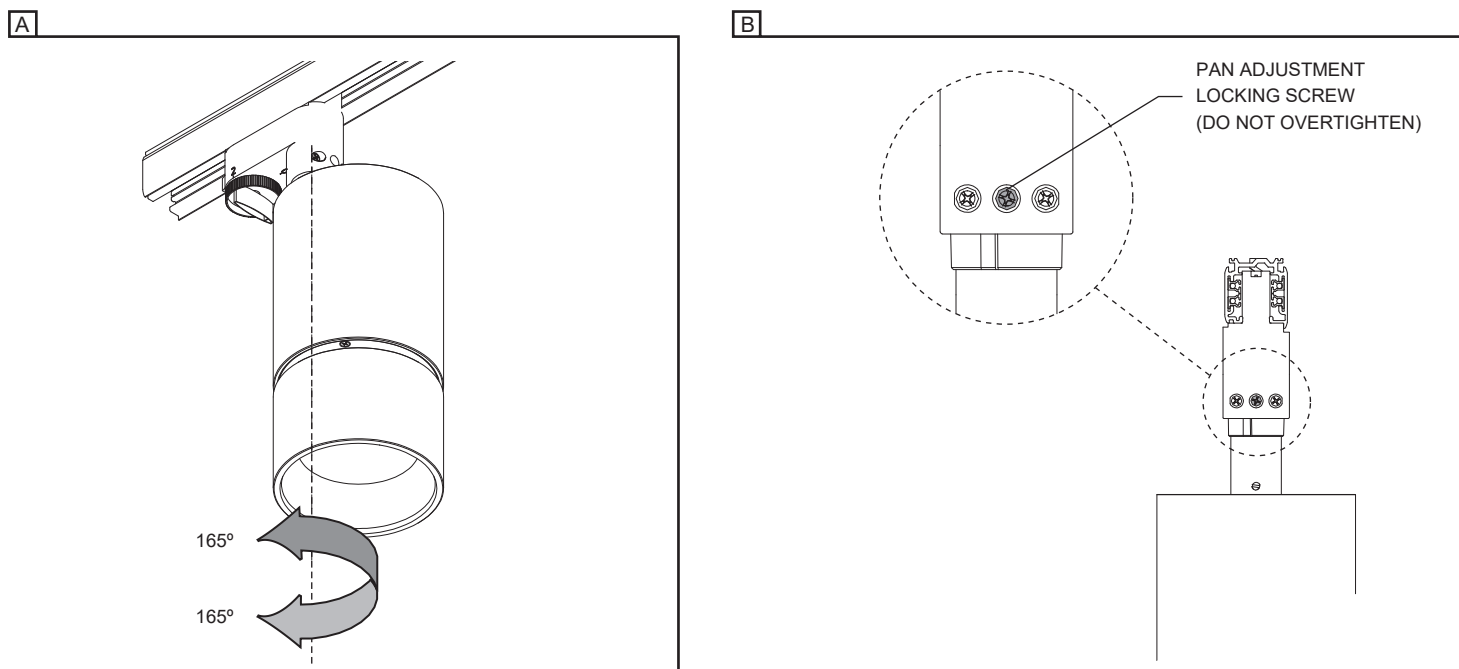
REMOVING PROJECTOR FROM TRACK TEK / HTEK (1780)

- A- TO REMOVE THE PROJECTOR FROM TRACK, SELECT 0-POSITION (**OFF**) ON THE CIRCUIT SELECTOR SWITCH.
B- TURN THE MECHANICAL FIXING LEVER AS SHOWN TO **UNLOCK** THE PROJECTOR FROM THE TRACK.
C- PULL FIRST FROM THE FIXING LEVER END TO REMOVE THE PROJECTOR FROM THE TRACK.



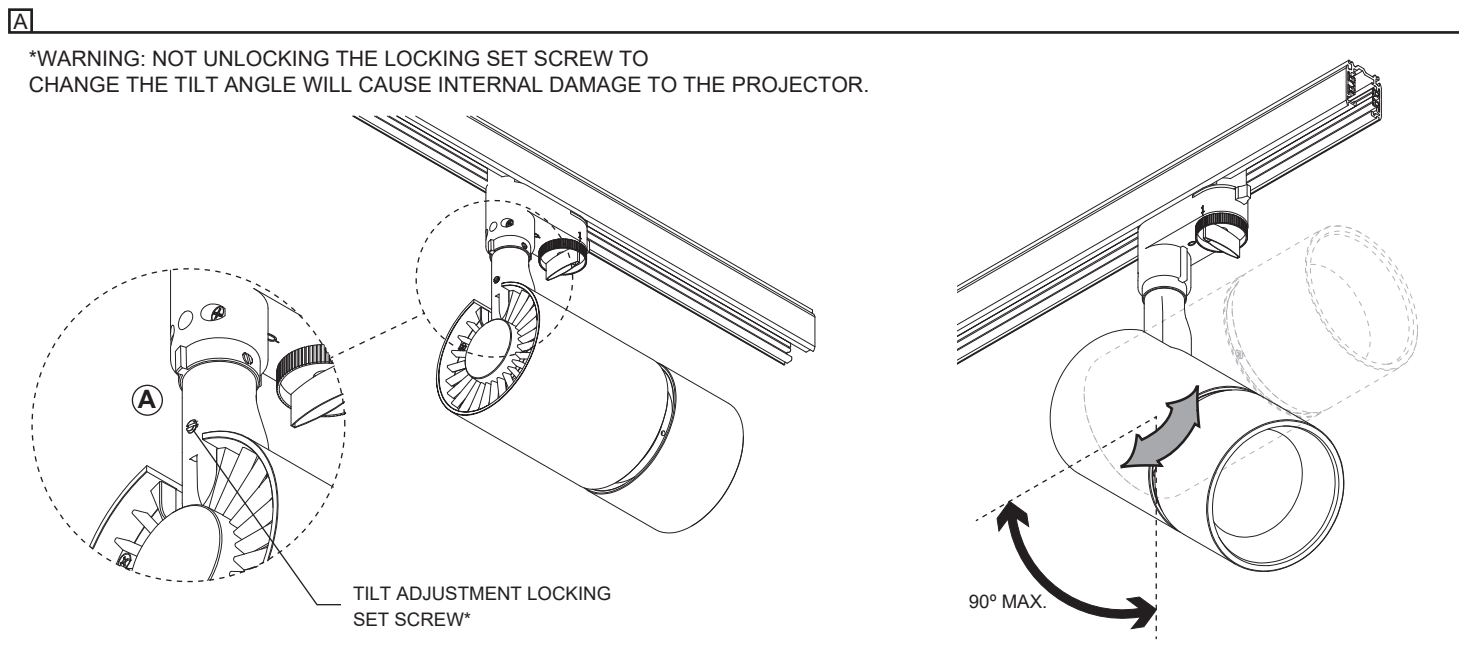
PAN ANGLE POSITION (1780)

- A- ADJUST THE DESIRED PAN POSITION. (MAXIMUM OF 330° AXIAL ROTATION).
B- LOCK THE POSITION WITH THE PAN ADJUSTMENT LOCKING SCREW.



TILT ANGLE POSITION (1780)

- A- ADJUST THE DESIRED POSITION AND LOCK WITH THE LOCKING SET SCREW USING A SLOT SCREW DRIVER.
(MAXIMUM OF 90° AXIAL ROTATION)

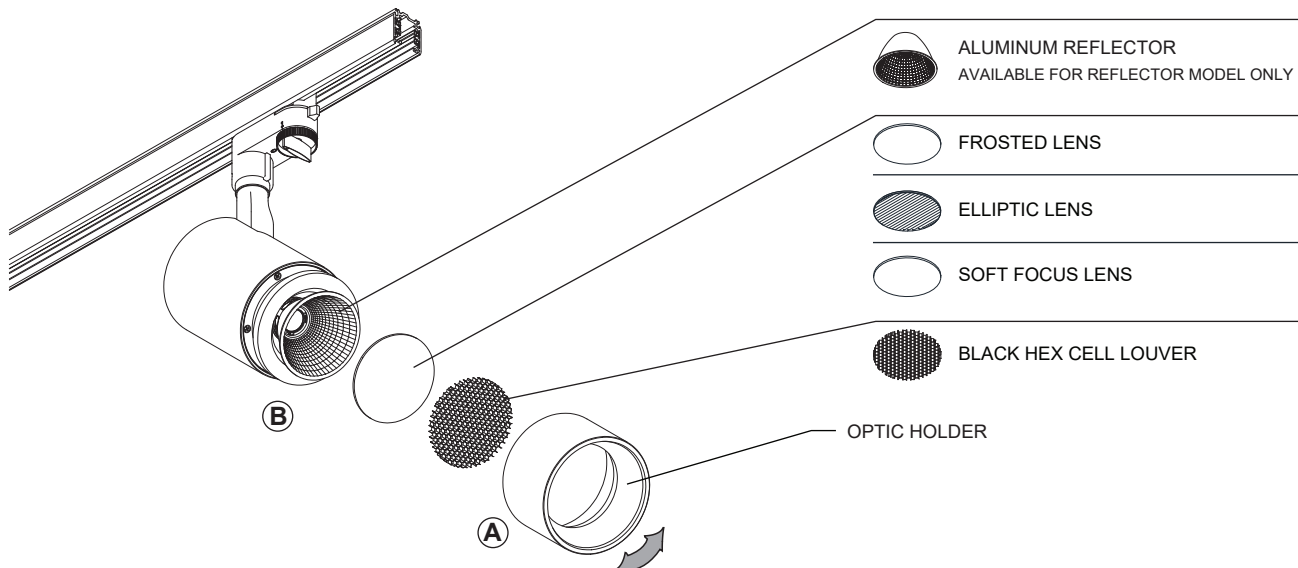


REPLACING OPTIC FOR REFLECTOR MODELS

A- UNSCREW THE OPTIC HOLDER TO ACCESS THE REFLECTOR.

B- REPLACE THE REFLECTOR AND RE-INSTALL THE OPTIC HOLDER BACK IN PLACE.

A + B



ACCESSORIES

A- UNSCREW THE OPTIC HOLDER

B- PLACE ACCESSORY BETWEEN THE OPTIC HOLDER AND THE ACCESSORY HOLDER

C- RE-INSTALL THE OPTIC HOLDER BACK IN PLACE.

A + B + C

