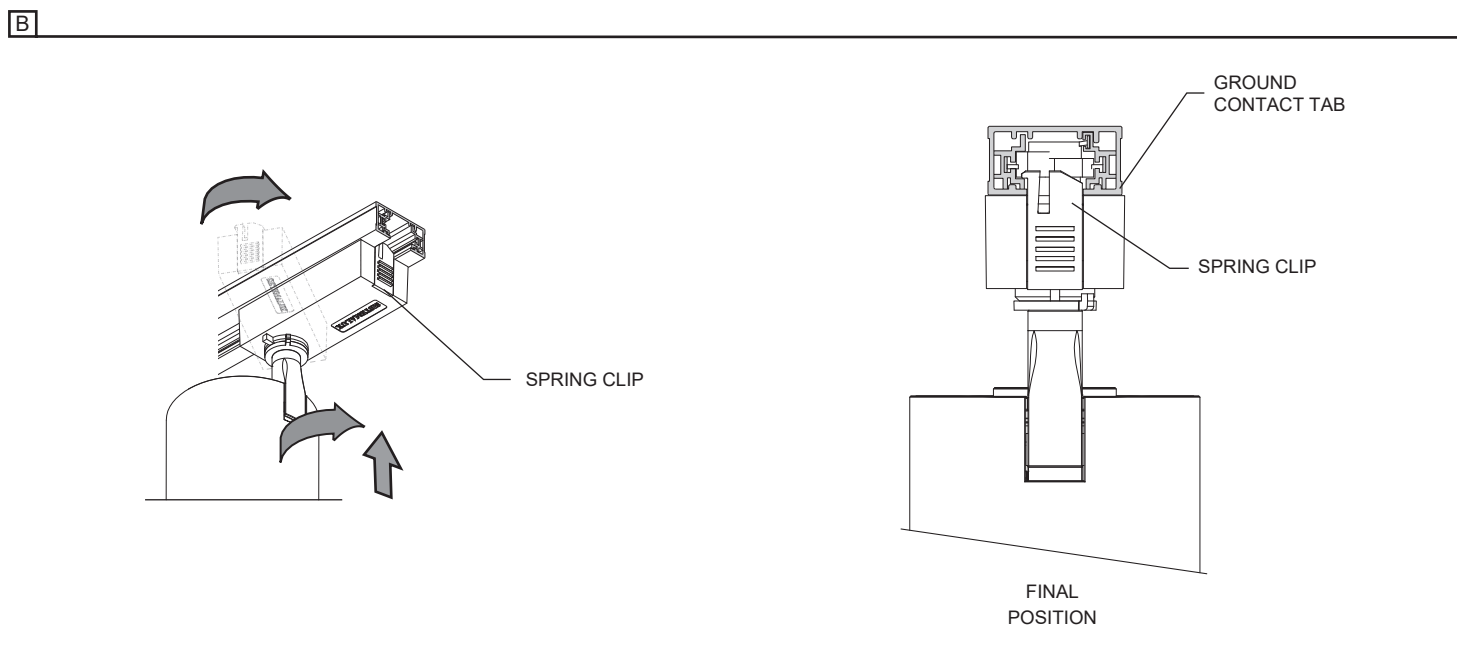
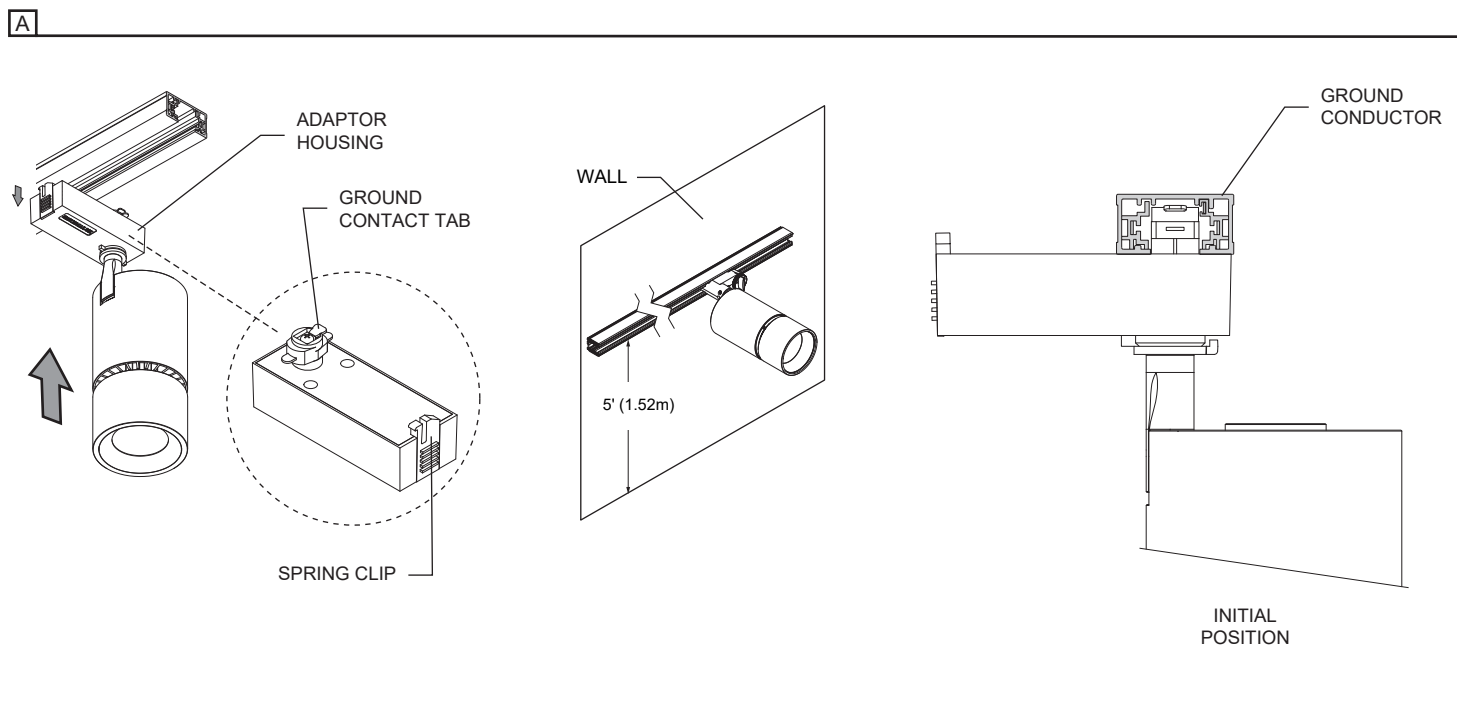


IMPORTANT - READ CAREFULLY BEFORE INSTALLING FIXTURE. RETAIN THESE INSTRUCTIONS FOR FUTURE REFERENCE.
THIS PRODUCT MUST BE INSTALLED IN ACCORDANCE WITH THE NATIONAL ELECTRICAL CODE AND ALL APPLICABLE LOCAL CODES, BY A PERSON FAMILIAR WITH THE CONSTRUCTION AND OPERATION OF THE PRODUCT, AND THE HAZARDS INVOLVED. PROPER GROUNDING IS REQUIRED FOR SAFETY.

INSTALLING PROJECTOR ON ONE CIRCUIT TRACK (120V)

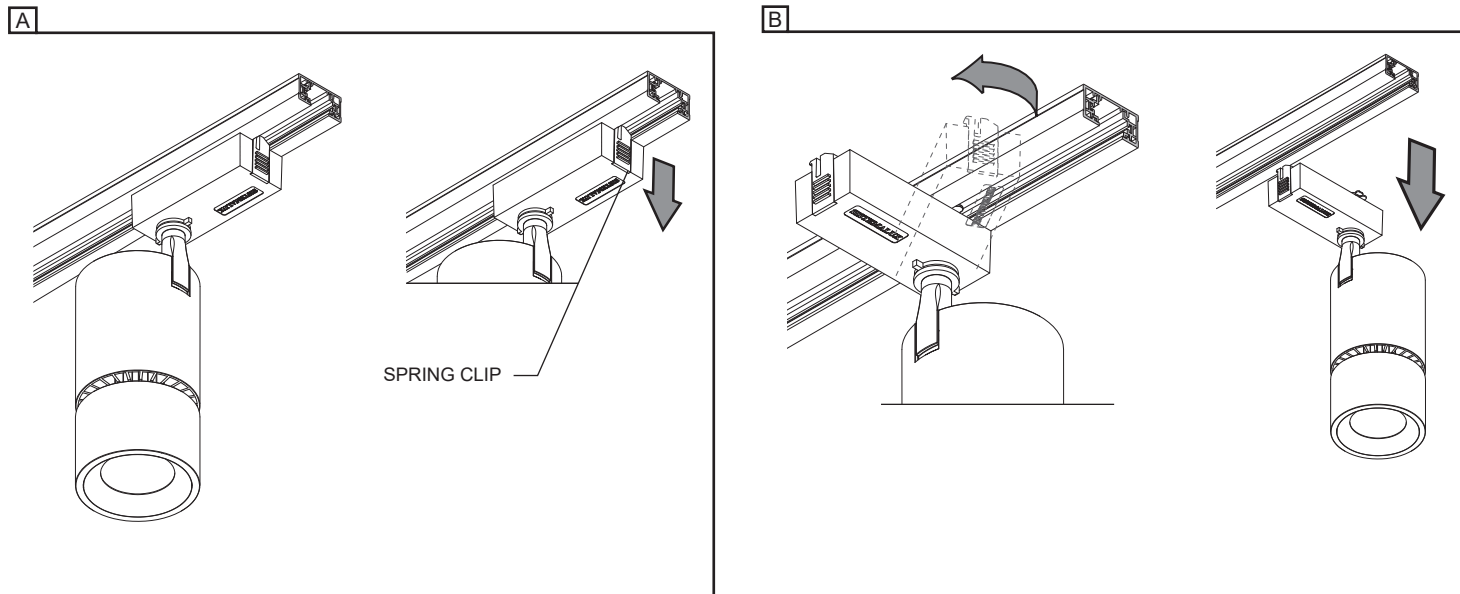
FOR USE WITH **SISTEMALUX 8000 SERIES, OR SISTEMALUX 8000-S1 SERIES** TRACK SYSTEM ONLY (120V).

- A - INSERT THE TRACK ADAPTOR IN THE TRACK RESPECTING THE SAME DIRECTION AS SHOWN BELOW.
B - LOCATE THE GROUND CONDUCTOR OF THE TRACK. PUSH THE ADAPTOR INTO TRACK AND ROTATE THE TRACK ADAPTOR A QUARTER TURN IN THE PROPER DIRECTION IN ORDER TO MAKE CONTACT WITH THE GROUND CONTACT TAB OF THE TRACK ADAPTOR. SPRING CLIP HAVE TO BE IN THE TRACK SLOT FOR FINAL POSITION.



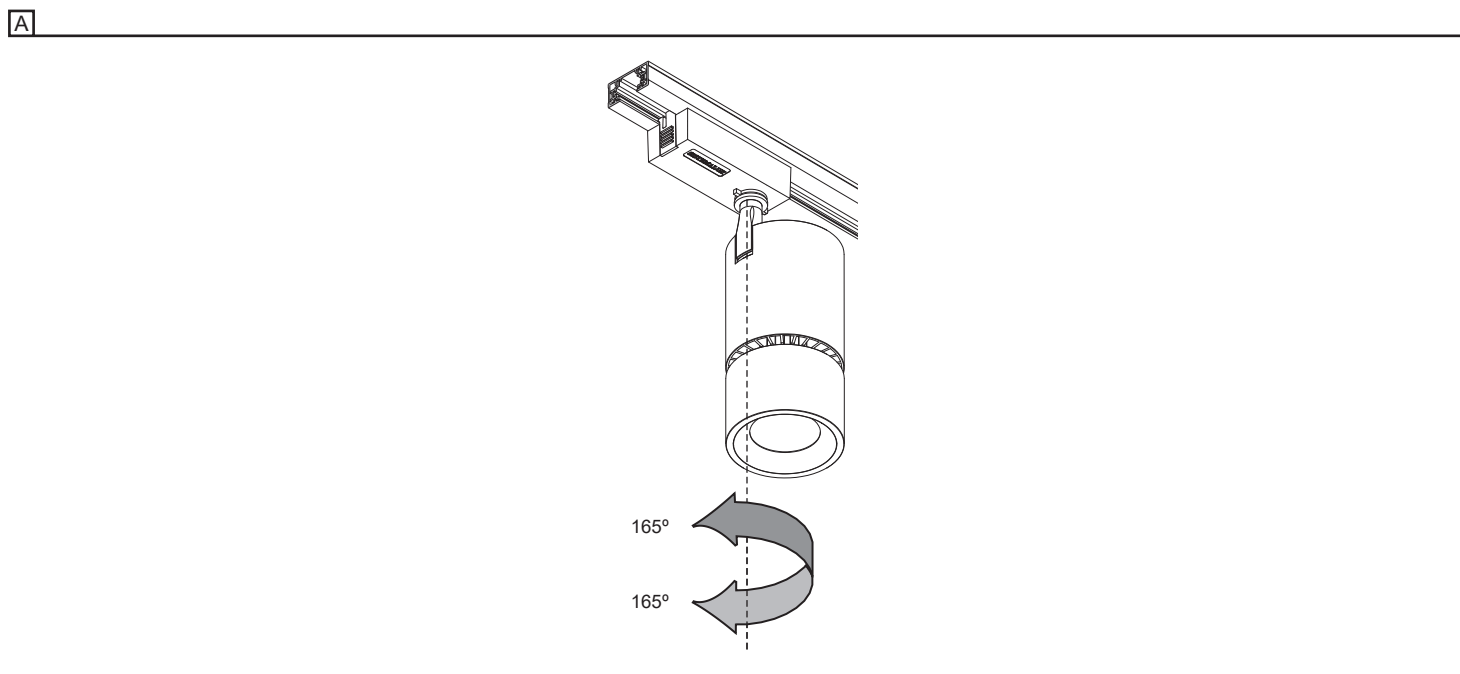
REMOVING PROJECTOR FROM ONE CIRCUIT TRACK (1770W)

- A - TO REMOVE THE PROJECTOR FROM THE TRACK, PULL THE SPRING CLIP UNTIL THE CLIP IS OUTSIDE THE TRACK SLOT
B - WHILE PULLING THE SPRING CLIP, ROTATE A QUARTER TURN IN ANY DIRECTION AND PULL THE PROJECTOR TO REMOVE IT FROM THE TRACK.



PAN ANGLE POSITION (1770W)

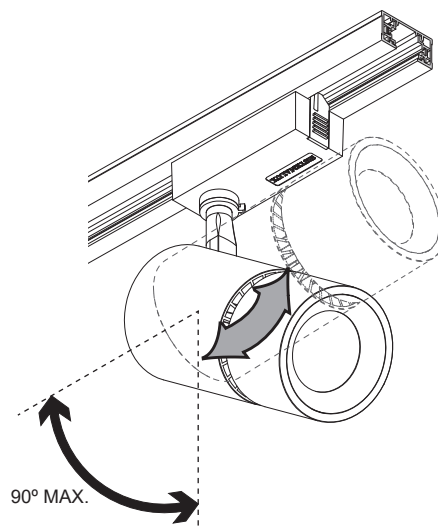
- A - ROTATE THE FIXTURE TO DESIRED PAN POSITION (MAXIMUM OF 330° AXIAL ROTATION).



TILT ANGLE POSITION (1770W)

A - ROTATE THE FIXTURE TO DESIRED TILT POSITION (MAXIMUM OF 90° AXIAL ROTATION).

A

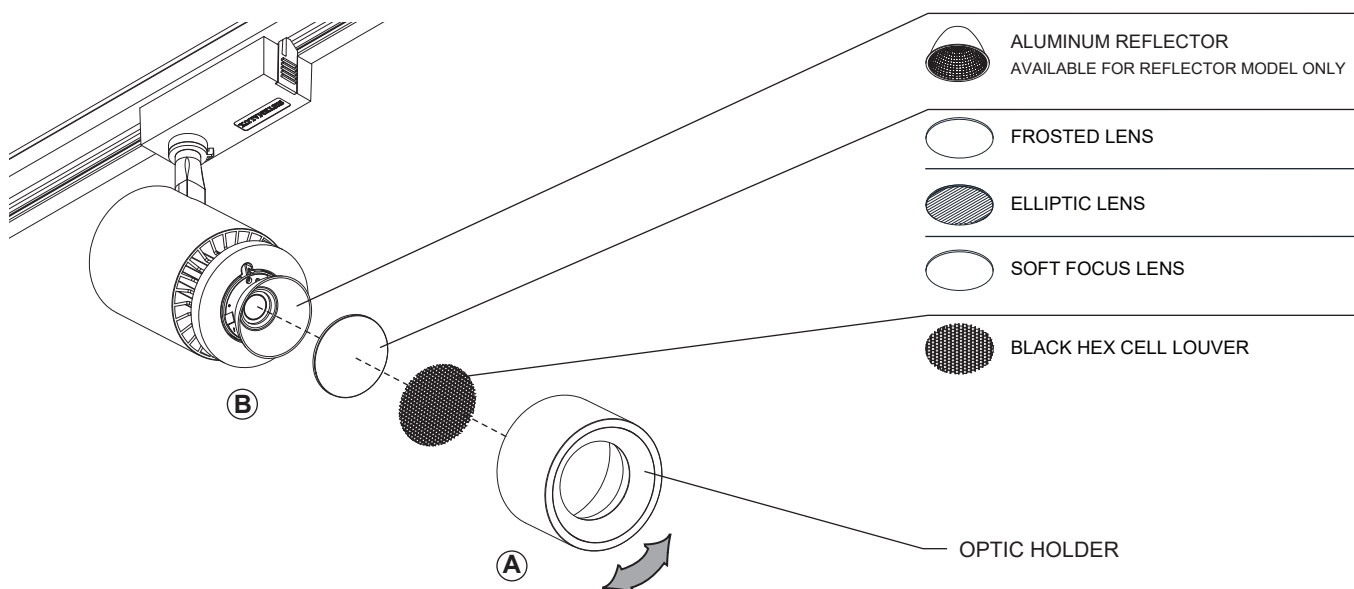


REPLACING OPTIC FOR REFLECTOR MODELS

A - UNSCREW THE OPTIC HOLDER TO ACCESS THE REFLECTOR.

B - REPLACE THE REFLECTOR AND RE-INSTALL THE OPTIC HOLDER BACK IN PLACE.

A + B



ACCESSORIES

A - UNSCREW THE OPTIC HOLDER

B - PLACE ACCESSORY BETWEEN THE OPTIC HOLDER AND THE ACCESSORY HOLDER

C - RE-INSTALL THE OPTIC HOLDER BACK IN PLACE.

A + B + C

